

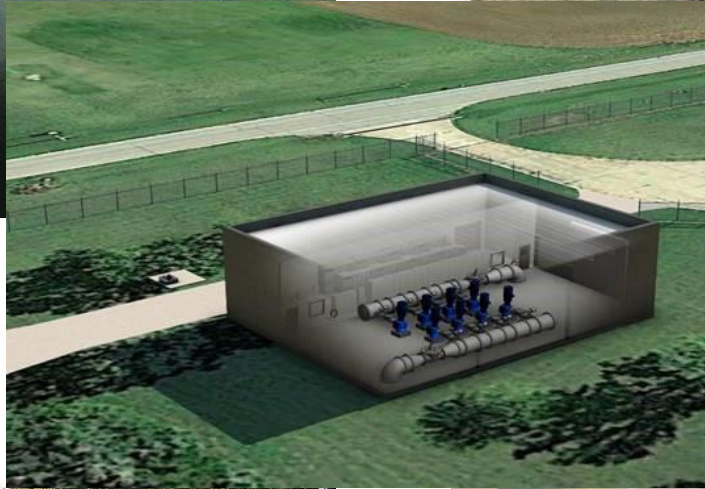
City of Enid



Agenda

- Program Overview
- Phase 2 Scope
- Phase 2 Status
- Phase 2 Schedule
- Key Decisions

Program Overview



Phase 2 Program Scope

Prepare 30%
Design

Update Cost
Opinion
Capital and O&M

Develop
Phasing Plan
(if necessary)

Program Status Update

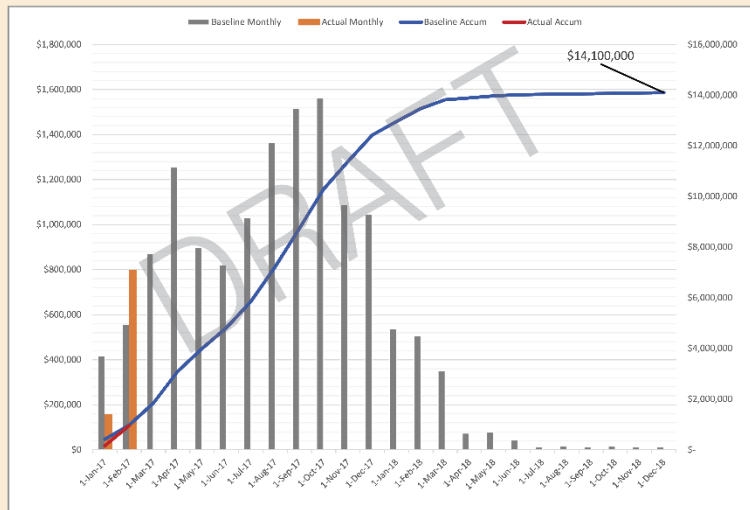
- Good progress on all major infrastructure pieces
- Continuing the Environmental (NEPA) process with USACE
 - 4/11/17 6 pm Public Meeting #1, Enid
 - 4/13/17 6 pm Public Meeting #2, Ponca City
- Finalizing master schedule, program controls, and reporting

Monthly Progress Report



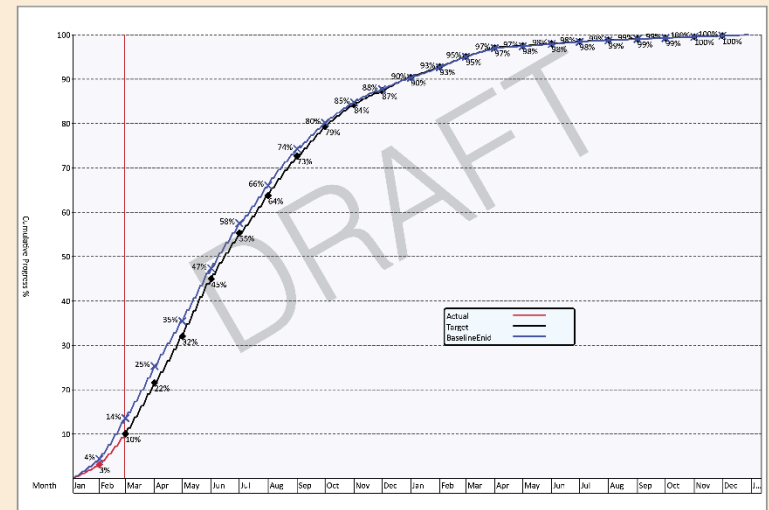
Program Finance - Phase 2

Kaw Lake Water Supply Program CashFlow



Program Schedule - Phase 2

Kaw Lake Water Supply Program - March 2017





Intake and Pump Stations

Scope of Services

The scope of services includes surveying, geotechnical investigations, preliminary (30% Complete) design, investigation of property acquisition and development of design consultant standards for a new raw water intake and pumping station located on Kaw Lake at Intake Site No. 2 and an intermediate booster pump station as identified in Phase 1 of the project.

The intake will be a caisson and micro tunnel construction and three vertical turbine pumps in a parallel configuration with an 18.5 million gallons per day design capacity. The intermediate booster pump station will consist of four parallel horizontal split case pumps housed in an on-grade structure with an 18.5 million gallons per day design capacity. The intermediate booster pump station will also include a 5 million gallon ground storage tank.



Project Update

Surveys were performed in the field to establish boundary and topo. The project team is beginning to coordinate the geotechnical investigation work for the intake property. Garver is doing initial work on the draft preliminary design report document.



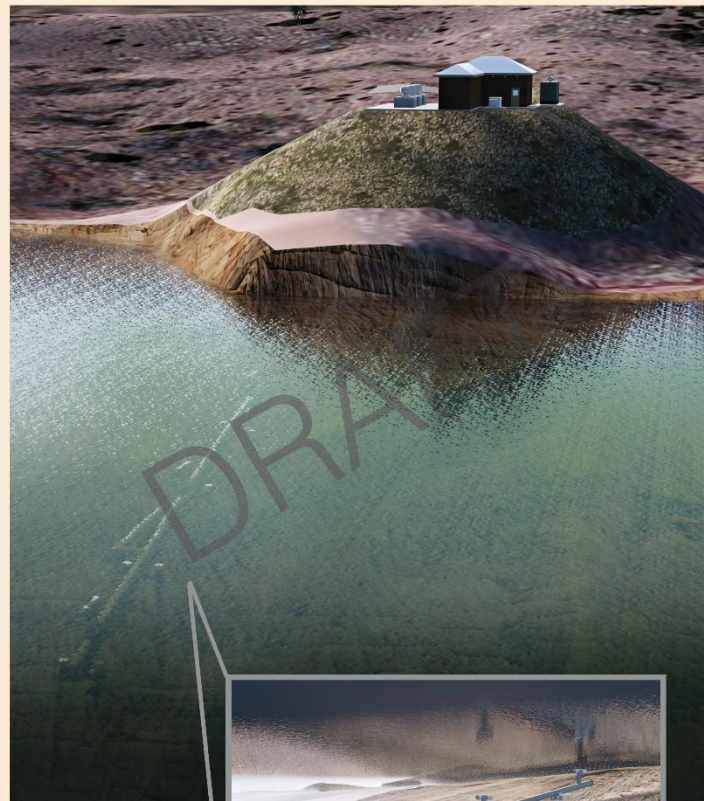
Completed

- Developed proposed survey boundary
- Survey team reviewed boundary survey
- Developed proposed geotechnical boring locations for intake property
- Environmental team reviewed proposed boring locations



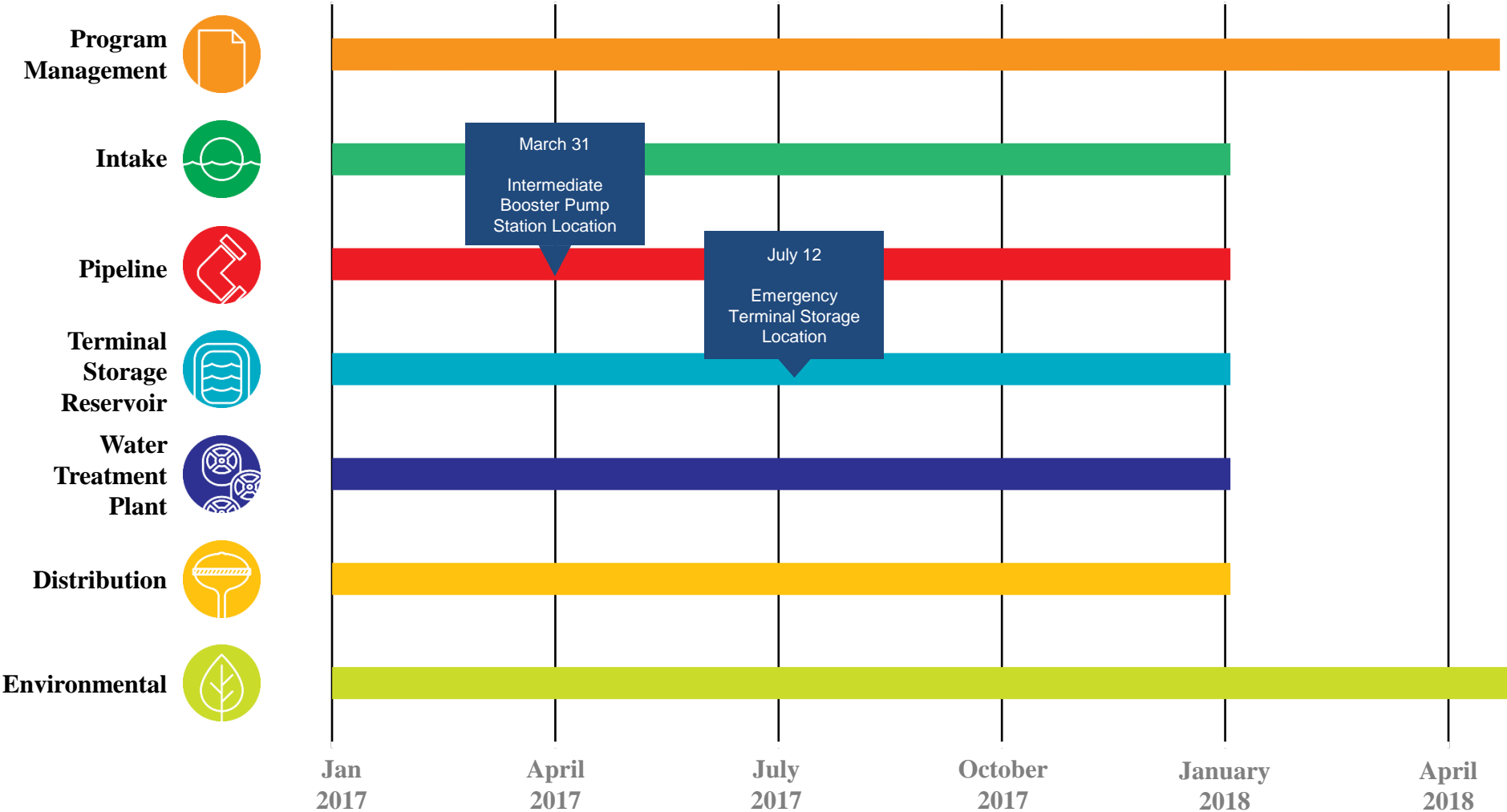
Future Activities

- Process and instrumentation diagrams (P&IDs)
- Continue work on draft preliminary design report
- Coordination of incoming power supply with local electric utility company
- Complete transient analysis for the conveyance infrastructure between Kaw Lake and the terminal storage reservoir

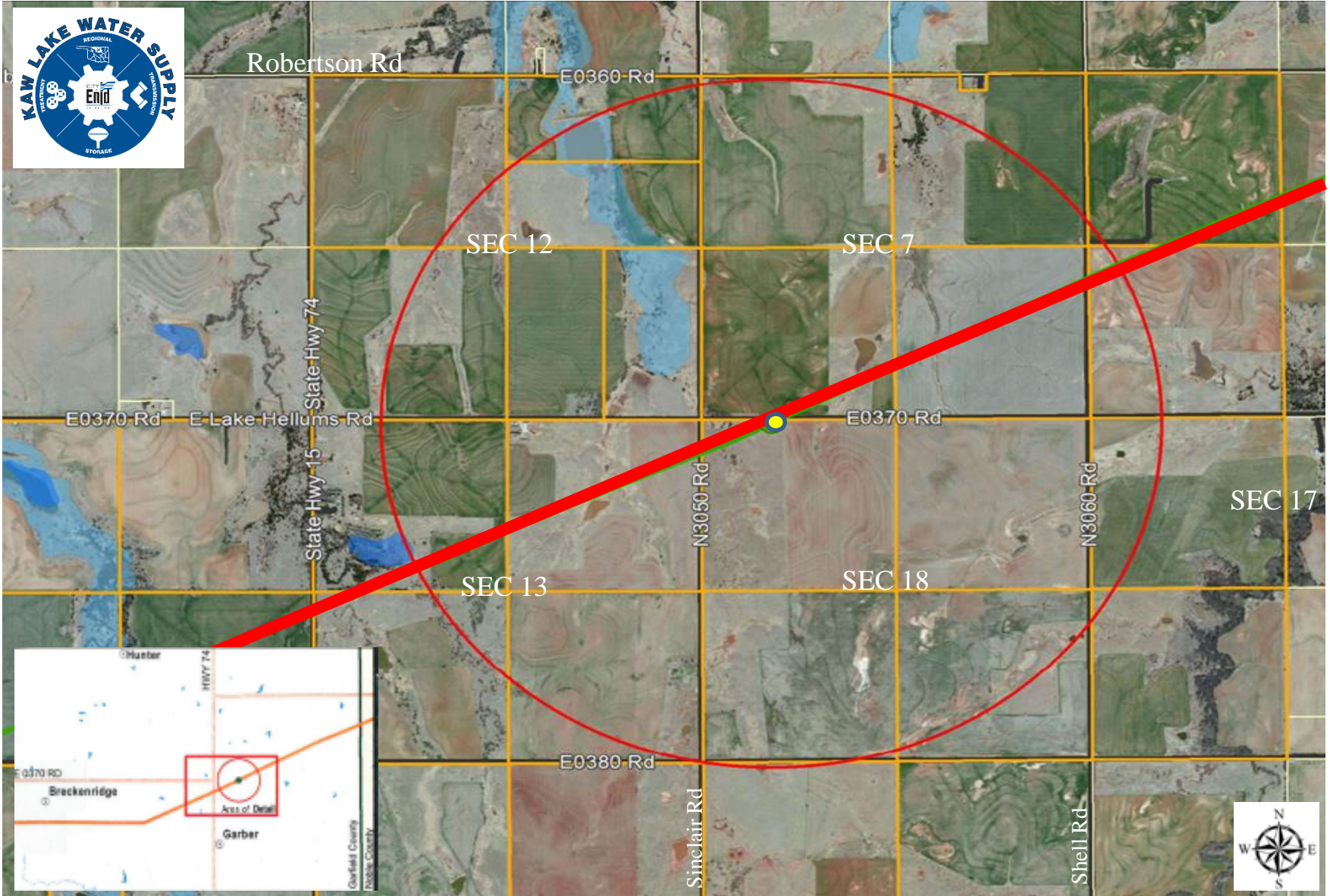


Preliminary Phase 2 Schedule

Integrated Program Planning Schedule



Proposed Intermediate Booster Pump Station Location



Proposed Emergency Terminal Storage Location

