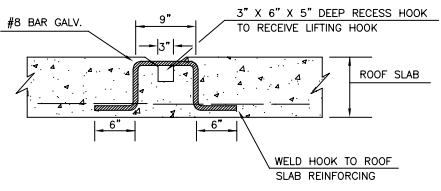
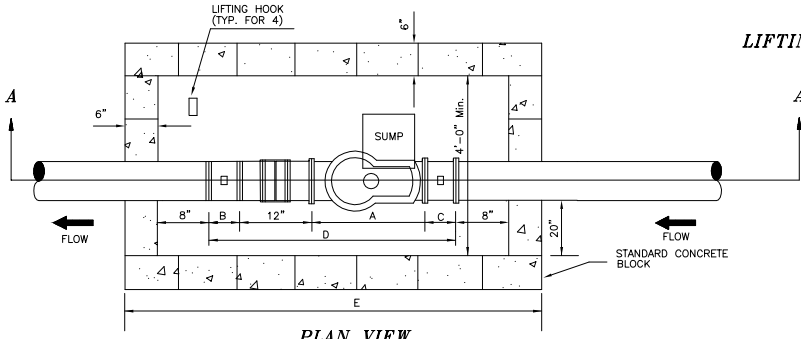


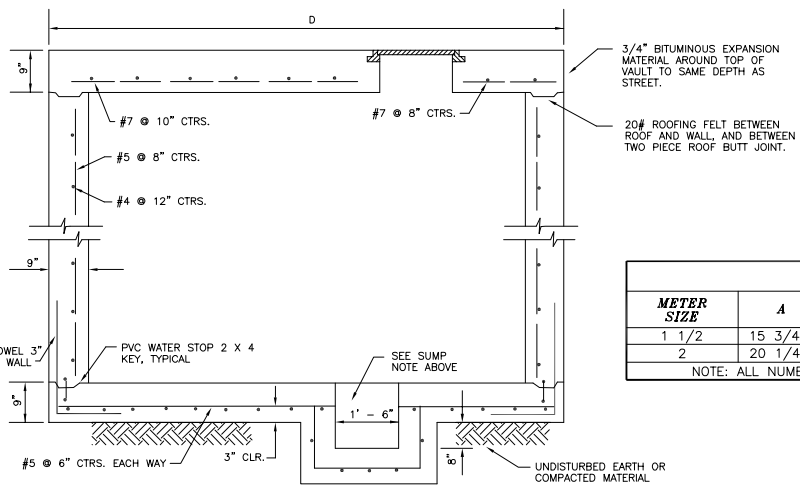
**ELEVATION VIEW SECTION AA  
OFFSTREET VALVE VAULT TOP**  
(NOT FOR TRAFFIC LOADS)  
NOT TO SCALE



**LIFTING HOOK DETAIL**  
NOT TO SCALE



**PLAN VIEW**  
NOT TO SCALE



**ELEVATION VIEW ALTERNATE VALVE  
VAULT FOR TRAFFIC LOADS**  
NOT TO SCALE

LEGEND					
METER SIZE	A	B	C	D	E
1 1/2	15 3/4	4 5/8	4 3/4	37 1/8	65 1/8
2	20 1/4	5 1/2	5 1/2	43 1/4	71 1/4

NOTE: ALL NUMBERS IN INCHES.

**NOTES:**

- USE DUCTILE IRON PIPING AND D.I./C.I. FITTINGS FROM THE MAIN LINE TAPPING SLEEVE TO DOWNSTREAM FROM THE METER CHECK VALVE AT THE CONNECTING SLEEVE.
- INSPECTION. NOTICE SHALL BE GIVEN TO THE ENGINEER 48 HOURS IN ADVANCE SO THAT AN INSPECTOR MAY WITNESS EACH OF THE FOLLOWING: 1) THE TAP MADE TO THE WATER MAIN, 2) THE POURING OR PLACEMENT OF THE VAULT, AND 3) THE INSTALLATION OF THE LID AND ECR DEVICE.
- WHEN CONCRETE METER VAULT SECTIONS ARE USED, THEY SHALL CONFORM TO ANSI/ASTM C478 CONCRETE 3000 PSI (MIN.). ALL REINFORCING STEEL SHALL BE SHOP FABRICATED. A REPORT SHALL BE FURNISHED ON THE 7 DAY & 28 DAY STRENGTH OF THE CONCRETE.
- THE ELECTRONIC COMMUNICATIONS REGISTER (ECR) SHALL BE INSTALLED AT THE TIME OF INSTALLATION OF THE ALUMINUM LID. THE CONTRACTOR HAS 30 DAYS FROM THE DATE OF TAPPING THE MAIN TO INSTALL THE ECR. AFTER THIS TIME, THE WATER WILL BE SHUT OFF WITHOUT NOTICE.
- IF A VAULT SECTION OTHER THAN CONCRETE IS PROPOSED, THE CONTRACTOR SHALL SUBMIT APPROPRIATE DOCUMENTATION FOR APPROVAL BY THE ENGINEER.
- IT SHALL BE THE RESPONSIBILITY OF THE CONTRACTOR TO FURNISH FITTINGS COMPATIBLE WITH THE TYPE OF PIPE FURNISHED.
- BOLTS & NUTS SHALL CONFORM TO ASTM A307 GR. B, AND ASTM A563 GR. A RESPECTIVELY.

The City of Enid  
401 West Overton  
Enid, Oklahoma 73708  
Telephone: (505) 324-2601 Fax: (505) 324-8846



The City of Enid, Oklahoma

REVISIONS	
Number	Description
1	10/18/94 Title Sheet
2	5/24/95 Delete 9\"/>

Project Number:  
Project Location:  
Sheet Title:  
Project Title:

WATER METER VAULT  
1 1/2\"/>



Date: 8/1/81  
Scale: NO SCALE  
Cad File: c:\DATA\SPCS\SWD11  
Drawn By: P.B.  
Designed By: R.H.  
Approved By: R.H.  
Sheet: of