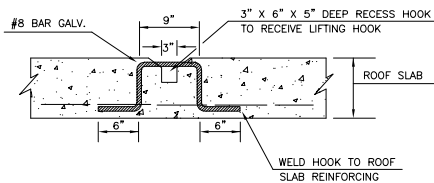
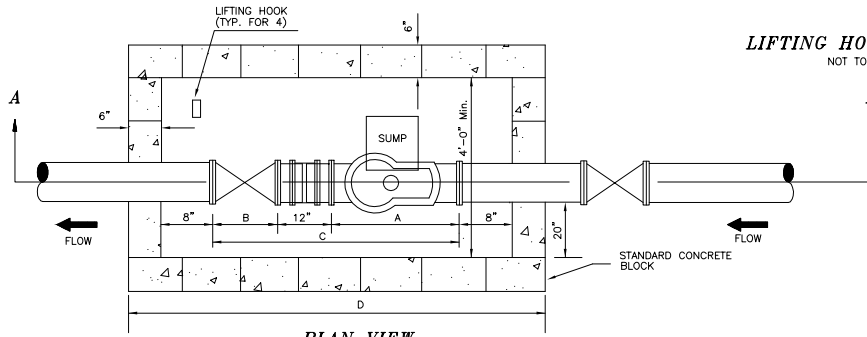


**ELEVATION VIEW SECTION AA
OFF-STREET VALVE VAULT TOP**

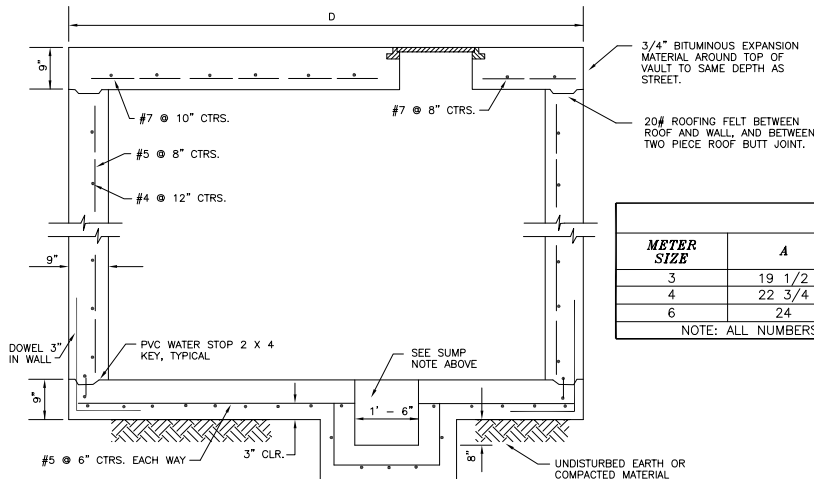
(NOT FOR TRAFFIC LOADS)
NOT TO SCALE



LIFTING HOOK DETAIL
NOT TO SCALE



PLAN VIEW
NOT TO SCALE



**ELEVATION VIEW ALTERNATE VALVE
VAULT FOR TRAFFIC LOADS**
NOT TO SCALE

LEGEND				
METER SIZE	A	B	C	D
3	19 1/2	8	39 1/2	67 1/2
4	22 3/4	9	43 3/4	71 3/4
6	24	10 1/2	46 1/2	74 1/2

NOTE: ALL NUMBERS IN INCHES.

NOTES:

- USE DUCTILE IRON PIPING AND D.I./C.I. FITTINGS FROM THE MAIN LINE TAPPING SLEEVE TO DOWNSTREAM FROM THE METER CHECK VALVE AT THE CONNECTING SLEEVE.
- INSPECTION. NOTICE SHALL BE GIVEN TO THE ENGINEER 48 HOURS IN ADVANCE SO THAT AN INSPECTOR MAY WITNESS EACH OF THE FOLLOWING: 1) THE TAP MADE TO THE WATER MAIN, 2) THE POURING OR PLACEMENT OF THE VAULT, AND 3) THE INSTALLATION OF THE LID AND ECR DEVICE.
- WHEN CONCRETE METER VAULT SECTIONS ARE USED, THEY SHALL CONFORM TO ANSI/ASTM C478 CONCRETE 3000 PSI (MIN.). ALL REINFORCING STEEL SHALL BE SHOP FABRICATED. A REPORT SHALL BE FURNISHED ON THE 7 DAY & 28 DAY STRENGTH OF THE CONCRETE.
- THE ELECTRONIC COMMUNICATIONS REGISTER (ECR) SHALL BE INSTALLED AT THE TIME OF INSTALLATION OF THE ALUMINUM LID. THE CONTRACTOR HAS 30 DAYS FROM THE DATE OF TAPPING THE MAIN TO INSTALL THE ECR. AFTER THIS TIME, THE WATER WILL BE SHUT OFF WITHOUT NOTICE.
- IF A VAULT SECTION OTHER THAN CONCRETE IS PROPOSED, THE CONTRACTOR SHALL SUBMIT APPROPRIATE DOCUMENTATION FOR APPROVAL BY THE ENGINEER.
- IT SHALL BE THE RESPONSIBILITY OF THE CONTRACTOR TO FURNISH FITTINGS COMPATIBLE WITH THE TYPE OF PIPE FURNISHED.
- BOLTS & NUTS SHALL CONFORM TO ASTM A307 GR. B, AND ASTM A563 GR. A RESPECTIVELY.

The City Of Enid
401 West Oneida, Box 17188
Enid, Oklahoma 73702
Telephone: (405) 241-2400 Fax: (405) 241-8946

CONTACTS:

Robert Hill, Director of Engineering Services, Ext. 344
Jason Briley, Civil Engineer, Ext. 348



The City Of Enid, Oklahoma

REVISIONS				
Number	Date	Description	Drawn By	Checked By
1	10/18/94	This Sheet		
2	5/24/95	Desk Top-Press Line		
3	8/18/95	New Design For 3", 4" & 6" Meter		
4	1/22/97	New Opening Detail for Aluminum Lid		
5	11/7/00	ECR Notes and Drawing		

Project Number:	Project Location:
Sheet Title: WATER METER VAULT 3", 4" & 6" METER	Project Title: SWD - 11 SHT. 2



Date:	8/1/81
Scale:	NO SCALE
Cad File:	G:\DATA\SPCS\SWD11
Drawn By:	P.B.
Designed By:	R.H.
Approved By:	R.H.
Sheet:	of