

City of Enid



Agenda

- Phase 2 Update
- Phase 3 and 4 Schedule
- Next Step

Phase 2 Program Goals

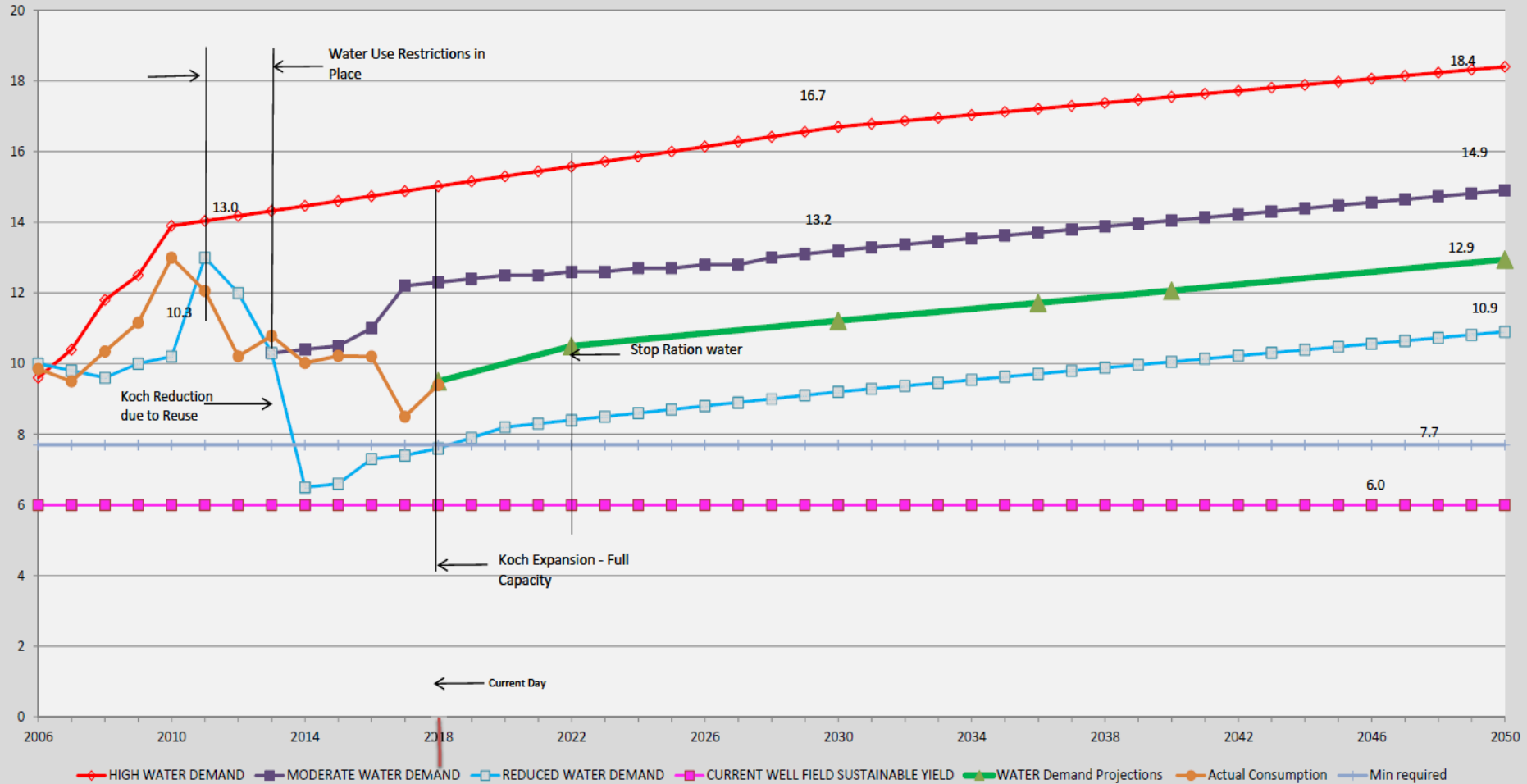
Prepare 30%
Design

Update Cost
Opinion
Capital and O&M

Develop
Executable
Plan

Growth Investment on the "Current" Water Demand Projections

Enid Annual Water Demand-2050



Alternate Phasing Options

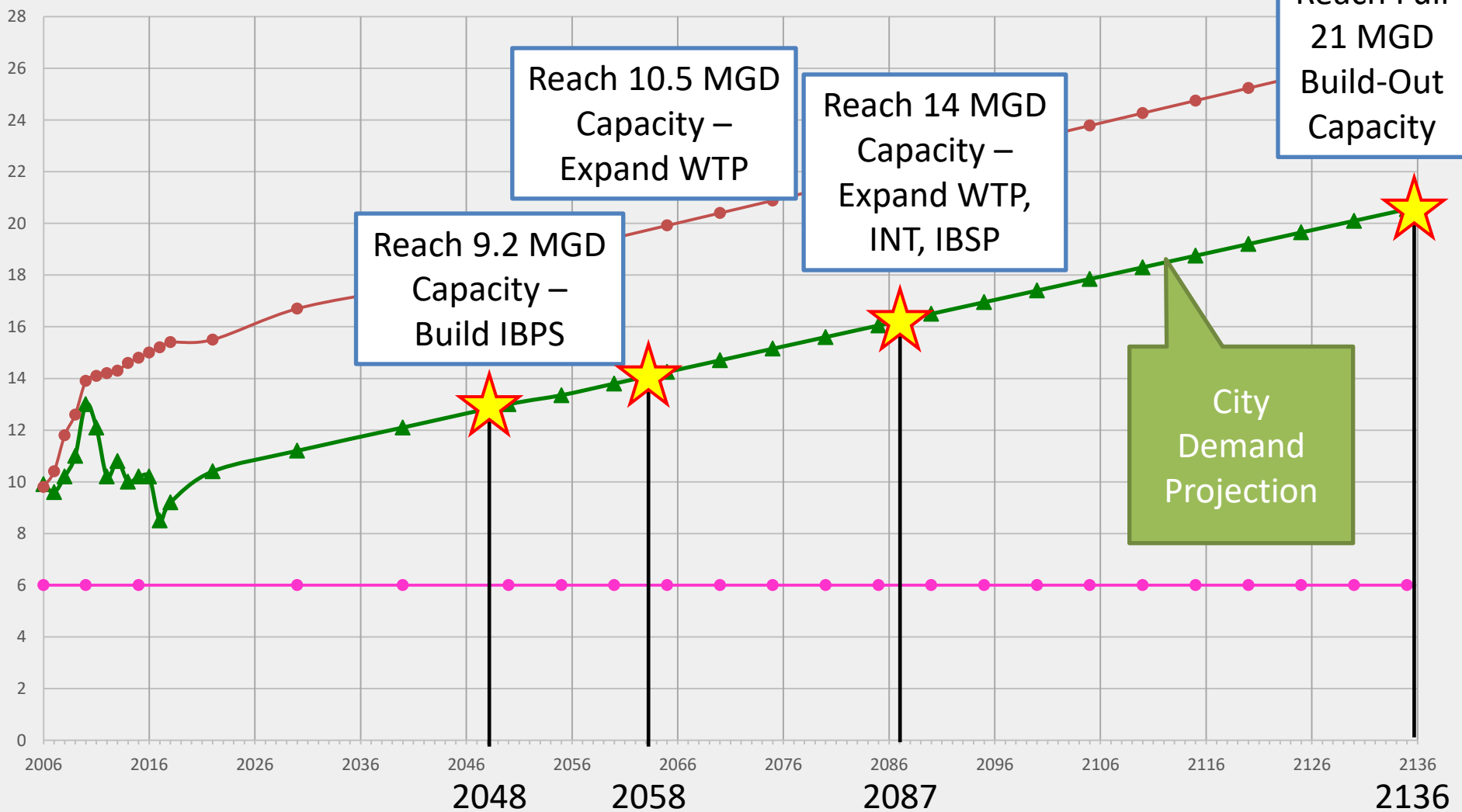
Option	Configuration	Program Cost	Initial Capacity	Growth Investment Year
1	30" Pipeline, No BPS 7 MGD WTP O3+GAC	\$291M	7 MGD	2038
2	30" Pipeline, No BPS 10.5 MGD WTP O3+GAC	\$299M	7 MGD	2038
3	36" Pipeline, No BPS 10.5 MGD WTP + GAC	\$299M	9.2 MGD	2053
4	30" Pipeline, One BPS 10.5 MGD WTP O3+GAC	\$305M	10.5 MGD	2063
5	36" Pipeline, No BPS 7 MGD WTP O3+GAC	\$307M	7 MGD	2038
6	36" Pipeline, No BPS 10.5 MGD WTP O3+GAC	\$315M	9.2 MGD	2048

Alternate Phasing Options

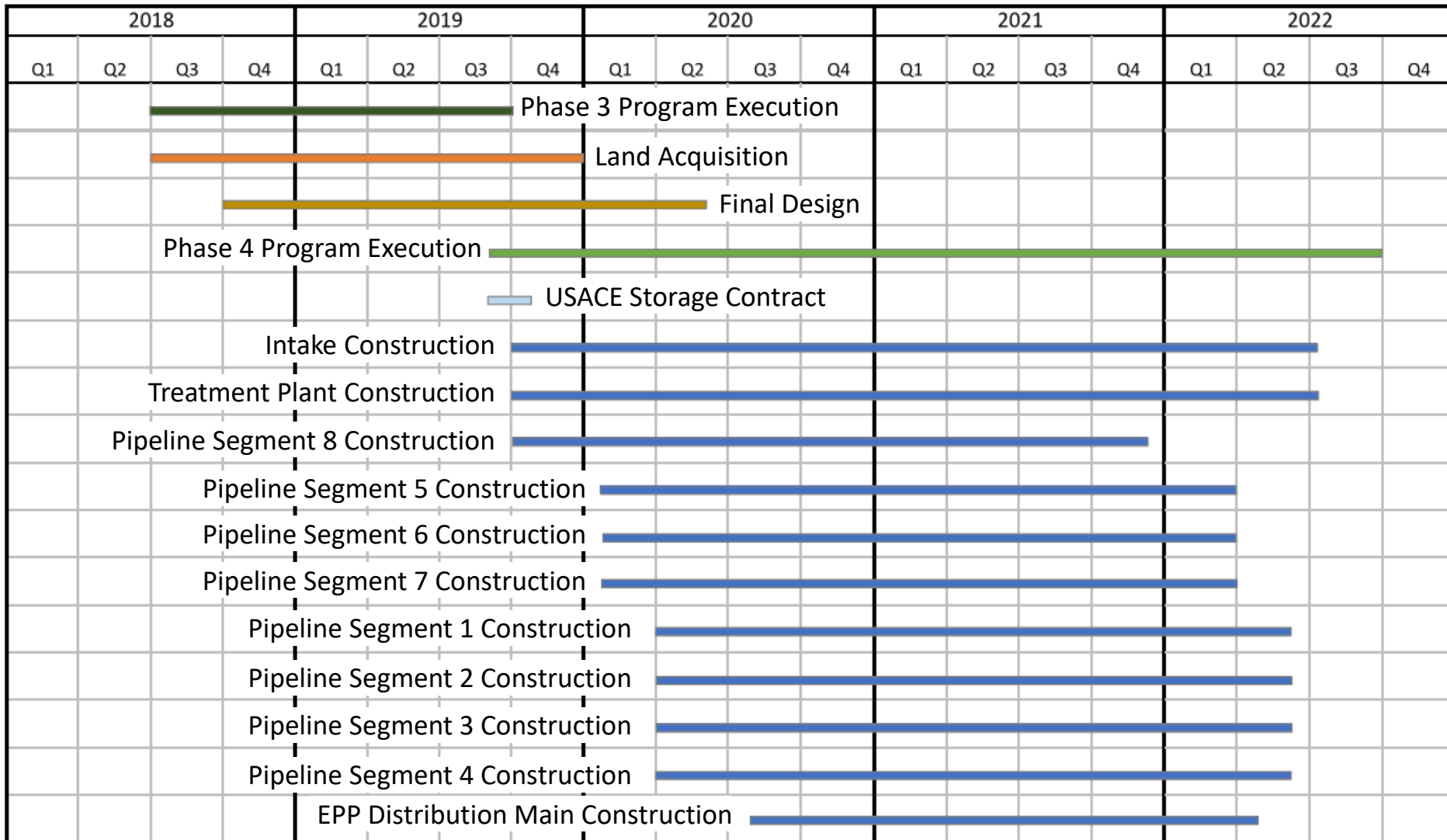
Option	Configuration	Program Cost	Priority	Sacrifices
1	30" Pipeline, No BPS 7 MGD WTP O3+GAC	\$291M	Water Quality & Cost	Pipeline Capacity & Treatment Capacity
2	30" Pipeline, No BPS 10.5 MGD WTP O3+GAC	\$299M	Water Quality, Cost, & Treatment Capacity	Pipeline Capacity
3	36" Pipeline, No BPS 10.5 MGD WTP + GAC	\$299M	Capacity & Cost	Water Quality
4	30" Pipeline, One BPS 10.5 MGD WTP O3+GAC	\$305M	Water Quality & Capacity	Pipeline Capacity & Cost
5	36" Pipeline, No BPS 7 MGD WTP O3+GAC	\$307M	Water Quality & Pipeline Capacity	Treatment Capacity & Cost
6	36" Pipeline, No BPS 10.5 MGD WTP O3+GAC	\$315M	Water Quality & Capacity	Cost

Option 6 Growth Investment Timeline

Current Demand Projections



Phase 3 & 4 Schedule



Next Step

- Select system configuration option
- Initiate financing activities

