

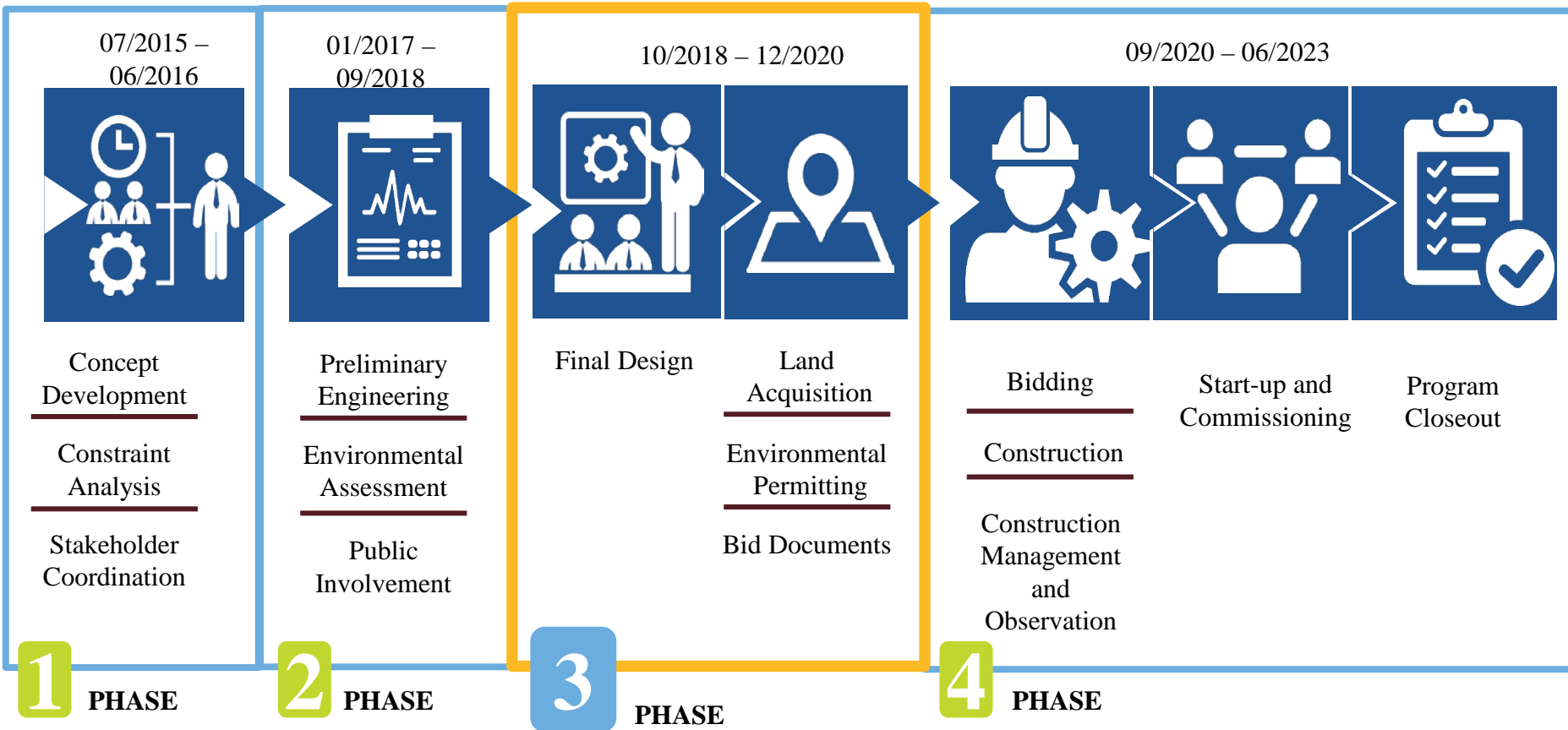


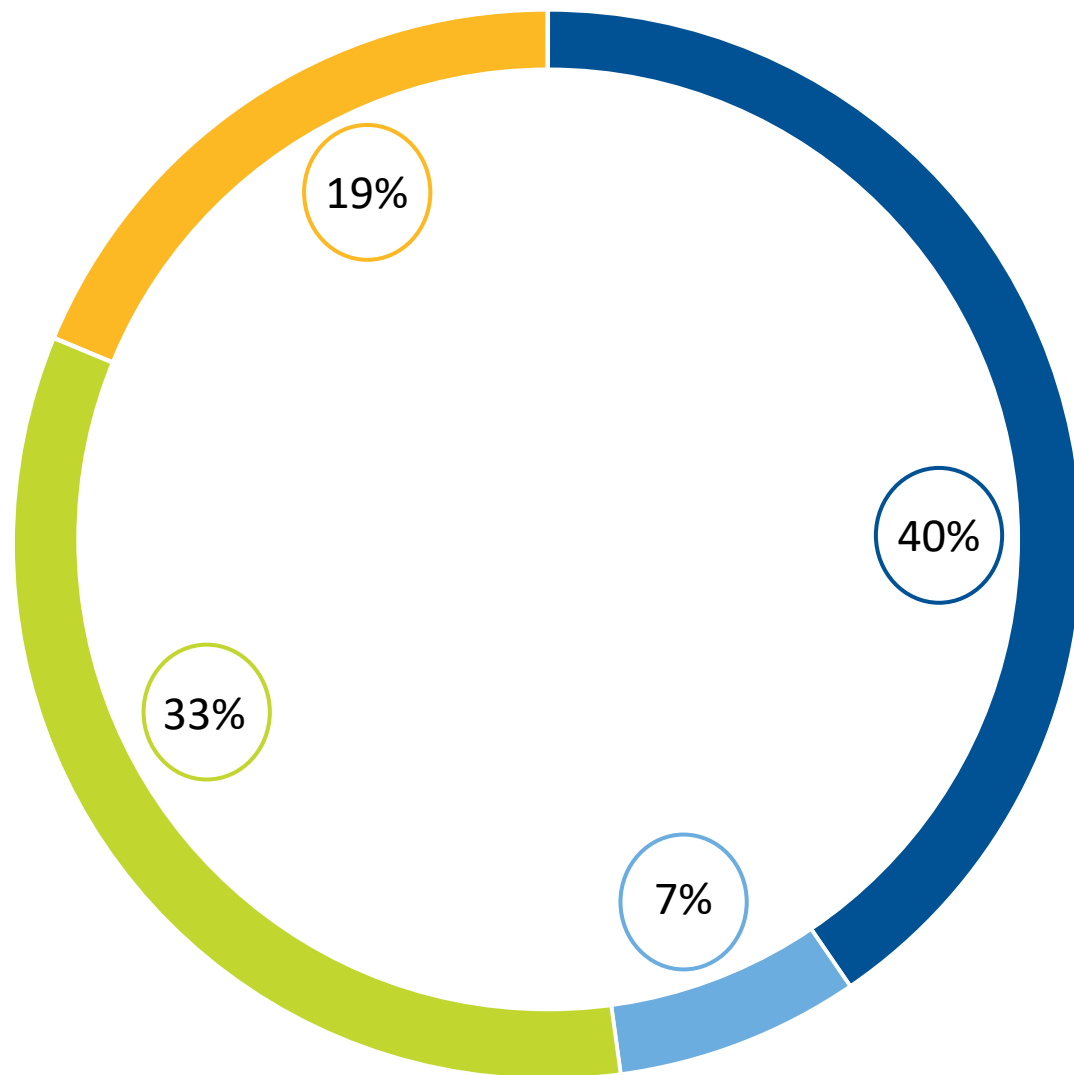
Agenda

- Program Overview
- Easement Acquisition Update
- Survey Status
- Environmental Update
- CMAR Selection Process
- Flooding Impacts

- Provide water from Kaw Lake to the City of Enid
- Major Components
 - Intake structure at Kaw Lake
 - 70 mile pipeline
 - Water Treatment Plant
 - Distribution System Connection
- Full Build-Out to provide 21 MGD
- Phased Plan to provide 10.5 MGD

Program Phases

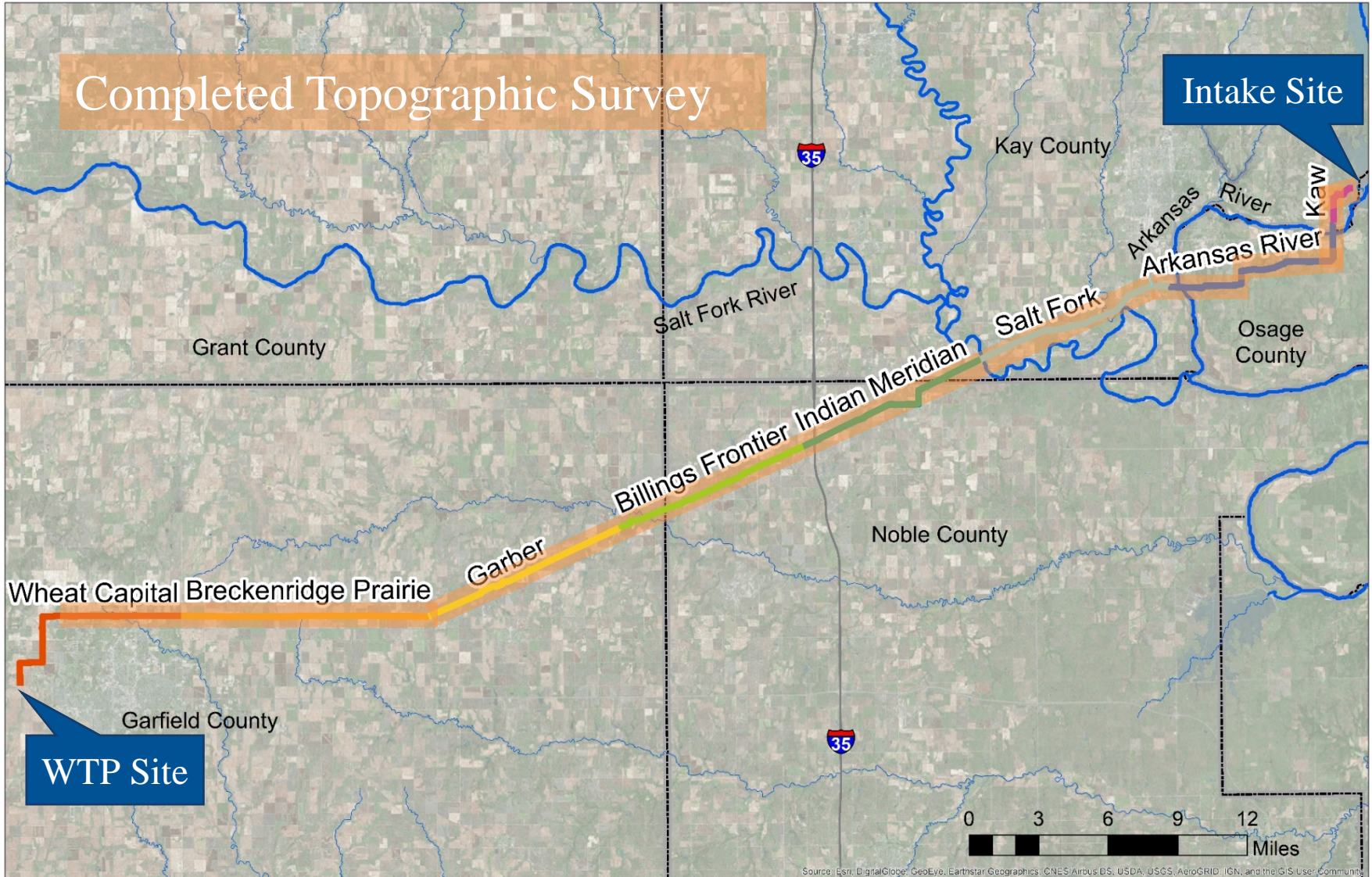




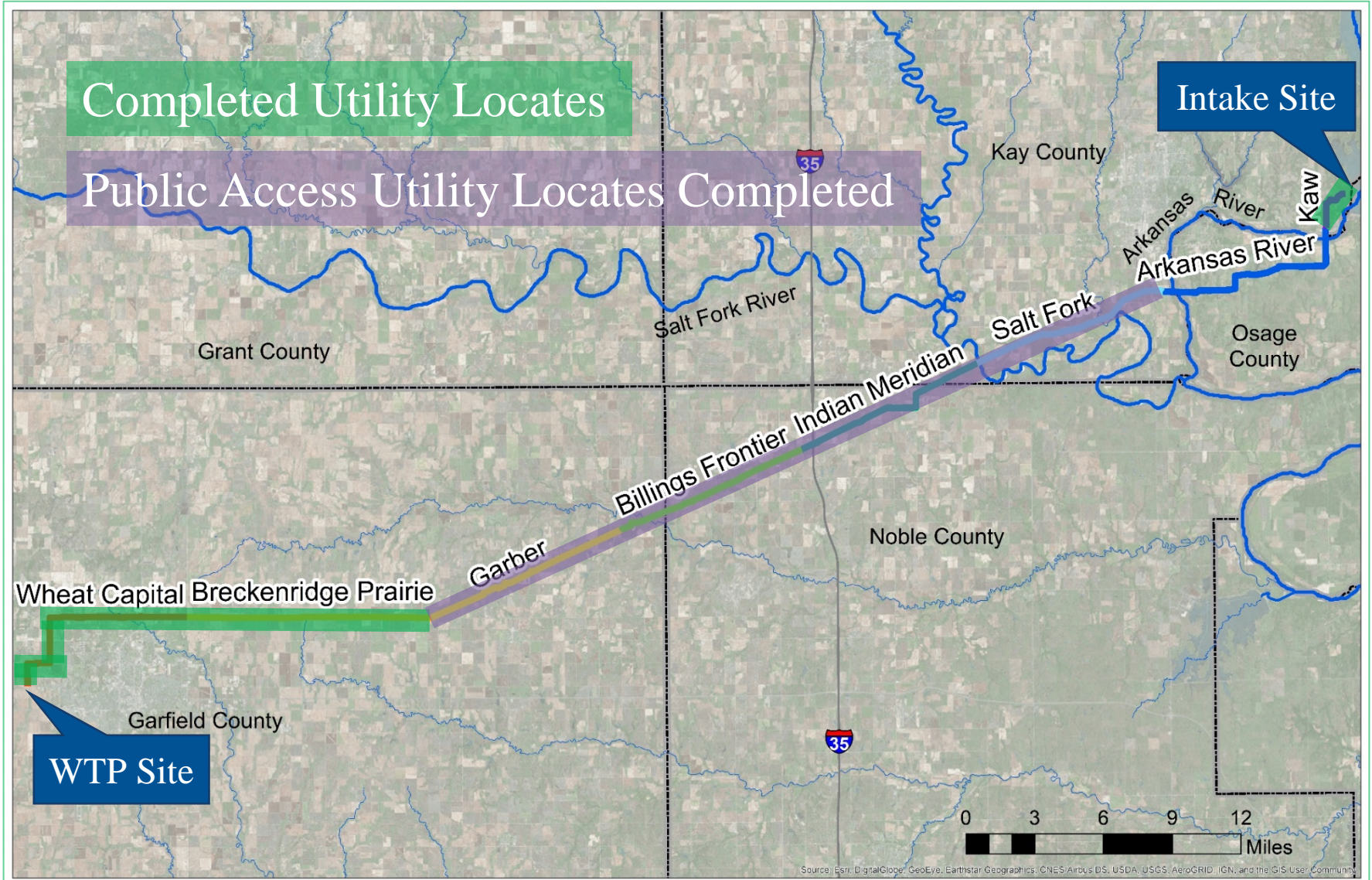
As of June 12, 2019

- Offer Packets in Preparation
- Owners Provided with Notice of Intent, Pending Offer Delivery
- Offers Made Pending Owner(s) Acceptance
- Easement Offers Accepted by Owner(s)
(43 of 230 Parcels)

Survey Status



Utility Locates Status

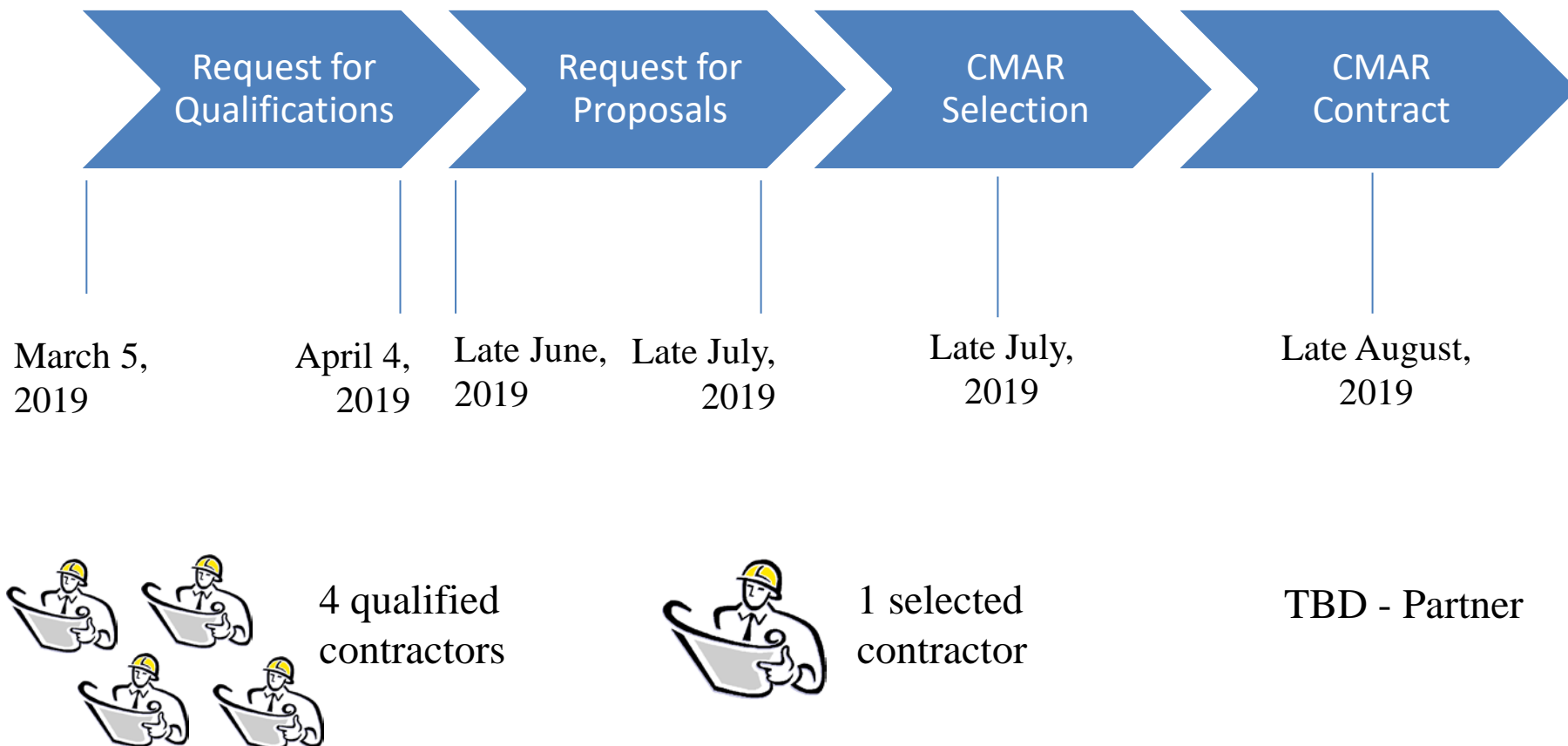


- Status of Environmental Assessment:
 - Biological Studies – 93%
 - Cultural Resource Studies – 85%
 - Hazardous Materials Studies – 95%
 - Draft Environmental Assessment – 80%

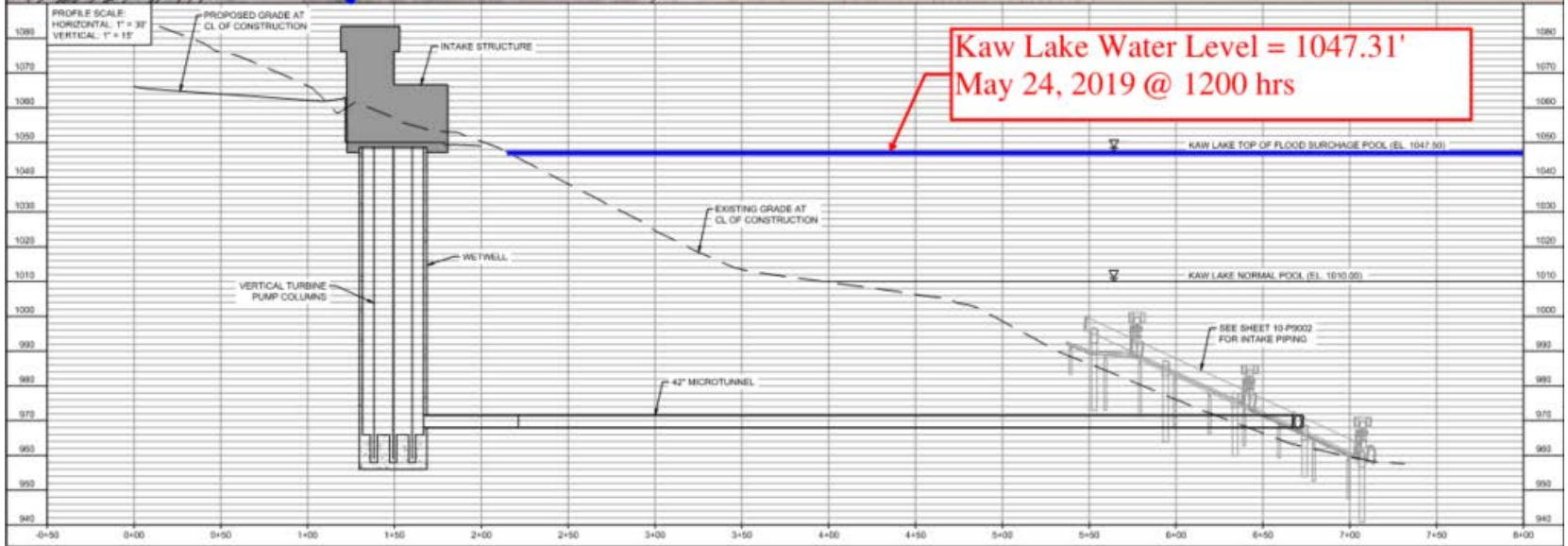
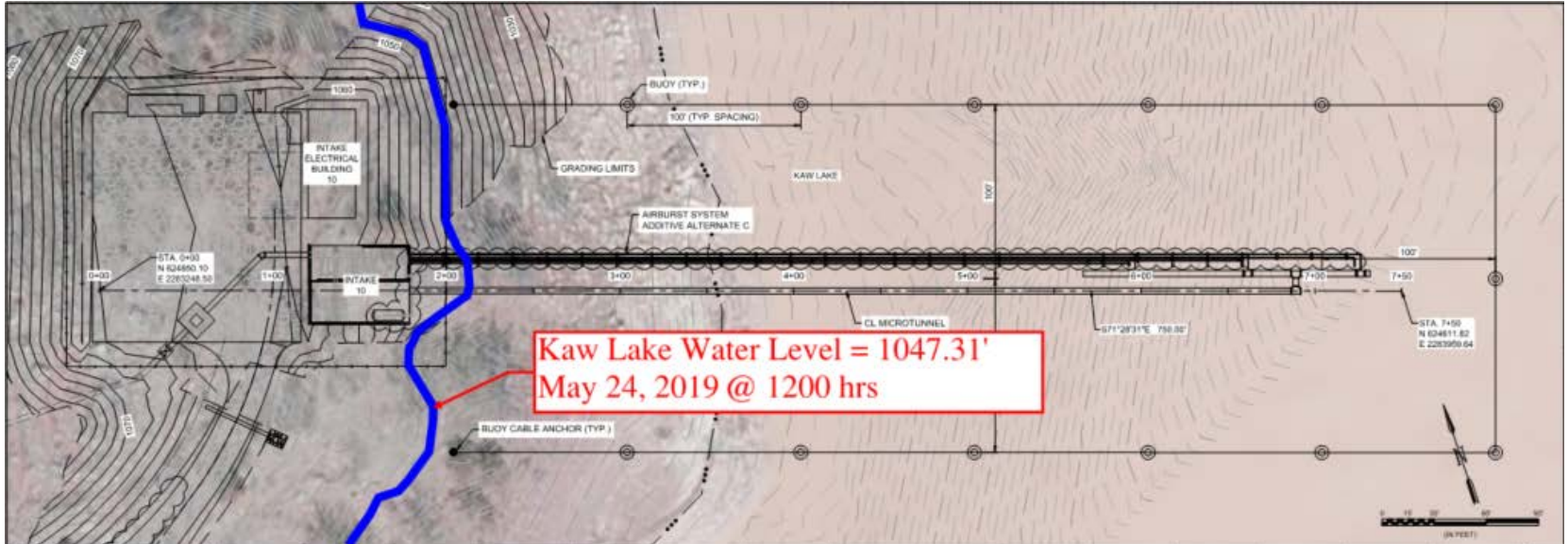


CMAR Selection Process

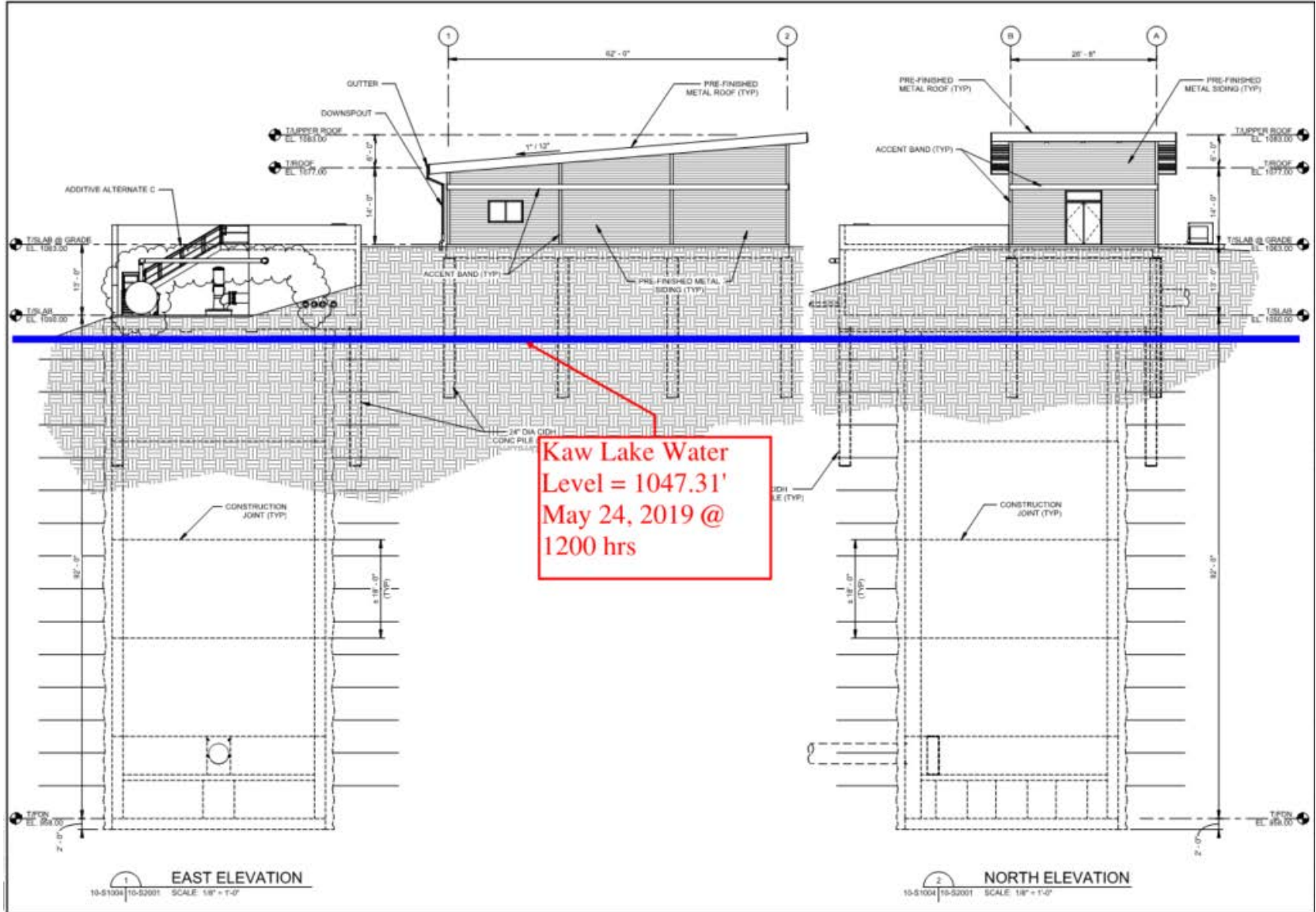
Process compliant with Oklahoma Department of Environmental Quality requirements



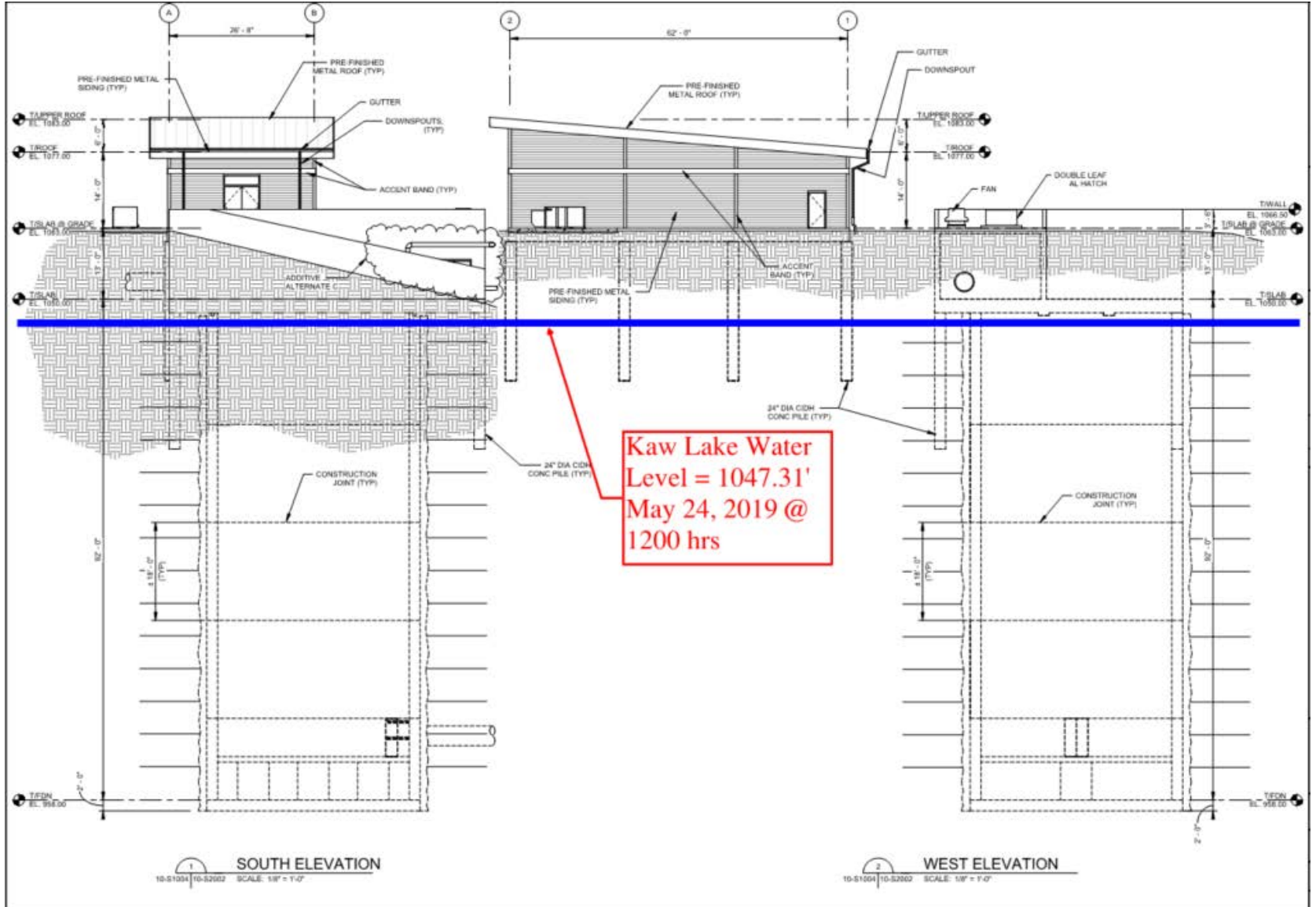
Flooding Impacts



Flooding Impacts



Flooding Impacts



1 SOUTH ELEVATION
10-S1001/10-S2002 SCALE: 1/8" = 1'-0"

2 WEST ELEVATION
10-S1001/10-S2002 SCALE: 1/8" = 1'-0"

Flooding Impacts

