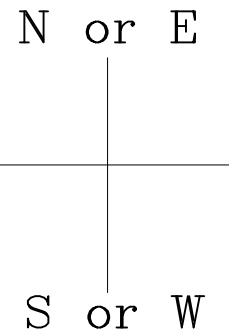
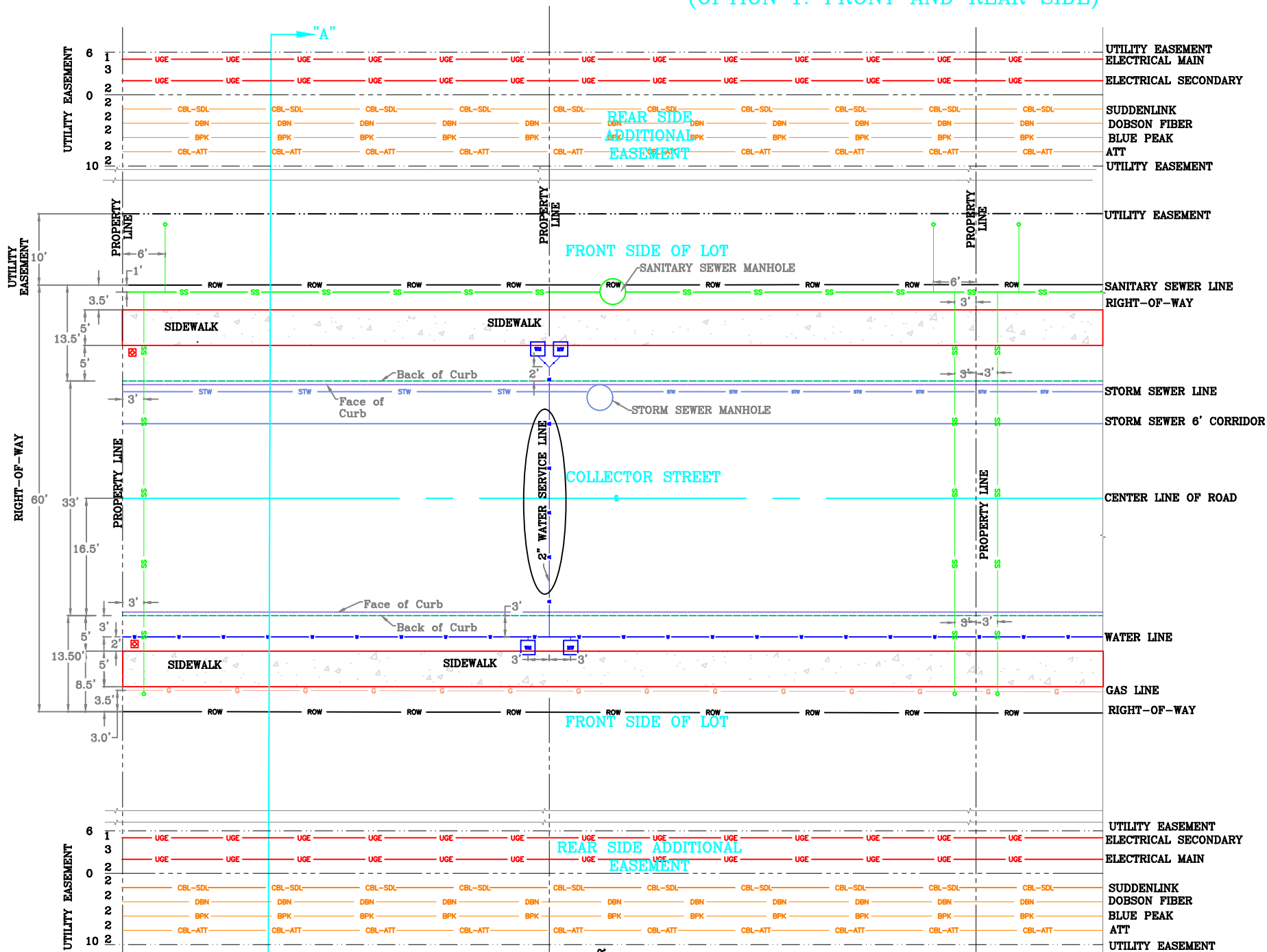
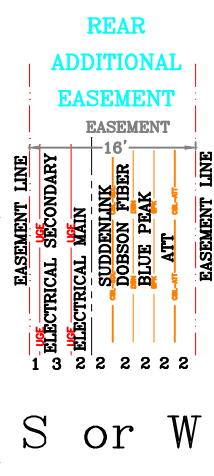
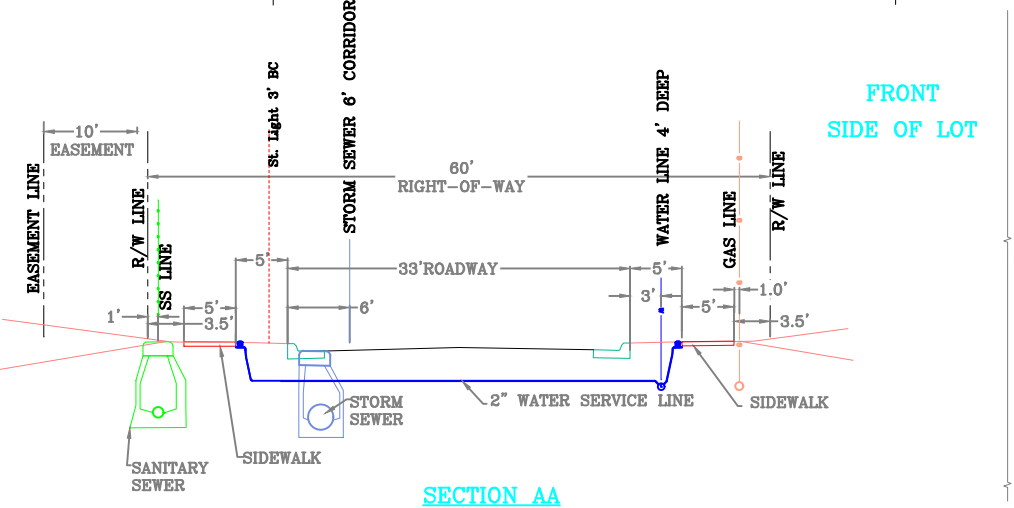
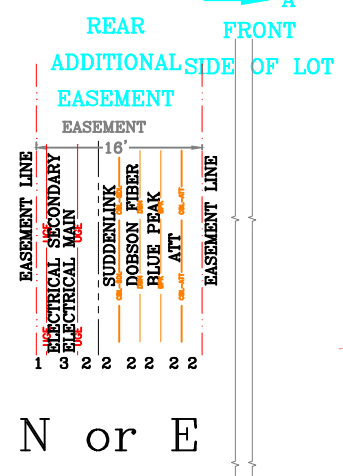


UTILITY LOCATION PLAN FOR COLLECTOR STREETS (OPTION 1: FRONT AND REAR SIDE)



LEGEND:
■ LIGHT POLE
■ WATER METER



| UTILITY | DEPTH |
|----------------------|-----------|
| ELECTRICAL SECONDARY | 2.5' |
| ELECTRICAL MAIN | 2.5' |
| STORM SEWER LINE | AS NEEDED |
| SS LINE | " " |
| SUDDENLINK | 2.5' |
| DOBSON FIBER | 3.0' |
| BLUE PEAK | 4.0' |
| ATT | 2.5' |
| GAS LINE | 3.0' |
| WATERLINE | 3.0' |

The City of Enid
 401 West P.O. Box 1788 Fort Road
 Enid, Oklahoma 73703
 Tele: (800) 254-0400 Fax: (505) 234-0946
 Contact:
 Christopher Gonski, Director of Engineering
 Robert Hitt, P.E., City Engineer



| REVISIONS | Number | Date | Description |
|-----------|--------|------|-------------|
| | | | |
| | | | |
| | | | |
| | | | |

Project Number: _____
 Project Location: ENID, OKLAHOMA

Sheet Title: OPTION 1: FRONT AND REAR SIDE
 Project Title: COLLECTOR ST. UTILITIES

Engr. Seal: _____

Date: DEC 2018
 Scale: _____
 Cad File: _____
 Drawn By: KM
 Designed By: KM
 Approved By: RH
 Sheet: 3 of 4

Date: 11/02/2021