



# WHAT **NOT** TO WEAR ON TV



## Avoid Wearing...

### 1. White

A little is okay, but a lot will often look blown out on TV.



*Lisa's white shirt is blowing out up around her collar. This means that the camera just sees intense white light with no definition.*

**Instead:** A light grey is a better substitute for white, but a mid-tone color is better.

### 2. Green

Green is only a problem if you are appearing in front of a green screen. The chroma key will eliminate your green clothing just like the background, depending on the shade and brightness of the color. But even a dark or dull green will partially key out in many cases.



*Jerald's shirt here has mild green stripes, but that is enough. You can see the fence and bollards showing through his shirt.*

**Instead:** Wear brown, blue, red, yellow...

### 3. Black

Black is not as much a problem as white, but it can easily disappear if enough light doesn't fall on it. That can be good in some cases, but not in every case. It is not as much of a problem now as in the SD days. Modern

cameras tend to have a wider dynamic range which allows them to more effectively pick up black and white which are at the outer limits of the dynamic range.



*Tree's black shirt and jacket are only discernable by the shape of the neck opening. A little light falls on her left shoulder, but her right shoulder practically disappears.*

**Instead:** Again, a dark blue or gray would better if you want a dark color without disappearing so easily.

### 4. Thin stripes

Horizontal stripes in particular will look electric if the size roughly lines up with the horizontal lines of the screen. Not as much of a problem as it was in the standard definition TV days, but still can cause problems. Mainly, thinner stripes cause the trouble with HD, as opposed to the thicker stripes in the old days, and high contrast are the most likely to cause trouble (black and white or dark blue and white, etc.).



*Johnny Rae's striped shirt would have been swimming all over the screen in the old SD (standard definition) days. These days it might or might not present a problem. His stripes are actually light and dark gray, which is not quite as prone to trouble as black and white. Demetrius' shirt is definitely too much white, however.*

**Instead:** A plaid pattern is less likely to cause the swimming effect. Random patterns are usually fine.

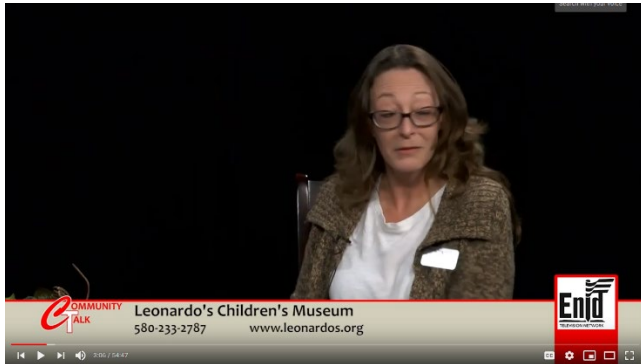
## What Not to Wear on TV

2/8/22

2

### 5. Large, shiny jewelry

Shiny objects will often reflect light in a distracting way. This can include name badges. If chroma keying is involved, the shine can reflect green and cause unwanted keying. And large necklaces can create unwanted noise by banging into lapel mics.



Heather's silver name badge, when angled just right, would catch the light and be a blinding mass of hot, molten reflected light.



Hannah is wearing a monstrosity-sized necklace in this presentation that regularly clanged into the mic.

**Instead:** Smaller jewelry is better. A necklace that interferes with the mic should be removed. Likewise, name tags can be removed because the person's name can be keyed on the screen.

### 6. Tops with no neckline

Extremely thin, floppy dresses and blouses - and especially the kind without any kind of collar within a foot of the subject's head - these are difficult to attach a lapel mic to. Of course, lapel mics aren't the only kind of mic used. But if the setting is an indoor interview, chances are it will be a lapel mic.



Erin presented us with a challenge on this particular day. The mic (hidden by her card) is right in the middle where her dress stops - a bit low and requiring the mic to somehow come up through her dress or around her arms below the top of the dress...not the easiest setup.



Jessica's jacket (or whatever you call that thing) is so floppy, the weight of the microphone is too much for it to stay in place.

**Instead:** Wear tops that come closer to your head. Wear more robust fabrics.

### 7. Plastic clothes

By plastic we mean those shiny nylon (or whatever they are) athletic jackets and pants. Not only is the shine a potential problem, but the material makes squeaky noises as it moves around.

**Instead:** Wear soft clothes that don't make rustling noises. Muted fabrics look good on camera.

# What Not to Wear on TV

2/8/22

## Wear This...



*Lincoln is wearing a mauve shirt and gray jacket. Both show light and shadow nicely without overpowering the shot.*



*Dr. Vilaythong, though wearing a dangerously large necklace and dress of lightweight material, nonetheless gave us a good place to clip a microphone by wearing a jacket. Her jacket is also a very good neutral color.*



*The Blue Star Mothers are notorious for wearing their biker jean jackets, and these always give us a good place to clip a microphone. The jacket material is nice and stout for holding a mic in place.*



*Jenny is wearing white and horizontal stripes. However, the white is minimal, and the stripes are of such a soft, mild color and value, they don't pose a problem. And the green is no problem because this was shot on location – not in front of a green screen.*