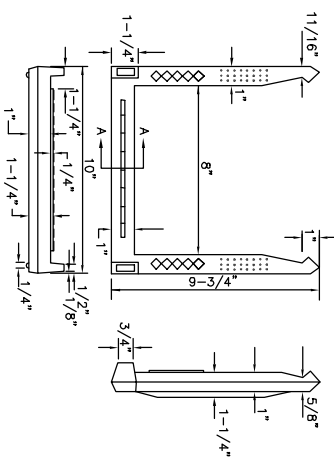


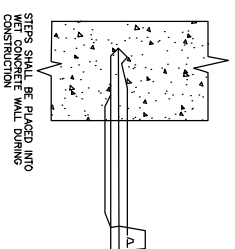
DETAIL STANDARD MASONRY MANHOLES
NOT TO SCALE

SEE SHEET NO. 2 FOR GENERAL NOTES.



POLYPROPYLENE
PLASTIC STEPS
NO. 3 GERRARD STEEL ROD

SECTION A-A



PS-1 OR PS-3
MANHOLE STEP
NOT TO SCALE

The City Of Enid
401 West Owen K. Garrett Road
P.O. Box 1788
Enid, Oklahoma 73702
Telephone: (800) 234-0800 Fax: (800) 234-8946

Contacts:

Robert Hill, Director of Engineering Services, Ext 344
Jason Briney, Civil Engineer, Ext 348



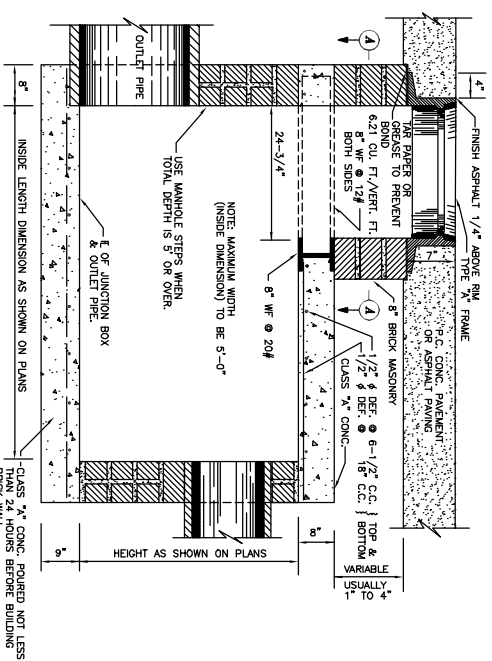
REVISIONS		
Number	Date	Description
1	10/18/94	Title Sheet
2	3/3/00	Specification Review Changes

Project Number:
Project Location:

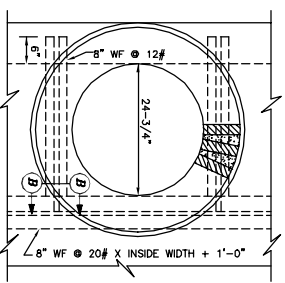
Sheet Title:
STANDARD MASONRY MANHOLES AND STEPS
Project Title:
DD - 1 SHT. 1



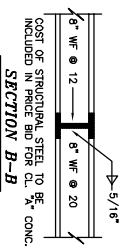
Date: 8/1/81
Scale: NO SCALE
Cod File: CA/DA/DEV/ENI
Drawn By: P.B.
Designed By: R.H.
Approved By: R.H.
Sheet: 4



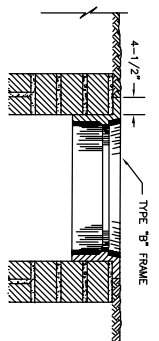
SECTION



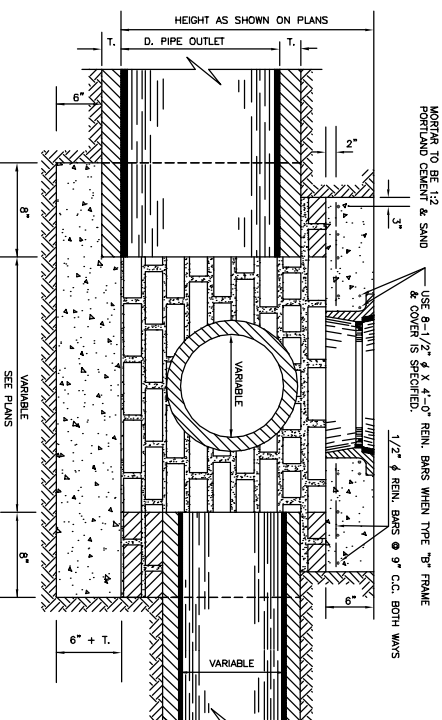
SECTION A-A



SECTION B-B



SECTION SHOWING
TYPE 'B' FRAME FOR
USE OUTSIDE OF SURFACING



SECTION C-C

DETAIL OF BRICK MASONRY JUNCTION BOX LOCATED OUTSIDE OF SURFACING

- GENERAL NOTES**
- All Manholes to be 4' inside diameter unless larger diameter is required.
 - For Details of Frame and Cover see Standard Manhole Frame and Cover, SMD-3.
 - Brick Masonry in straight and circular walls a radius of 2' or greater shall be stretchers with every fifth course headers. Circular walls with a radius less than 2' every fifth course shall be stretchers and the remainder headers.
 - Steps to be placed at Header courses when required.
 - Mortar to be 1:2 Portland Cement and Sand. Joints to be shovled Joints completely filled with mortar. Buttered Joints will not be permitted. Where a mortar coat is desired it shall be 1/2" thick and shall be applied while brick masonry is clean and damp.
 - Manholes to be paid for as "Manhole" (Each) to 5'-0" in height. Height over 5' will be paid for as "Additional Depth in Manhole" (Vert. Ft.).
 - When Pre-cast Storm Sewer Manholes are used the Material shall meet ASHTO Designation M-199 and the design shall be submitted to the Engineer for approval.
 - Junction Box wall construction to be measured by cu. ft. of brick masonry and to be paid for as "Junction Boxes" (Cu. Ft.). Deductions will be made for openings and will not be measured as a pay item.

The City Of Enid
401 West Owen K. Garrett Road
P.O. Box 1788
Enid, Oklahoma 73702
Telephone: (800) 234-0800 Fax: (800) 234-8946

Contacts:

Robert Hill, Director of Engineering Services, Ext 344
Jason Briney, Civil Engineer, Ext 348



REVISIONS		
Number	Date	Description
1	10/18/94	Title Sheet
2	3/3/00	Specification Review Changes

Project Number:
Project Location:

Sheet Title:
STANDARD MASONRY JUNCTION BOX
Project Title:
DD - 1 SHT. 2



Date: 8/1/81
Scale: NO SCALE
Cod File: CA/DA/DEV/ENI
Drawn By: P.B.
Designed By: R.H.
Approved By: R.H.
Sheet: 4