

The City of Enid
401 West Park, Enid, Oklahoma 73701
Telephone: (505) 324-8000 Fax: (505) 324-8046

Contacts:
Robert Hill, Director of Engineering Services, Est. 344
Jason Bishay, Civil Engineer, Est. 348

The City of Enid, Oklahoma

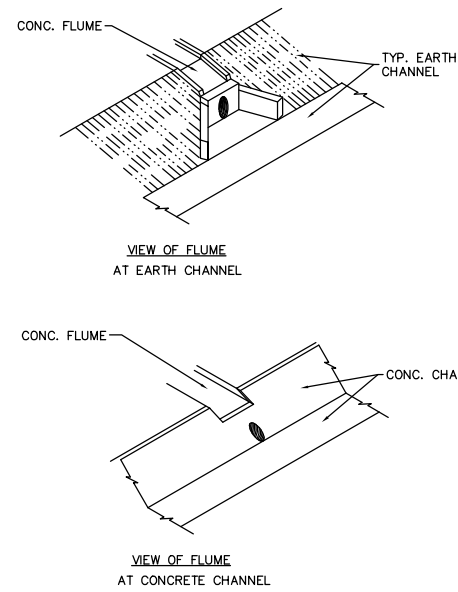
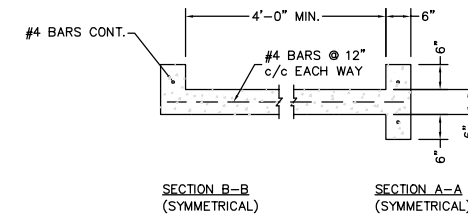
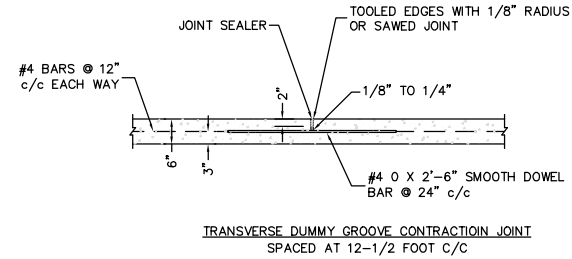
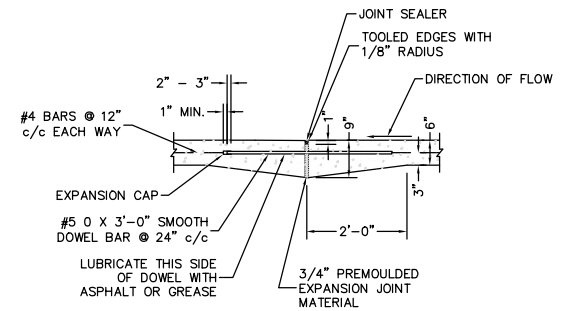
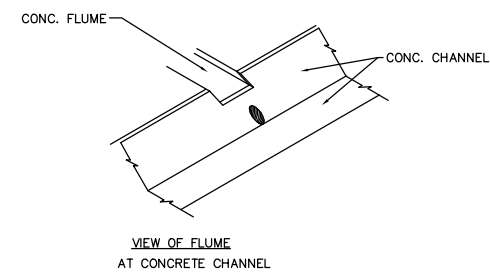
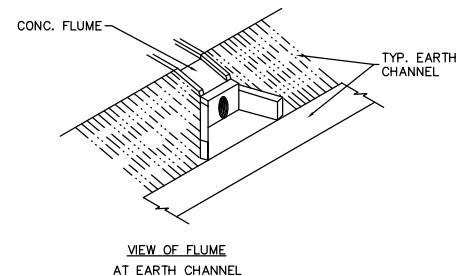
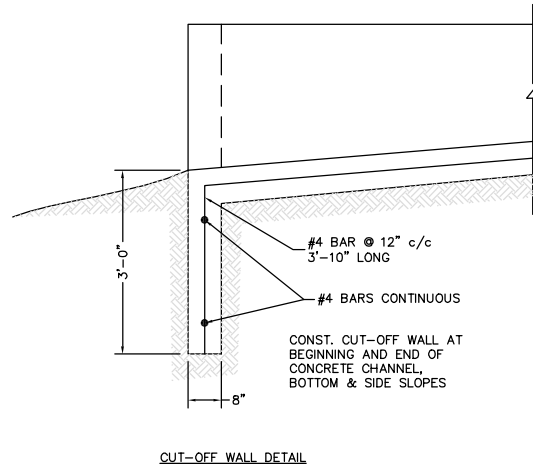
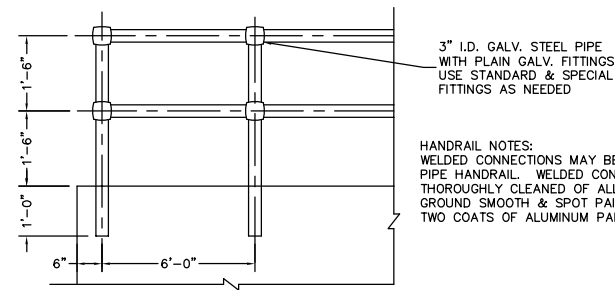
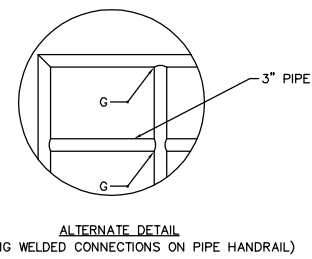
REVISIONS	Number	Date	Description

Project Number	Project Location
DD-20	

Sheet Title	Project Title
CONCRETE CHANNEL LINER & DETAILS	DD-20

Engr. Seal:

Date: 6/1/00
Scale: nts
Cod File: \DATA\SPCS\4220
Drawn By: CLH
Designed By: JB
Approved By: RH
Sheet: 1 of 1



* NOTE:
3/4" EXPANSION JOINT @ 100' MAX.
SAWED CONT. JOINT @ 20' MAX.

CONCRETE FLUME DETAIL

The City of Enid
401 West Park, Enid, Oklahoma 73701
Telephone: (505) 324-8000 Fax: (505) 324-8046

Contacts:
Robert Hill, Director of Engineering Services, Est. 344
Jason Bishay, Civil Engineer, Est. 348

The City of Enid, Oklahoma

REVISIONS	Number	Date	Description

Project Number	Project Location
DD-21	

Sheet Title	Project Title
FLUME & CHANNEL LINER DETAILS	DD-21

Engr. Seal:

Date: 6/1/00
Scale: nts
Cod File: \DATA\SPCS\4221
Drawn By: CLH
Designed By: JB
Approved By: RH
Sheet: 1 of 1