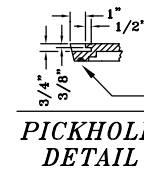
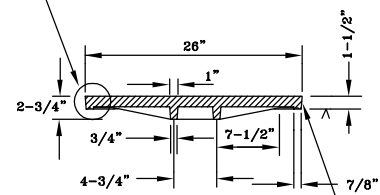


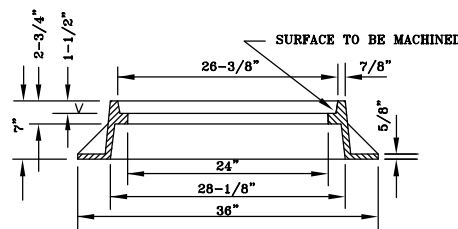
PLAN
Not To Scale



MACHINE GROOVE IN LID SEAT FOR 1/4" DIA. POLYISOPRENE SELF-SEAL GASKET.



STANDARD LID
Not To Scale



STANDARD FRAME
Not To Scale

GENERAL NOTES:
CAST IRON FRAME & COVER - NEENAH R-1642 (SHOWN) OR DEETER BOUNDARY 1247 SERIES OR APPROVED EQUAL.
WITH SELF-SEALING LID (O-RING).

MATERIAL: CAST GRAY IRON ASTM A-48, CLASS 35B
COMPONENT NO.: FRAME; 1370 - 0002, LID; 1642 - 0073
FINISH: NO PAINT

The City of Enid
401 West Park, Enid, Oklahoma 73701
Telephone: (505) 234-8846 Fax: (505) 234-8846
Contacts:
Robert Hill, Director of Engineering Services, Est. 344
Jason Britney, Civil Engineer, Est. 348



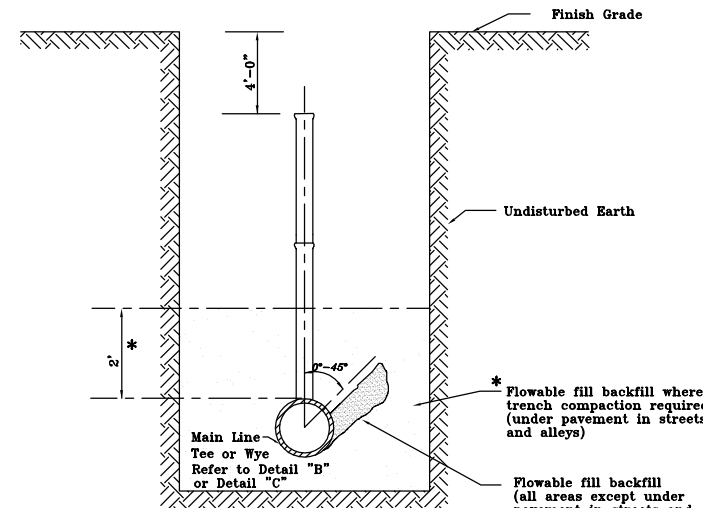
REVISIONS	Number	Date	Description

Project Number: **STANDARD MANHOLE FRAMES & COVER**
Project Location: **SWD - 3**

Sheet Title: **STANDARD MANHOLE FRAMES & COVER**
Project Title: **SWD - 3**



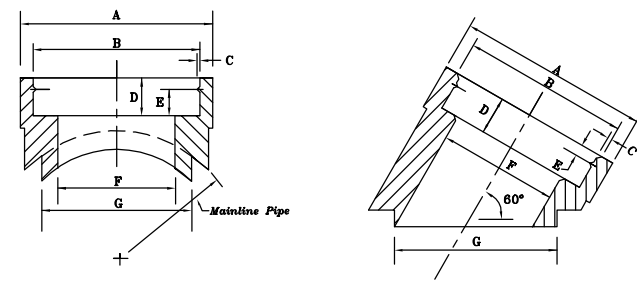
Date: 6/1/00
Scale: NO SCALE
Cod File: G:\DATA\SPES\SW03-4
Drawn By: P.B./C.L.H.
Designed By: R.H.
Approved By: R.H.
Sheet: of



DETAIL "A"

- Notes:**
- *1. WHERE SERVICE LINES AND OR SERVICE LINE CONNECTIONS ARE UNDER PAVED STREETS OR ALLEYS, THE SERVICE LINES SHALL BE CONSTRUCTED OF CAST IRON AND BACKFILL SHALL BE COMPACTED TO 95% STANDARD PROCTOR.
 - 2. SOIL AROUND SERVICE LINE CONNECTION SHALL BE COMPACTED TO DENSITY OF SURROUNDING SOIL. FLOWABLE FILL SHALL BE PLACED TO SUPPORT TEE OR WYE PER DETAIL.
 - *3. WHERE BACKFILL WILL BE COMPACTED, PIPE & FITTINGS SHALL BE PROTECTED BY PLACEMENT OF FLOWABLE FILL TO 2" ABOVE THE PIPE. PIPE SHALL NOT BE COVERED UNTIL PIPE CONNECTION IS INSPECTED.
 - 4. INSIDE DIMENSION OF TEE OR WYE SHALL NOT BE SMALLER THAN INSIDE DIAMETER OF SERVICE LINE. OUTSIDE DIMENSION OF SERVICE LINE SHALL BE LARGER THAN INSIDE DIMENSION OF TEE OR WYE TO PREVENT ANY PART OF SERVICE LINE FROM PROTRUDING INTO MAIN.

SANITARY SEWER SERVICE LINE CONNECTION
Not To Scale



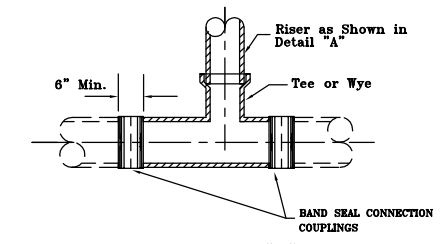
DETAIL "C"

SIZE	A	B	C	D	E	F	G	MAINLINE PIPE
MISSION 4" T	6 3/4"	5 5/8"	.025"	1 3/4"	1 3/32"	13/16"	4 3/8"	8" thru 18" Specify
MISSION 6" T	9"	7 29/32"	.025"	1 3/4"	1 3/32"	6"	7 1/4"	8" thru 18" Specify
MISSION 6" Y	9"	7 29/32"	.025"	1 3/4"	1 3/32"	6"	7 1/4"	8" thru 18" Specify
SOIL PIPE 4" T	5 15/16"	5 1/8"	—	2 3/4"	—	13/16"	4 5/16"	

- Notes:**
- MISSION TAPPING SADDLE KIT OR EQUAL MEETS ALL PERFORMANCE CRITERIA OF ASTM C-700 AND C-425.
 - MATERIAL: RIGID HIGH IMPACT URETHANE.
 - FITTING TO BE BONDED INTO CORED HOLE WITH EPOXY ADHESIVE.
 - CORED HOLE TAPPED WITH HIGH TORQUE TAPPING MACHINE, HIGH TORQUE, 1 1/2 H.P. 4" AND 6" TAPS, WATER COOLED, DIAMOND CUTTING HEADS. (OR EQUAL).
 - INSTALLATION TO BE COMPLETED IN ACCORDANCE WITH TAPPING SADDLE KIT MANUFACTURE RECOMMENDATIONS.

TAPPING SADDLE KIT
Not To Scale

- GENERAL NOTES:**
- THE PURPOSE OF THIS DETAIL SHEET IS TO ESTABLISH MINIMUM STANDARDS FOR CONNECTING TO THE PUBLIC SANITARY SEWER SYSTEM THAT WILL PROVIDE A LONG TERM WATER TIGHT SYSTEM THAT WILL NOT IMPERE THE OPERATION OR MAINTENANCE OF THE PUBLIC SYSTEM. ANY SYSTEM OR OPERATION THAT WOULD LEAD TO PROTRUDING TAPS, BROKEN OR DAMAGED SEWER LINES, ALLOW INTRUSION OF SURFACE OR GROUND WATER, FAILURE CAUSED BY BACKFILL OR SURFACE OPERATION ARE PROHIBITED AND SHALL NOT BE USED.
 - FLOWABLE FILL SHALL CONSIST OF A MIXTURE OF SAND, CEMENT AND WATER IN PROPORTIONS AND CURED TO PRODUCE A MIXTURE WITH A MINIMUM STRENGTH OF 50 PSI WHEN TESTED IN COMPRESSION BY STANDARD TEST FOR FLOWABLE FILL.



TEE DETAIL "B"

- Notes:**
- CUT OUT COMPLETE SECTION OF THE BARREL AND REPLACE WITH TEE OR WYE. CUT EXISTING PIPE BY USE OF COMPRESSION CHAIN PIPE CUTTER TOOL.
 - JOIN FITTING AT ENDS WITH TWO BAND SEAL CONNECTION COUPLINGS. COUPLINGS TO CONFORM TO THE MATERIAL AND PERFORMANCE STANDARDS OF ASTM C-425 FOR COMPRESSION JOINTS FOR VITRIFIED CLAY PIPE AND FITTINGS.
 - TEE OR WYE SHALL BE CLAY MEETING ASTM C-700 OR CAST IRON, MEETING CITY OF ENID STANDARD SPECIFICATIONS.
 - CUT OPENING IN EXISTING PIPE 1/2" - 1" LONGER THAN FITTING TO BE INSTALLED. PLACE FITTING WITH EQUAL CLEARANCE AT EACH END, NOT MORE THAN 1/2".
 - WHEN A NEW SERVICE TEE/WYE IS INSTALLED, FLOWABLE FILL SHALL BE PLACED TO SPRING LINE OF WYE OR TEE ALL SIDES.

SERVICE TEE INSTALLATION
Not To Scale

The City of Enid
401 West Park, Enid, Oklahoma 73701
Telephone: (505) 234-8846 Fax: (505) 234-8846
Contacts:
Robert Hill, Director of Engineering Services, Est. 344
Jason Britney, Civil Engineer, Est. 348



REVISIONS	Number	Date	Description

Project Number: **TAPPING SADDLE AND SERVICE TEE / WYE INSTALLATION**
Project Location: **SWD - 4**

Sheet Title: **TAPPING SADDLE AND SERVICE TEE / WYE INSTALLATION**
Project Title: **SWD - 4**



Date: 6/1/00
Scale: NO SCALE
Cod File: G:\DATA\SPES\SW03-4
Drawn By: P.B./C.L.H.
Designed By: R.H.
Approved By: R.H.
Sheet: of