



City of Enid
401 W. Owen K. Garriott
P.O. Box 1768
Enid, Oklahoma 73702
580-234-0400

BOARD OF COMMISSIONERS

NOTICE OF REGULAR MEETING

Mayor and Board of Commissioners of the City of Enid, Oklahoma, the Trustees of the Enid Municipal Authority, a Public Trust, and the Trustees of the Enid Economic Development Authority, a Public Trust

Notice is hereby given that the Mayor and Board of Commissioners of the City of Enid, Oklahoma, the Trustees of the Enid Municipal Authority, a Public Trust, and the Trustees of the Enid Economic Development Authority, a Public Trust, will meet in regular session at 6:30 p.m. on the 5th day of February, 2013, in the Council Chambers of the City Administration Building, located at 401 W. Owen K. Garriott Road in said city, and the agenda for said meeting is as follows:

- AGENDA -

MAYOR AND BOARD OF COMMISSIONERS REGULAR MEETING

1. CALL TO ORDER/ROLL CALL.
2. INVOCATION.
3. FLAG SALUTE.
4. CONSIDER APPROVAL OF MINUTES OF THE REGULAR SESSION AGENDA OF JANUARY 15, 2013, AND SPECIAL SESSION AGENDA OF JANUARY 24, 2013.
5. AWARDS, PRESENTATIONS, AND ORGANIZATIONAL BUSINESS.
 - 5.1 PRESENT PET AVAILABLE FOR ADOPTION AT THE CITY ANIMAL SHELTER.
 - 5.2 PRESENTATION ON DOWNTOWN HOTEL DEVELOPMENT.

BACKGROUND: The City of Enid is pursuing options which are intended to culminate in construction of a downtown hotel. The facility will be constructed coincident with the Events Center and Convention Hall.

Options include parking facilities and retail development in the immediate area.

PRESENTER: Dave Owen and Dave Mashburn, LodgeWell Group, LLC.

6. HEARINGS.

6.1 CONDUCT A HEARING AMENDING THE ENID MUNICIPAL CODE, 2003, TITLE 11, ENTITLED "ZONING", CHAPTER 1, ENTITLED "PURPOSE; INTERPRETATION; DEFINITIONS," SECTION 11-1-7, ENTITLED "DEFINITIONS," TO ADD THE DEFINITION FOR TEMPORARY WORKFORCE HOUSING; AMENDING TITLE 11, ENTITLED "ZONING," CHAPTER 8, ENTITLED "INDUSTRIAL DISTRICTS," ARTICLE A, ENTITLED "I-1 PLANNED INDUSTRIAL PARK DISTRICT," SECTION 11-8A-4, ENTITLED "SUBMISSION OF DEVELOPMENT PLAN," BY ADDING THE REQUIREMENT FOR A DRAINAGE REPORT; AMENDING TITLE 11, ENTITLED "ZONING," CHAPTER 8, ENTITLED "INDUSTRIAL DISTRICTS," ARTICLE A, ENTITLED "I-1 PLANNED INDUSTRIAL PARK DISTRICT," SECTION 11-8A-5, ENTITLED "PERMITTED USES," TO ALLOW FOR TEMPORARY INDUSTRIAL WORKFORCE HOUSING; AMENDING TITLE 11, ENTITLED "ZONING," CHAPTER 8, ENTITLED "INDUSTRIAL DISTRICTS," ARTICLE B, ENTITLED "I-2 INDUSTRIAL (LIGHT) DISTRICT," SECTION 11-8B-3, ENTITLED "PERMITTED USES," TO ALLOW FOR TEMPORARY INDUSTRIAL WORKFORCE HOUSING; AMENDING TITLE 11, ENTITLED "ZONING," CHAPTER 8, ENTITLED "INDUSTRIAL DISTRICTS," ARTICLE B, ENTITLED "I-2 INDUSTRIAL (LIGHT) DISTRICT," SECTION 11-8B-2, ENTITLED "SUBMISSION OF A DEVELOPMENT PLAN," BY ADDING THE REQUIREMENT FOR A DRAINAGE REPORT; AMENDING TITLE 11, ENTITLED "ZONING," CHAPTER 8, ENTITLED "INDUSTRIAL DISTRICTS," ARTICLE C, ENTITLED "I-3 INDUSTRIAL (HEAVY) DISTRICT," SECTION 11-8C-2, ENTITLED "SUBMISSION OF A DEVELOPMENT PLAN," BY ADDING THE REQUIREMENT FOR A DRAINAGE REPORT; AMENDING TITLE 11, ENTITLED "ZONING," CHAPTER 8, ENTITLED "INDUSTRIAL DISTRICTS," ARTICLE C, ENTITLED "I-3 INDUSTRIAL (HEAVY) DISTRICT," SECTION 11-8C-3, ENTITLED "DISTRICT USE REGULATION," TO ALLOW FOR TEMPORARY INDUSTRIAL WORKFORCE HOUSING; AMENDING TITLE 11, ENTITLED "ZONING," CHAPTER 9, ENTITLED "SU SPECIAL USE DISTRICT," CHAPTER 2, ENTITLED "DISTRICT USE RELATIONS," AND ALLOW USE BY REVIEW FOR TEMPORARY WORKFORCE HOUSING; PROVIDING FOR REPEALER, SAVINGS CLAUSE, SEVERABILITY, AND CODIFICATION.

BACKGROUND: This is a companion to Item 7.1. This item amends the zoning ordinance to allow the temporary industrial work force housing park within industrial districts I-1, I-2, I-3, and permits a Use by Review in Special Use (SU) District. It addresses the need for temporary housing for a temporary labor force for the Mississippi oil play, and meets the requirements for a drainage report in industrial districts I-1, I-2 and I-3.

2012-2013 BUDGETED ITEM: Not applicable.

FUNDING SOURCE: Not applicable.

ATTACHMENTS: Ordinance.

RECOMMENDATION: Conduct hearing.

PRESENTER: Chris Bauer, Planning Administrator.

7. COMMUNITY DEVELOPMENT.

7.1 CONSIDER AN ORDINANCE AMENDING THE ENID MUNICIPAL CODE, 2003, TITLE 11, ENTITLED "ZONING", CHAPTER 1, ENTITLED "PURPOSE; INTERPRETATION; DEFINITIONS," SECTION 11-1-7, ENTITLED "DEFINITIONS," TO ADD THE DEFINITION FOR TEMPORARY WORKFORCE HOUSING; AMENDING TITLE 11, ENTITLED "ZONING," CHAPTER 8, ENTITLED "INDUSTRIAL DISTRICTS," ARTICLE A, ENTITLED "I-1 PLANNED INDUSTRIAL PARK DISTRICT," SECTION 11-8A-4, ENTITLED "SUBMISSION OF DEVELOPMENT PLAN," BY ADDING THE REQUIREMENT FOR A DRAINAGE REPORT; AMENDING TITLE 11, ENTITLED "ZONING," CHAPTER 8, ENTITLED "INDUSTRIAL DISTRICTS," ARTICLE A, ENTITLED "I-1 PLANNED INDUSTRIAL PARK DISTRICT," SECTION 11-8A-5, ENTITLED "PERMITTED USES," TO ALLOW FOR TEMPORARY INDUSTRIAL WORKFORCE HOUSING; AMENDING TITLE 11, ENTITLED "ZONING," CHAPTER 8, ENTITLED "INDUSTRIAL DISTRICTS," ARTICLE B, ENTITLED "I-2 INDUSTRIAL (LIGHT) DISTRICT," SECTION 11-8B-3, ENTITLED "PERMITTED USES," TO ALLOW FOR TEMPORARY INDUSTRIAL WORKFORCE HOUSING; AMENDING TITLE 11, ENTITLED "ZONING," CHAPTER 8, ENTITLED "INDUSTRIAL DISTRICTS," ARTICLE B, ENTITLED "I-2 INDUSTRIAL (LIGHT) DISTRICT," SECTION 11-8B-2, ENTITLED "SUBMISSION OF A DEVELOPMENT PLAN," BY ADDING THE REQUIREMENT FOR A DRAINAGE REPORT; AMENDING TITLE 11, ENTITLED "ZONING," CHAPTER 8, ENTITLED "INDUSTRIAL DISTRICTS," ARTICLE C, ENTITLED "I-3 INDUSTRIAL (HEAVY) DISTRICT," SECTION 11-8C-2, ENTITLED "SUBMISSION OF A DEVELOPMENT PLAN," BY ADDING THE REQUIREMENT FOR A DRAINAGE REPORT; AMENDING TITLE 11, ENTITLED "ZONING," CHAPTER 8, ENTITLED "INDUSTRIAL DISTRICTS," ARTICLE C, ENTITLED "I-3 INDUSTRIAL (HEAVY) DISTRICT," SECTION 11-8C-3, ENTITLED "DISTRICT USE REGULATION," TO ALLOW FOR TEMPORARY INDUSTRIAL WORKFORCE HOUSING; AMENDING TITLE 11, ENTITLED "ZONING," CHAPTER 9, ENTITLED "SU SPECIAL USE DISTRICT," CHAPTER 2, ENTITLED "DISTRICT USE RELATIONS," AND ALLOW USE BY REVIEW FOR TEMPORARY WORKFORCE HOUSING; PROVIDING FOR REPEALER, SAVINGS CLAUSE, SEVERABILITY, AND CODIFICATION.

BACKGROUND: This is a companion to Item 6.1. The Metropolitan Area Planning Commission unanimously recommended approval of the ordinance at its meeting on January 28, 2013.

2012-2013 BUDGETED ITEM: Not applicable.

FUNDING SOURCE: Not applicable.

ATTACHMENTS: Ordinance.

RECOMMENDATION: Approve Ordinance.

PRESENTER: Chris Bauer, Planning Administrator.

- 7.2 **CONSIDER AN EMERGENCY ORDINANCE ADDING TITLE 2, CHAPTER 6B, SECTIONS 2-6B-18B OF THE ENID MUNICIPAL CODE, 2003, FOR TEMPORARY INDUSTRIAL WORK FORCE HOUSING PARK FEES; PROVIDING FOR REPEALER, SAVINGS CLAUSE, SEVERABILITY, EFFECTIVE DATE, PENALTY, CODIFICATION, AND EMERGENCY.**

BACKGROUND: The City Commission adopted an Ordinance on December 4, 2012, that created building regulations for temporary industrial work force housing parks. The eight percent (8%) fee is based on the hotel tax and is payable monthly.

2012-2013 BUDGETED ITEM: Not applicable.

FUNDING SOURCE: Not applicable.

ATTACHMENTS: Ordinance.

RECOMMENDATION: Approve Ordinance.

PRESENTER: Chris Bauer, Planning Administrator.

8. **ADMINISTRATION.**

- 8.1 **CONSIDER AN ORDINANCE AMENDING SECTION 6-1-4, SECURITY VERIFICATION FORM, OF THE ENID MUNICIPAL CODE, 2003.**

BACKGROUND: This ordinance was reviewed by the City Commission at the January 15, 2013, Study Session.

This ordinance will add and amend language so that the City's Code mirrors State Law. Language has been added to 6-1-4B, which mirrors 47 O.S. § 7-601. A change has been made to 6-1-B3 to reflect a change in State law. Effective May 8, 2012, a report of any conviction for "no insurance" must be reported to DPS within five (5) days rather than ten (10). We also

removed exceptions from 6-1-4D which are not found in State law, and added an exception which is found in State law.

2012-2013 BUDGETED ITEM: Not applicable.

FUNDING SOURCE: Not applicable.

ATTACHMENTS: Ordinance.

RECOMMENDATION: Approve Ordinance.

PRESENTER: Andrea Springer, City Attorney.

8.2 CONSIDER AN ORDINANCE AMENDING SECTION 6-1-11, SCHOOL ZONES, OF THE ENID MUNICIPAL CODE, 2003.

BACKGROUND: This ordinance was reviewed by the City Commission at the January 15, 2013, Study Session.

This ordinance will add a subsection to Section 6-1-11 of the Enid Municipal Code, 2003. The subsection adds language pertaining to a violation of "Speeding in a School Zone," and the fines available for the offense. There is no change to the amount of the fine or the speed limits.

2012-2013 BUDGETED ITEM: Not applicable.

FUNDING SOURCE: Not applicable.

ATTACHMENTS: Ordinance.

RECOMMENDATION: Approve Ordinance.

PRESENTER: Andrea Springer, City Attorney.

8.3 CONSIDER AN AGREEMENT WITH TETRA TECH, INC., OKLAHOMA CITY, OKLAHOMA, FOR DESIGN OF THE CLEVELAND STREET AND CHESTNUT AVENUE INTERSECTION IMPROVEMENT, PROJECT NO. R-1311A.

BACKGROUND: Engineering services are necessary to design improvement plans to reconstruct and widen the Cleveland Street and Chestnut Avenue intersection. A traffic study, right-of-way determination, and coordination of utility relocation will be included.

The City of Enid solicited five (5) qualified firms for these services, and received four (4) proposals. State law requires that contracts for Professional Engineering Services over \$50,000.00 in value be based on negotiations after the selection based on qualifications. Tetra Tech, Inc. was selected and will provide right-of-way acquisition services and act as

the City's agent in securing additional right-of-way needed to construct the project. A contract has been negotiated with Tetra Tech, Inc. in an amount not to exceed \$245,000.00.

The total cost of the project is \$2,600,000.00, and \$750,000.00 will be funded by the Oklahoma Department of Transportation.

2012-2013 BUDGETED ITEM: Yes.

FUNDING SOURCE: Capital Improvement Fund.

ATTACHMENTS: None. Agreement is on file in the Office of the City Clerk.

RECOMMENDATION: Approve agreement.

PRESENTER: Robert Hitt, P.E., Director of Engineering Services.

8.4 ACCEPT AND APPROVE THE JUNE 30, 2012, INDEPENDENT AUDITOR'S REPORT ON THE FINANCIAL STATEMENTS OF THE CITY OF ENID, OKLAHOMA, AND ITS RELATED AUTHORITIES.

BACKGROUND: This is a companion to Items 12.1 and 15.1. Ronald C. Cottrell, CPA, has completed the annual independent audit for the Fiscal Year ended June 30, 2012. Oklahoma law and various federal and state agencies for which the City of Enid receives grants require an annual financial audit. The financial statements provide the users (Mayor, Commissioners, City Manager, Staff, Citizens, Bond Holders, Creditors, Regulators, etc.) with valuable information concerning the City of Enid's financial condition. The audit gives reasonable assurance to these users that the financial statements are correct and free of material misstatement.

2012-2013 BUDGETED ITEM: Not applicable.

FUNDING SOURCE: Not applicable.

ATTACHMENTS: None. Independent Auditor's Report and Financial Statements, Management's Discussion and Analysis, and the Single Audit Report are on file in the Office of the City Clerk, and the Trustees have each been provided a copy for review and approval.

RECOMMENDATION: Accept and approve the audit.

PRESENTER: Jerald Gilbert, Chief Financial Officer.

9. CONSENT.

9.1 APPROVE CHANGE ORDER NO. 1 WITH C.P. INTEGRATED SERVICES, INC., OKLAHOMA CITY, OKLAHOMA, FOR AIP 3-40-0028-25-2012, CONSTRUCT DRAINAGE IMPROVEMENTS AT ENID WOODRING REGIONAL AIRPORT.

BACKGROUND: This project will repair and improve drainage of Woodring Regional Airport's southeast parking apron by removing and replacing the storm sewer pipes. C-P Integrated Services, Inc. was awarded the contract through competitive bids.

Change Order No. 1 will replace deteriorated concrete panels that cause foreign object problems in the southeast parking apron area. These panels are in the vicinity of the current project, and it is economical to have this contractor do the work at the current bid prices than to rebid as a separate project at a later date. Repair cost is \$9,314.45 and will be funded by the Airport Fund. The Federal Aviation Administration Grant AIP 3-40-0028-25-2012 will fund 90% of the \$220,584.00 project cost.

2012-2013 BUDGETED ITEM: Yes.

FUNDING SOURCE: Airport Fund.

ATTACHMENTS: None. Change Order No. 1 is on file in the Office of the City Clerk.

RECOMMENDATION: Approve Change Order No. 1.

PRESENTER: Dan Ohnesorge, Airport Director.

9.2 ACCEPT A DEDICATION DEED FOR PUBLIC HIGHWAY FROM DACE FARMS, LLC, OKLAHOMA CITY, OKLAHOMA, FOR THE 42ND STREET AND BOGGY CREEK BRIDGE, PROJECT NO. R-1108.

BACKGROUND: This dedication deed will provide additional right-of-way along 42nd Street, south of Market Avenue, which is required to construct a new bridge over Boggy Creek. The cost of this right-of-way is \$1,167.50.

2012-2013 BUDGETED ITEM: Yes.

FUNDING SOURCE: Capital Improvement Fund.

ATTACHMENTS: Location Map. Dedication deed is on file in the Office of the City Clerk.

RECOMMENDATION: Accept the dedication deed.

PRESENTER: Robert Hitt, P.E., Director of Engineering Services.

9.3 ACCEPT A DEDICATION DEED FOR PUBLIC HIGHWAY FROM GOLDEN PARTNERS PROPERTIES, LLC, FOR THE WAL-MART ACCESS ROAD MODIFICATION, R-1201A.

BACKGROUND: This dedication deed for public highway will provide additional right-of-way on the access road in front of Wal-Mart between the Highway Patrol Station and Golden Chick Restaurant. It is required to widen the access road to allow for truck turning movements onto Garriott Road. The right-of-way is being donated by Golden Partners Properties, LLC.

2012-2013 BUDGETED ITEM: Not applicable.

FUNDING SOURCE: Not applicable.

ATTACHMENTS: Location Map. Dedication deed is on file in the Office of the City Clerk.

RECOMMENDATION: Accept the dedication deed for public highway.

PRESENTER: Robert Hitt, P.E., Director of Engineering Services.

9.4 ACCEPT OKLAHOMA DEPARTMENT OF ENVIRONMENTAL QUALITY CONSTRUCTION PERMIT FOR SANITARY SEWER CONSTRUCTION TO SERVE THE NEW CVS PHARMACY ON VAN BUREN AND GARRIOTT ROAD, S-1313A.

BACKGROUND: The Oklahoma Department of Environmental Quality (ODEQ) approved a permit to construct 223 linear feet 15-inch, and 114 linear feet of 8-inch PVC sanitary sewer lines to serve the new CVS Pharmacy on Van Buren & Garriott Road, Garfield County, Oklahoma.

Upon required acceptance of Permit No. SL000024120939, it will be recorded as permanent record.

2012-2013 BUDGETED ITEM: Not applicable.

FUNDING SOURCE: Not applicable.

ATTACHMENTS: None. Permit is on file in the Office of the City Clerk.

RECOMMENDATION: Accept ODEQ Permit.

PRESENTER: Robert Hitt, P.E., Director of Engineering Services.

9.5 ACCEPT A 35-FOOT WIDE UTILITY EASEMENT FROM KENNETH P. MAY AND MARY J. MAY, OKLAHOMA CITY, OKLAHOMA, PROJECT NO. W-0906A.

BACKGROUND: This item will accept a 35-foot utility easement covering the proposed extension of a raw water collection line in Cleo Springs, in the southwest quarter of Section 2, Township 22 North, Range 12 West of the Indian Meridian, Garfield Country, Oklahoma. The cost of the easement is \$4,196.00, of which \$1,446.00 is for damages, \$500.00 for a production well site, and \$2,250.00 for the utility easement.

The easement allows for connection of a new well site, and per the water rights agreement, allows for developing new well sites.

2012-2013 BUDGETED ITEM: Yes.

FUNDING SOURCE: Water Capital Improvement Fund.

ATTACHMENTS: None. Utility easement is on file in the Office of the City Clerk.

RECOMMENDATION: Accept utility easement.

PRESENTER: Robert Hitt, P.E., Director of Engineering Services.

9.6 ACCEPT A 35-FOOT WIDE UTILITY EASEMENT FROM L. MIKE ELLIOTT, CLEO SPRINGS, OKLAHOMA, PROJECT NO. W-0906A.

BACKGROUND: This item will accept a 35-foot utility easement covering the proposed extension of a raw water collection line in Cleo Springs, in the northwest quarter of Section 11, Township 22 North, Range 12 West of the Indian Meridian, Garfield County, Oklahoma. The total cost of this easement is \$853.50, of which \$487.50 is for damages, and \$366.00 is for utility easement.

This easement allows for connection of a new well site, and per the water rights agreement, allows for developing new well sites.

2012-2013 BUDGETED ITEM: Yes.

FUNDING SOURCE: Water Capital Improvement Fund.

ATTACHMENTS: None. Utility easement is on file in the Office of the City Clerk.

RECOMMENDATION: Accept utility easement.

PRESENTER: Robert Hitt, P.E., Director of Engineering Services.

9.7 APPROVE CHANGE ORDER NO. 3 WITH LAYNE CHRISTENSEN COMPANY, OKLAHOMA CITY, OKLAHOMA, FOR THE WELL REPLACEMENT PROGRAM, W-0906A.

BACKGROUND: Change Order No. 3 will add a total of eleven (11) test wells. Six (6) test well sites will be located in the Cleo Springs area, and five (5) in Enid's well field vicinity.

This change order will add \$103,000.00 to the contract for a revised total amount of \$1,291,812.00.

2012-2013 BUDGETED ITEM: Yes.

FUNDING SOURCE: Water Capital Improvement Fund.

ATTACHMENTS: Location Maps. Change Order No. 3 is on file in the Office of the City Clerk.

RECOMMENDATION: Approve Change Order No. 3.

PRESENTER: Robert Hitt, P.E., Director of Engineering Services.

9.8 **ACCEPT OKLAHOMA DEPARTMENT OF ENVIRONMENTAL QUALITY CONSTRUCTION PERMIT FOR VAN BUREN STREET WATERLINE EXTENSION, W-1105A.**

BACKGROUND: The Oklahoma Department of Environmental Quality (ODEQ) approved a Permit to Construct 4,169 linear feet of 18-inch ductile iron pipe. This portion of the project will extend the waterline from Kesterfield Boulevard to Rupe Avenue.

Upon required acceptance of Permit No. WW000024120936, it will be recorded as permanent record.

2012-2013 BUDGETED ITEM: Not applicable.

FUNDING SOURCE: Not applicable.

ATTACHMENTS: None. Permit is on file in the Office of the City Clerk.

RECOMMENDATION: Accept ODEQ Permit.

PRESENTER: Robert Hitt, P.E., Director of Engineering Services.

9.9 **APPROVE CHANGE ORDER NO. 1 WITH MATTHEW'S TRENCHING COMPANY, INC., OKLAHOMA CITY, OKLAHOMA, AND ACCEPT THE DOWNTOWN RENAISSANCE WATERLINE RELOCATIONS PROJECT NO. W-1205A.**

BACKGROUND: This project relocated the waterline on Grand Avenue from Owen K. Garriott Road to Main Street, and relocated the waterline on Independence Avenue from Oklahoma Avenue to Main Street.

Change Order No. 1 in the amount of \$6,988.00, adjusts final quantities in place for a total revised contract amount of \$675,998.00.

This project is complete and has a three (3) year Maintenance Bond.

2012-2013 BUDGETED ITEM: Yes.

FUNDING SOURCE: Water Capital Improvement Fund.

ATTACHMENTS: None. Change Order No. 1 is on file in the Office of the City Clerk.

RECOMMENDATION: Approve Change Order No. 1, and accept the project.

PRESENTER: Robert Hitt, P.E., Director of Engineering Services.

- 9.10 **AWARD A CONTRACT TO GOINS ENTERPRISES INC., JOPLIN, MISSOURI, FOR CONSTRUCTION OF THE 2012 COPPER REMOVAL PROGRAM, PHASE 1, PROJECT NO. W-1301A, AND AUTHORIZE THE MAYOR TO EXECUTE ALL CONTRACT DOCUMENTS AFTER REVIEW BY THE CITY ATTORNEY.**

BACKGROUND: The goal of this pilot program is to reduce the concentration of copper contaminants in the sewer system to comply with the Oklahoma Department of Environmental Quality's (ODEQ) Consent Order to address copper leaching. Work will involve replacing existing copper service lines from water main to water meter with poly pipe.

Three (3) areas were chosen to be monitored for copper leach based on year built: Cedar Ridge, The Meadows, and Heritage Hills subdivisions. Heritage Hills subdivision was selected for Phase I based on the amount of concentration.

This project was bid with a base bid and one (1) alternate. The Base Bid includes replacing 140 existing copper service lines with poly pipe from water main to water meter, and Alternate No. 1 adds 100 service connections.

Five (5) bids were received. Goins Enterprises, Inc. submitted the lowest Base Bid amount of \$154,350.00 and Alternate No. 1 of \$95,550.00 for a total contract amount of \$249,900.00.

2012-2013 BUDGETED ITEM: Yes.

FUNDING SOURCE: Capital Improvement Fund.

ATTACHMENTS: Canvass of Bids.

RECOMMENDATION: Award contract to Goins Enterprises, Inc.

PRESENTER: Robert Hitt, P.E., Director of Engineering Services.

9.11 APPROVAL OF CLAIMS IN THE AMOUNT OF \$1,402,425.38.

ATTACHMENTS: List of claims.

10. RECESS TO CONVENE AS THE ENID MUNICIPAL AUTHORITY.

11. TRUSTEES OF THE ENID MUNICIPAL AUTHORITY REGULAR MEETING.

12. ENID MUNICIPAL AUTHORITY REGULAR MEETING.

12.1 ACCEPT AND APPROVE THE JUNE 30, 2012, INDEPENDENT AUDITOR'S REPORT ON THE FINANCIAL STATEMENTS OF THE ENID MUNICIPAL AUTHORITY.

BACKGROUND: This is a companion to Items 8.4 and 15.1.

2012-2013 BUDGETED ITEM: Not applicable.

FUNDING SOURCE: Not applicable.

ATTACHMENTS: None. Independent Auditor's Report and Financial Statements, Management's Discussion and Analysis, and the Single Audit Report are on file in the Office of the City Clerk, and the Trustees have each been provided a copy for review and approval.

RECOMMENDATION: Accept and approve the audit.

PRESENTER: Jerald Gilbert, Chief Financial Officer.

12.2 APPROVAL OF CLAIMS IN THE AMOUNT OF \$208,199.15.

ATTACHMENTS: List of claims.

13. ADJOURN TO CONVENE AS THE ENID ECONOMIC DEVELOPMENT AUTHORITY.

14. TRUSTEES OF THE ENID ECONOMIC DEVELOPMENT AUTHORITY REGULAR MEETING.

15. ENID ECONOMIC DEVELOPMENT AUTHORITY REGULAR MEETING.

15.1 ACCEPT AND APPROVE THE JUNE 30, 2012, INDEPENDENT AUDITOR'S REPORT ON THE FINANCIAL STATEMENTS OF THE ENID ECONOMIC DEVELOPMENT AUTHORITY.

BACKGROUND: This is a companion to Items 8.4 and 12.1.

2012-2013 BUDGETED ITEM: Not applicable.

FUNDING SOURCE: Not applicable.

ATTACHMENTS: None. Independent Auditor's Report and Financial Statements, Management's Discussion and Analysis, and the Single Audit Report are on file in the Office of the City Clerk, and the Trustees have each been provided a copy for review and approval.

RECOMMENDATION: Accept and approve the audit.

PRESENTER: Jerald Gilbert, Chief Financial Officer.

15.2 APPROVAL OF CLAIMS IN THE AMOUNT OF \$498,269.32.

ATTACHMENTS: List of Claims.

16. ADJOURN TO RECONVENE AS THE ENID CITY COMMISSION.

17. PUBLIC DISCUSSION.

18. CONSIDER CONVENING INTO EXECUTIVE SESSION TO DISCUSS ECONOMIC DEVELOPMENT AND TO RECONVENE INTO REGULAR SESSION TO TAKE ANY NECESSARY ACTION.

BACKGROUND: The City Attorney recommends the Mayor and Board of Commissioners go into Executive Session pursuant to 25 Okla. Stat. §307(C)(10), to discuss "matters pertaining to economic development, including the transfer of property, financing, or the creation of a proposal to entice a business to remain or to locate within their jurisdiction" because public disclosure would violate the confidentiality of the businesses involved.

19. ADJOURN.

MINUTES OF REGULAR MEETING OF
MAYOR AND BOARD OF COMMISSIONERS OF THE CITY OF ENID, OKLAHOMA,
TRUSTEES OF THE ENID MUNICIPAL AUTHORITY, A PUBLIC TRUST, AND
TRUSTEES OF THE ENID ECONOMIC DEVELOPMENT AUTHORITY, A PUBLIC TRUST
HELD ON THE 15TH DAY OF JANUARY 2013

The Mayor and Board of Commissioners of the City of Enid, County of Garfield, State of Oklahoma, the Trustees of the Enid Municipal Authority, a Public Trust, and the Trustees of the Enid Economic Development Authority, a Public Trust, met in regular meeting in the Council Chambers of the Administration Building of the City of Enid, located at 401 West Owen K. Garriott Road in said city, at 6:30 P.M. on the 15th day of January 2013, pursuant to notice given by December 15, 2012 to the Clerk of the City of Enid, and pursuant to notice thereof displayed at the entrance to the Administration Building of said city, in prominent view and which notice was posted prior to 5:00 P.M. on the 14th day of January 2013.

-MAYOR AND BOARD OF COMMISSIONERS-

Mayor Shewey called the meeting to order with the following members present and absent:

PRESENT: Commissioners Janzen, Stuber, Ritchie, Wilson and Mayor Shewey.

ABSENT: Commissioners Blackburn and Ging.

Staff present were Assistant City Manager Joan Riley, City Clerk Linda Parks, Engineering Director Robert Hitt, Finance Director Jerald Gilbert, Planning Administrator Chris Bauer, Human Resource Director Sonya Key, Police Chief Brian O'Rourke, Safety Director Billy McBride, Director of Aviation Dan Ohnesorge, Steve Kime, Director of Marketing and Public Relations, Whitney Box, Director of Strategic and Long Term Planning, and Ex-Officio member Col. Darren James.

The Invocation was given by Pastor Kevin Ward from Central Assembly of God Church, and the Flag Salute was led by Assistant City Attorney Jennifer O'Steen.

Motion was made by Commissioner Ritchie and seconded by Commissioner Janzen to approve the minutes of the regular Commission meeting of December 4, 2012, and special meetings of December 20 and 27, 2012, and the vote was as follows:

AYE: Commissioners Janzen, Stuber, Ritchie, Wilson and Mayor Shewey.

NAY: None.

Mr. Jared Free presented "Nikki", a three-month old female Shepherd Pit mix, available for adoption at the Enid Animal Shelter.

A proclamation was read and presented proclaiming the month of January 2013 as "Stalking Awareness Month."

Captain Jack Morris and officers Ryan Fuksa and Chris Bouziden recognized K-9 Officer Justin Lamle and retired K-9 Officer Thor.

Commissioner Ging arrived at 6:41 P.M. and sat in for the remainder of the proceedings.

A hearing was held regarding a proposed amendment to the Land Use Map for property described as part of the East Half of the Southeast Quarter of Section 2, Township 22 North, Range 7 West of the Indian Meridian, Garfield County, Oklahoma, from Low Intensity Residential Designation to Medium Intensity Commercial Designation. It was noted that the Metropolitan Area Planning Commission, at its meeting of December 17, 2012, unanimously recommended approval of the proposed amendment.

Planning Official Chris Bauer spoke regarding the land use change, noting that if approved, the property, located at the northwest corner of Chestnut Avenue and Cleveland Street, would be developed into neighborhood offices and/or retail uses. He stated that the proposed amendment was consistent with the overall intent of the 2025 Comprehensive Plan, which identified the location as a medium intensity Community Commercial Node 2 (CCN2), a 30-acre node with approximately 7.5 acres on each corner. He stated that the land use change would increase the northwest corner of the existing CCN2 from 7.5 acres to 16.09 acres, which would support the rezoning of the property from “R-2” Single Family Residential District to “C-2” Planned Business Center District.

The proposed Rolling Acres detention site to be located on the north end of the Stonebridge property was addressed by Mr. Bauer. He stated that the City of Enid was considering acquiring approximately 27 acres east of Cleveland Street and south of the railroad tracks for the site, noting that land acquisition was scheduled in Fiscal Year 2012-2013, with construction of Phase I scheduled in Fiscal Year 2013-2014.

Mr. Bauer advised commissioners that to support CCN2 development, improvements would be required at the intersection of Cleveland Street and Chestnut Avenue. He stated that the City of Enid and the Oklahoma Department of Transportation would cost share the improvements. He noted that the City of Enid’s share to improve the intersection was estimated at \$1,000,000, with the Stonebridge developer responsible for 25% of the City’s costs for said improvements. He went on to say that design of the intersection improvements was scheduled in Fiscal Year 2012-2013, and with construction was scheduled in Fiscal Year 2014-2015.

In conclusion, Mr. Bauer stated that to meet Transportation Plan requirements, acceleration and deceleration lanes would be required at Cleveland Street and Chestnut Avenue entrances. He stated that Cleveland Street from Maple Avenue to Chestnut Avenue was scheduled to be widened in Fiscal Year 2017-2018, and that Cleveland Street from Chestnut Avenue to one-half mile north was scheduled to be

widened in Fiscal Year 2020-2021. However, he noted that the order could be changed to accommodate the proposed Stonebridge development.

Mr. Glen Julian, 1302 Quailwood, addressed the Commission. He asked commissioners to deny the land use change which would increase the northwest corner of the existing CCN2 from 7.5 acres to 16.09 acres. He also cited concerns regarding additional noise, traffic and lighting issues if the development was approved.

Mr. Dale Denton, 2409 West Chestnut, addressed the Commission. He stated that he was not opposed to the proposed development. However, he asked that regulations requiring on-site detention be followed, and that design standards for lighting be required to ensure that glare from lighting was not excessive.

Comments were received from Ms. Linda Record, 1802 Quailwood. She asked that flooding and drainage issues be resolved before the proposed development began.

Following brief comments from the Commission, the hearing concluded.

A hearing was held regarding the rezoning of property located at the northwest corner of West Chestnut Avenue and North Cleveland Street, described as a part of the East Half of the Southeast Quarter of Section 2, Township 22 North, Range 7 West of the Indian Meridian, Garfield County, Oklahoma, from "R-2" Single Family Residential District to "C-2" Planned Business Center District. It was noted that the Metropolitan Area Planning Commission, at its meeting of December 17, 2012, unanimously recommended approval of the rezoning.

No comments were received.

A hearing was held regarding a request to close a portion of 4th Street between Lot 1, Block 2, and Lot 12, Block 1, Southern Heights Addition, lying in the Northeast Quarter of Section 18, Township 22 North, Range 6 West of the Indian Meridian, Garfield County, Oklahoma. It was noted that the

Metropolitan Area Planning Commission, at its meeting of December 17, 2012, unanimously recommended approval to close said street as requested.

Director of Engineering Robert Hitt stated that this portion of 4th Street was previously closed to allow realignment of Leona Mitchell Boulevard at a controlled signalized intersection. He added that this request would complete the formal closing process, and permit integration of the vacant land for stormwater mitigation for new development.

No comments were received.

A hearing was held regarding the proposed creation of Tax Increment Financing (TIF) District No. 6 for the proposed Northstar canola processing plant.

It was noted that Commissioner Ritchie left the meeting during the public hearing.

Attorney Nate Ellis from The Public Finance Law Group, PLLC, stated that this was the second of two (2) required public hearings regarding the TIF District. He noted that both the Tax Increment Finance Review Committee and the Metropolitan Area Planning Commission recommended approval of the TIF at their meetings of December 21, 2012, and January 7, 2013, respectively.

No comments were received.

Motion was made by Commissioner Stuber and seconded by Commissioner Janzen to approve a resolution amending the Land Use Map from Low Intensity Residential Designation to Medium Intensity Commercial Designation for property located at the northwest corner of Chestnut Avenue and Cleveland Street, known as the East Half of the Southeast Quarter of Section 2, Township 22 North, Range 7 West of the Indian Meridian, Garfield County, Oklahoma, and the vote was as follows:

AYE: Commissioners Janzen, Stuber, Wilson, Ging and Mayor Shewey.

NAY: None.

Commissioner Ritchie absent from vote.

(Copy Resolution)

Commissioner Ritchie returned at 7:06 P.M. and sat in for the remainder of the proceedings.

Motion was made by Commissioner Stuber and seconded by Commissioner Janzen to adopt an ordinance rezoning property located at the northwest corner of Chestnut Avenue and Cleveland Street, known as the East Half of the Southeast Quarter of Section 2, Township 22 North, Range 7 West of the Indian Meridian, Garfield County, Oklahoma, from Class "R-2" Single Family Residential District to "C-2" Planned Business Center District, and the vote was as follows:

AYE: Commissioners Janzen, Stuber, Ritchie, Wilson, Ging and Mayor Shewey.

NAY: None.

ORDINANCE NO. 2013-1

AN ORDINANCE AMENDING TITLE 11 CHAPTER 2, SECTION 11-2-1 OF THE ENID MUNICIPAL CODE, 2003, BY CHANGING THE ZONING ON A CERTAIN PROPERTY AND DESCRIBING THE SAME, AMENDING THE ZONING MAP ACCORDINGLY.

Motion was made by Commissioner Ritchie and seconded by Commissioner Stuber to adopt an ordinance closing a portion of 4th Street between Lot 1, Block 2, and Lot 12, Block 1, Southern Heights Addition, lying in the Northeast Quarter of Section 18, Township 22 North, Range 6 West of the Indian Meridian, Garfield County, Oklahoma, and the vote was as follows:

AYE: Commissioners Janzen, Stuber, Ritchie, Wilson, Ging and Mayor Shewey.

NAY: None.

ORDINANCE NO. 2013-2

AN ORDINANCE CLOSING TO THE PUBLIC A PORTION OF 4TH STREET BETWEEN LOT 1, BLOCK 2 AND LOT 12, BLOCK 1, SOUTHERN HEIGHTS ADDITION, LYING IN THE NORTHEAST QUARTER (NE/4) OF SECTION EIGHTEEN (18), TOWNSHIP TWENTY-TWO (22) NORTH, RANGE SIX (6) WEST OF THE INDIAN MERIDIAN, GARFIELD COUNTY, OKLAHOMA.

Motion was made by Commissioner Ritchie and seconded by Commissioner Stuber to adopt an ordinance approving utilization of apportioned tax revenues authorized by statewide vote adopting Article 10, Section 6C of the Oklahoma Constitution and implemented by the Local Development Act, 62 O.S. §850, et seq.; approving and adopting the Northstar Economic Development Project Plan and expressing intent to carry out the project plan; ratifying and confirming the actions, recommendations and findings of the Review Committee and the Metropolitan Area Planning Commission; creating and establishing Increment District No. 6, City of Enid; designating and adopting the increment district boundaries and the project area boundaries; adopting certain findings; reserving to the City of Enid, Oklahoma, the authority to make minor amendments to the Project Plan; authorizing the Mayor and Board of Commissioners of the City of Enid, Oklahoma to carry out and administer the Project Plan; establishing a Tax Apportionment Fund; authorizing directions for prospective apportionment of tax increments; establishing an allocation of use for tax increments; declaring apportionment funds to be funds of the City and limiting the pledge of apportioned increments to increments actually apportioned by the City; authorizing the Mayor and Board of Commissioners of the City of Enid, Oklahoma, or a public trust designated thereby, to implement the Project Plan utilizing apportioned tax increments to pay or reimburse project costs directly and/or to issue bonds or notes, if feasible and desirable, to pay project costs and to retire said bonds or notes from apportioned tax increments; providing for severability; declaring an emergency; and containing other provisions related thereto, and the vote was as follows:

AYE: Commissioners Janzen, Stuber, Ritchie, Wilson, Ging and Mayor Shewey.

NAY: None.

Thereupon, Commissioner Ritchie moved that the Emergency Section of said ordinance be approved, which motion was seconded by Commissioner Stuber, and the vote was as follows:

AYE: Commissioners Janzen, Stuber, Ritchie, Wilson, Ging and Mayor Shewey.

NAY: None.

ORDINANCE NO. 2013-3

AN ORDINANCE APPROVING UTILIZATION OF APPORTIONED TAX REVENUES AUTHORIZED BY STATEWIDE VOTE ADOPTING ARTICLE 10, SECTION 6C OF THE OKLAHOMA CONSTITUTION AND IMPLEMENTED BY THE LOCAL DEVELOPMENT ACT, 62 O.S. §850, ET SEQ.; APPROVING AND ADOPTING THE NORTHSTAR ECONOMIC DEVELOPMENT PROJECT PLAN AND EXPRESSING INTENT TO CARRY OUT THE PROJECT PLAN; RATIFYING AND CONFIRMING THE ACTIONS, RECOMMENDATIONS AND FINDINGS OF THE REVIEW COMMITTEE AND THE METROPOLITAN AREA PLANNING COMMISSION; CREATING AND ESTABLISHING INCREMENT DISTRICT NO. 6, CITY OF ENID; DESIGNATING AND ADOPTING THE INCREMENT DISTRICT BOUNDARIES AND THE PROJECT AREA BOUNDARIES; ADOPTING CERTAIN FINDINGS; RESERVING TO THE CITY OF ENID, OKLAHOMA, THE AUTHORITY TO MAKE MINOR AMENDMENTS TO THE PROJECT PLAN; AUTHORIZING THE MAYOR AND BOARD OF COMMISSIONERS OF THE CITY OF ENID, OKLAHOMA TO CARRY OUT AND ADMINISTER THE PROJECT PLAN; ESTABLISHING A TAX APPORTIONMENT FUND; AUTHORIZING DIRECTIONS FOR PROSPECTIVE APPORTIONMENT OF TAX INCREMENTS; ESTABLISHING AN ALLOCATION OF USE FOR TAX INCREMENTS; DECLARING APPORTIONMENT FUNDS TO BE FUNDS OF THE CITY AND LIMITING THE PLEDGE OF APPORTIONED INCREMENTS TO INCREMENTS ACTUALLY APPORTIONED BY THE CITY; AUTHORIZING THE MAYOR AND BOARD OF COMMISSIONERS OF THE CITY OF ENID, OKLAHOMA, OR A PUBLIC TRUST DESIGNATED THEREBY, TO IMPLEMENT THE PROJECT PLAN UTILIZING APPORTIONED TAX INCREMENTS TO PAY OR REIMBURSE PROJECT COSTS DIRECTLY AND/OR TO ISSUE BONDS OR NOTES, IF FEASIBLE AND DESIRABLE, TO PAY PROJECT COSTS AND TO RETIRE SAID BONDS OR NOTES FROM APPORTIONED TAX INCREMENTS; PROVIDING FOR SEVERABILITY; DECLARING AN EMERGENCY; AND CONTAINING OTHER PROVISIONS RELATED THERETO.

It was noted that Commissioner Stuber left the meeting at 7:11 P.M.

Motion was made by Commissioner Ritchie and seconded by Commissioner Wilson to approve a resolution increasing the 2012-2013 Capital Improvement Fund Budget by appropriating additional funds in the amount of \$66,196.90 to fund Amendment No. 4 with Convergence Design for additional

Construction Administration Fees with respect to the Event Center and Convention Hall Renovation projects, and to fund Change Order No. 1 with Chickasaw Telecom, Inc. for additional routing software required to complete the hardwiring system for Convention Hall and the new Event Center, and the vote was as follows:

AYE: Commissioners Janzen, Ritchie, Wilson, Ging and Mayor Shewey.

NAY: None.

(Copy Resolution)

Motion was made by Commissioner Ritchie and seconded by Commissioner Janzen to approve a resolution amending the 2012-2013 Capital Improvement Fund Budget by appropriating additional funds in the amount of \$83,000.00, to fund construction of the Meadowlake Carousel House Project, and the vote was as follows:

AYE: Commissioners Janzen, Ritchie, Wilson, Ging and Mayor Shewey.

NAY: None.

(Copy Resolution)

Discussion was held regarding a contract award for Project M-1206A, Cleveland Street Trailhead. It was noted that the lowest responsible bid was submitted by Henson Construction Company, Enid, Oklahoma, with a base bid of \$312,242.00, and Alternates No. 1, 2 and 3, in the amounts of \$2,000.00, \$37,000.00, and \$67,000.00 respectively. It was further noted that staff's recommendation was to award said contract to Henson Construction Company for the Base Bid and Alternate No. 2, installation of adult exercise equipment, in the amount of \$349,242.00.

Motion was made by Commissioner Ritchie and seconded by Commissioner Wilson to award said contract to Henson Construction Company for the Base Bid and Alternate No. 2 in the amount of

\$349,242.00, and authorize the Mayor to execute all contract documents after review by the City Attorney.

Commissioner Janzen questioned the cost of Alternate No. 2, installation of adult exercise equipment. He asked that the Alternate be excluded from the contract award, and that the equipment be added at a later date.

Following further discussion, the vote was taken as follows:

AYE: Commissioners Ritchie, Wilson and Mayor Shewey.

NAY: Commissioners Janzen and Ging.

Motion was made by Commissioner Janzen and seconded by Commissioner Ritchie to approve a resolution authorizing the Mayor to enter into an agreement with the Oklahoma Department of Transportation to improve the railroad crossing at Independence Avenue, south of Chestnut Avenue, Project No. R-1313A, and the vote was as follows:

AYE: Commissioners Janzen, Ritchie, Wilson, Ging and Mayor Shewey.

NAY: None.

(Copy Resolution)

Motion was made by Commissioner Ritchie and seconded by Commissioner Janzen to approve a resolution authorizing the Mayor to enter into an agreement with the Oklahoma Department of Transportation to improve the railroad crossing at 42nd Street, south of Chestnut Avenue, Project No. R-1314A, and the vote was as follows:

AYE: Commissioners Janzen, Ritchie, Wilson, Ging and Mayor Shewey.

NAY: None.

(Copy Resolution)

Motion was made by Commissioner Ritchie and seconded by Commissioner Janzen to approve an Agreement for Professional Services for Project No. S-1303A, Wastewater Treatment Plant Advanced Treatment Feasibility Analysis, with the firm of Alan Plummer Associates, Inc., Fort Worth, Texas, in an amount not to exceed \$75,000.00, and the vote was as follows:

AYE: Commissioners Janzen, Ritchie, Wilson, Ging and Mayor Shewey.

NAY: None.

Discussion was held regarding the purchase of playground equipment and professional services for Champion Park, from Child's Play, Inc., Dallas, Texas.

Ms. Whitney Box, Director of Marketing and Public Relations, made a brief presentation regarding the purchase. She stated that Child's Play, Inc. had agreed to honor its 2012 pricing without the use of a purchasing cooperative, at a cost of \$262,449.00, plus \$15,000.00 for supervision to install the equipment. She went on to say that because the installation of the equipment would be a community build, incorporating the citizens of Enid to install the equipment instead of a contractor, an overall savings of 37.73% off the retail price for the equipment and installation would be realized. She added that because Child's Play, Inc. had offered the City of Enid a discounted price, staff was recommending that the bidding process be waived, and that the purchase of said equipment and professional services be approved.

Motion was made by Commissioner Ritchie and seconded by Commissioner Ging to waive bidding requirements, and approve the purchase of playground equipment and professional services for Champion Park from Child's Play, Inc., in the amount of \$277,449.00, and the vote was as follows:

AYE: Commissioners Ritchie, Wilson, Ging and Mayor Shewey.

NAY: Commissioner Janzen.

Motion was made by Commissioner Janzen and seconded by Commissioner Ritchie to approve an Emergency Resolution authorizing the emergency bidding of a waterline placement project, and authorizing the waiving of notice and bids in conformance with the Public Competitive Bidding Act procedures for emergencies, and the vote was as follows:

AYE: Commissioners Janzen, Ritchie, Wilson, Ging and Mayor Shewey.

NAY: None.

Thereupon, Commissioner Ritchie moved that the Emergency Section of said resolution be approved, which motion was seconded by Commissioner Janzen, and the vote was as follows:

AYE: Commissioners Janzen, Ritchie, Wilson, Ging and Mayor Shewey.

NAY: None.

(Copy Resolution)

Motion was made by Commissioner Ritchie and seconded by Commissioner Wilson to approve the following Consent Items as recommended by staff, and the vote was as follows:

AYE: Commissioners Janzen, Ritchie, Wilson, Ging and Mayor Shewey.

NAY: None.

- (1) Approval of Amendment No. 4 with Convergence Design, LLC, for additional Construction Administration Services with respect to Project No. M-1109A, Convention Hall Renovation and Enid Event Center, in the amount of \$60,000.00;
- (2) Approval of Change Order No. 1 with Chickasaw Telecom, Inc. for Project No. M-1109J, Network Hardwiring for Convention Hall and the new Event Center, which will add routing software required to complete the project, at an additional cost of \$6,196.90, for a total revised contract amount of \$167,482.50;
- (3) Denial of tort claims submitted by AAA Fire & Casualty Insurance Company for subrogation on behalf of their insured; Mr. Jeff Stanley for alleged property damages as a result of a repair to the water meter at his residence; and Branda and Jim Stuart for reimbursement of a plumbing bill incurred as the result of alleged problems in the City of Enid's sewer line;
- (4) Approval of Change Order No. 1 with S. L. Madison Construction, LLC, for Project No. F-0905A, 42nd Street and Market Avenue Drainage Improvements, which will relocate and lower the storm pipe system to clear two (2) high-pressure gas pipelines uncovered

across 42nd Street during excavation, at an additional cost of \$21,988.80, for a total revised contract amount of \$99,874.82; and will add 21 calendar days to the contract for a revised completion date for said project of April 2, 2013;

- (5) Acceptance of the following described drainage easement in Block 28, Rock Island Addition, from Chisholm Trail Broadcasting, in conjunction with Project No. F-1005A, extension of a storm sewer line from Rock Island Boulevard to Willow Road;

(Copy Description)

- (6) Approval of Change Order No. 2 with Continental Construction, LLC, for Project No. M-1001A, Pedestrian Trail Project, Phase I, which will adjust final quantities as placed at an additional cost of \$1,504.68, for a total revised contract amount of \$1,004,348.38; and accept said project as completed by the contractor;
- (7) Approval of Change Order No. 1 with Henson Construction, Inc., for Project No. M-1215, Renaissance Parking Facilities, which will add 60 calendar days to the contract time due to delays from conflicts with existing utilities, relocating staging areas for Event Center contractors, and clearing foundations and debris from demolished structures, for a revised completion date of May 31, 2013;
- (8) Approval of Change Order No. 1 with S. L. Madison Construction, LLC, for Project P-1211B, Installation of Riprap for North Government Springs Lake Bank Protection, which will reduce the tons of riprap installed at a savings of \$1,849.50, for a total revised contract amount of \$24,151.50; and accept said project as completed by the contractor;
- (9) Approval of payment to the Oklahoma Department of Transportation in the amount of \$33,500.71, for additional construction management fees in conjunction with Project No. R-0302, Willow Road and Oakwood Road Intersection Improvements, ODOT Project ID STP-124B (079) UR;
- (10) Approval of Change Order No. 4 with Rick Lorenz Construction Company, for Project No. R-1201A, Access Road Improvements in the 5700 Block of West Owen K. Garritt Road, in conjunction with the 2012 Local Street Program, which will fund the modification of the access road near the Oklahoma Highway Patrol Station and Golden Chick Restaurant, at an additional cost of \$28,125.04, for a total revised contract amount of \$1,156,245.69, and add 21 calendar days to the contract time;
- (11) Acceptance of Permit from the Oklahoma Department of Environmental Quality for Project No. S-1311A, Sanitary Sewer Line Extension at Enid Woodring Regional Airport;
- (12) Acceptance of the following described Public Utility Easement in the N.W./4 of Section 2-22-12, Major County, from William C. and Tessa L. Martin, in conjunction with Project No. W-0906A, proposed extension of a raw water collection line in the Cleo Springs well field:

(Copy Description)

- (13) Acceptance of the following described Public Utility Easement in the N.W./4 of Section 3-22-12, Major County, from Lanna Kay Slater, in conjunction with Project No. W-0906A, proposed extension of a raw water collection line in the Cleo Springs well field:

(Copy Description)

- (14) Acceptance of Permit from the Oklahoma Department of Environmental Quality for Project No. 0906A, Water Well Construction in the Cleo Springs Well Field;
- (15) Approval of Change Order No. 1 with Nowak Construction Company, for Project No. W-1006A, 42nd Street Waterline Extension Project, which will adjust final quantities as placed at a savings of \$23,676.00, for a total revised contract amount of \$343,256.00; and accept said project as completed by the contractor;
- (16) Approval of Change Order No. 1 with Luckinbill, Inc., for Project No. W-1102A, East Broadway Waterline Relocation, which will adjust final quantities as placed, at a savings of \$15,315.90, for a total revised contract amount of \$762,766.10; and accept said project as completed by the contractor;
- (17) Acceptance of Permit from the Oklahoma Department of Environmental Quality for Project W-1307A, Waterline Extension to serve 101 South 42nd Street;
- (18) Approval of Retainer Agreement for Professional Legal Services with Attorney Tony G. Puckett, from the firm of McAfee & Taft, Oklahoma City, Oklahoma;
- (19) Acceptance of the following described Easement for Public Highway in Lot 1, Sherwood Heights Addition, from Ricky D. Willingham, in conjunction with Project R-0303D, Willow Road Widening Project:

(Copy Description)

- (20) Approval of purchase of Workers' Compensation Excess Insurance through Midwest Employers Casualty Company, in the amount of \$98,898.00;

and

- (21) Allowance of the following claims for payment as listed:

(List Claims)

Mayor Shewey recessed the meeting to convene as the Enid Municipal Authority.

-TRUSTEES OF THE ENID MUNICIPAL AUTHORITY-

PRESENT: Trustees Janzen, Ritchie, Wilson, Ging, Chairman Shewey, Acting Trust Manager Joan Riley and Secretary Linda Parks.

ABSENT: Trustees Stuber and Blackburn.

Motion was made by Trustee Ritchie and seconded by Trustee Janzen to approve a resolution increasing 2012-2013 Fiscal Financial Plan for the Enid Municipal Authority in the amount of \$66,196.90, to fund Amendment No. 4 with Convergence Design for additional Construction Administration Fees with respect to the Event Center and Convention Hall Renovation projects, and to fund Change Order No. 1 with Chickasaw Telecom, Inc. for additional routing software required to complete the hardwiring system for Convention Hall and the new Event Center, and the vote was as follows:

AYE: Trustees Janzen, Ritchie, Wilson, Ging and Chairman Shewey.

NAY: None.

(Copy Resolution)

Motion was made by Trustee Ritchie and seconded by Trustee Janzen to approve a resolution increasing 2012-2013 Fiscal Financial Plan for the Enid Municipal Authority in the amount of \$83,000.00, to fund construction of the Meadowlake Carousel House Project, and the vote was as follows:

AYE: Trustees Janzen, Ritchie, Wilson, Ging and Chairman Shewey.

NAY: None.

(Copy Resolution)

Motion was made by Trustee Ritchie and seconded by Trustee Ging to approve a resolution increasing 2012-2013 Fiscal Financial Plan for the Enid Municipal Authority in the amount of

\$276,924.32, to fund a property purchase located at 523 South Independence, to fund required additional costs incurred with the purchase of properties located at 412 South Grand and 414 South Grand, to fund rental of the Homeland parking lot for the remaining portion of the fiscal year, and to fund professional services with respect to the Oakwood Mall and Northstar Agri Industries tax increment finance districts, and the vote was as follows:

AYE: Trustees Janzen, Ritchie, Wilson, Ging and Chairman Shewey.

NAY: None.

(Copy Resolution)

Motion was made by Trustee Ritchie and seconded by Trustee Ging to allow the following claims for payment as listed, and the vote was as follows:

AYE: Trustees Janzen, Ritchie, Wilson, Ging and Chairman Shewey.

NAY: None.

(List Claims)

Chairman Shewey adjourned the meeting to convene as the Enid Economic Development Authority.

-TRUSTEES OF THE ENID ECONOMIC DEVELOPMENT AUTHORITY-

PRESENT: Trustees Janzen, Ritchie, Wilson, Ging, Chairman Shewey, Acting General Manager Joan Riley and Secretary Linda Parks.

ABSENT: Trustees Stuber and Blackburn.

Motion was made by Trustee Ritchie and seconded by Trustee Ging to approve a resolution increasing 2012-2013 Fiscal Financial Plan for the Enid Economic Development Authority in the amount

of \$276,924.32, to fund a property purchase located at 523 South Independence, to fund required additional costs incurred with the purchase of properties located at 412 South Grand and 414 South Grand, to fund rental of the Homeland parking lot for the remaining portion of the fiscal year, and to fund professional services with respect to the Oakwood Mall and Northstar Agri Industries tax increment finance districts, and the vote was as follows:

AYE: Trustees Janzen, Ritchie, Wilson, Ging and Chairman Shewey.

NAY: None.

(Copy Resolution)

Motion was made by Trustee Ritchie and seconded by Trustee Ging to approve the purchase of downtown property located at 523 South Independence Avenue, in the amount of \$143,151.00, and the vote was as follows:

AYE: Trustees Janzen, Ritchie, Wilson, Ging and Chairman Shewey.

NAY: None.

Motion was made by Trustee Ritchie and seconded by Trustee Wilson to approve final payment for required additional costs incurred with the purchase of properties located at 412 South Grand and 414 South Grand, and the vote was as follows:

AYE: Trustees Janzen, Ritchie, Wilson, Ging and Chairman Shewey.

NAY: None.

Motion was made by Trustee Ritchie and seconded by Trustee Wilson to allow the following claims for payment as listed, and the vote was as follows:

AYE: Trustees Janzen, Ritchie, Wilson, Ging and Chairman Shewey.

NAY: None.

(List Claims)

Chairman Shewey adjourned the meeting to reconvene as the Enid City Commission.

-MAYOR AND BOARD OF COMMISSIONERS-

There being no further business to come before the Board at this time, motion was made by Commissioner Ritchie and seconded by Commissioner Ging that the meeting adjourn, and the vote was as follows:

AYE: Commissioners Janzen, Ritchie, Wilson, Ging and Mayor Shewey.

NAY: None.

The meeting adjourned at 7:45 P.M.

MINUTES OF SPECIAL MEETING OF
MAYOR AND BOARD OF COMMISSIONERS OF THE CITY OF ENID, OKLAHOMA,
AND TRUSTEES OF THE ENID MUNICIPAL AUTHORITY, A PUBLIC TRUST
HELD ON THE 24TH DAY OF JANUARY 2013

The Mayor and Board of Commissioners of the City of Enid, County of Garfield, State of Oklahoma, and the Trustees of the Enid Municipal Authority, a Public Trust, met in special meeting in the Council Chambers of the Administration Building of the City of Enid, located at 401 West Owen K. Garriott Road in said city, at 6:30 P.M. on the 24th day of January 2013, pursuant to notice given forty-eight (48) hours in advance to the Clerk of the City of Enid, and pursuant to notice thereof displayed at the entrance to the Administration Building of said city, in prominent view and which notice was posted prior to 12:00 P.M. on the 23rd day of January 2013.

-MAYOR AND BOARD OF COMMISSIONERS-

Mayor Shewey called the meeting to order with the following members present and absent:

PRESENT: Commissioners Janzen, Stuber, Ritchie, Wilson, Ging and Mayor Shewey.

ABSENT: Commissioner Blackburn.

Staff present were City Manager Eric Benson, Assistant City Manager Joan Riley, City Attorney Andrea Springer, City Clerk Linda Parks, Engineering Director Robert Hitt, Public Works Director Jim McClain, Planning Administrator Chris Bauer, Safety Director Billy McBride, Steve Kime, Director of Marketing and Public Relations, and Whitney Box, Director of Strategic and Long Term Planning,

Discussion was held regarding a resolution amending the 2012-2013 Water Capital Improvement Fund Budget by appropriating additional funds in the amount of \$2,250,000.00 to fund the emergency bidding and purchase to replace the existing 20-inch waterline from 54th Street and U.S. 412 to 78th Street, 1.3 miles south of U.S. 412.

Engineering Director Robert Hitt made a brief presentation regarding the project, stating that five (5) bids had been received on four (4) sections of the waterline replacement project to place a new 24-inch waterline along a new route following U.S. 412 and 78th Street. He advised commissioners that the lowest responsible bid for all four (4) sections was provided by Nowak Construction Company, Goddard, Kansas, in the total amount of \$3,035,451.00. He went on to say that Section 4 provided for the placement of a 2,460-foot, 8-inch waterline along Kremlin Drive to allow moving service connects off the larger line. He stated that this portion of the project could be constructed by City forces and should not be included in the award, thus reducing the bid amount to \$2,879,211.00.

Change Order No. 1 was addressed which would adjust the pipe alignment to a shorter route, follow the railroad right-of-way, and change the pipe size to 20 inches at a further reduction of \$1,049,183.50. He stated that staff was recommending that a contract be awarded to Nowak Construction Company for Sections 1, 2 and 3, and that Change Order No. 1 be approved, revising the total contract award to \$1,830,027.50.

Following further discussion, motion was made by Commissioner Ritchie and seconded by Commissioner Stuber that the Resolution be approved as presented, and the vote was as follows:

AYE: Commissioners Janzen, Stuber, Ritchie, Wilson, Ging and Mayor Shewey.

NAY: None.

(Copy Resolution)

Motion was made by Commissioner Ritchie and seconded by Commissioner Wilson to approve a resolution amending the 2012-2013 Capital Improvement Fund Budget by decreasing 2012-2013 appropriated amounts in the amount of \$1,250,000.00 to fund the emergency waterline project, and the vote was as follows:

AYE: Commissioners Janzen, Stuber, Ritchie, Wilson, Ging and Mayor Shewey.

NAY: None.

(Copy Resolution)

Motion was made by Commissioner Ritchie and seconded by Commissioner Stuber to approve a resolution amending the 2012-2013 Street and Alley Fund Budget by decreasing 2012-2013 appropriated amounts in the amount of \$1,000,000.00 to fund the emergency waterline project, and the vote was as follows:

AYE: Commissioners Janzen, Stuber, Ritchie, Wilson, Ging and Mayor Shewey.

NAY: None.

(Copy Resolution)

Motion was made by Commissioner Ritchie and seconded by Commissioner Stuber to award a contract to Nowak Construction Company, Goddard, Kansas, for Sections 1, 2 and 3 in the amount of \$2,879,211.00 for the emergency placement of a waterline to replace the existing waterline from 54th Street to 78th Street, 1.3 miles south of U.S. 412, Project No. W-1302A; to approve Change Order No. 1 to said contract which will change the waterline route from U.S. 412 and 78th Street to parallel the railway track, change the 24-inch pipe size that was originally bid to 20 inches, and reduce the contract time from 110 days to 60 days, at a reduction of \$1,049,183.50 for a total revised contract amount of \$1,830,027.50; and authorize the Mayor to execute all contract documents after review by the City Attorney, and the vote was as follows:

AYE: Commissioners Janzen, Stuber, Ritchie, Wilson, Ging and Mayor Shewey.

NAY: None.

Mayor Shewey adjourned the meeting to convene as the Enid Municipal Authority.

-TRUSTEES OF THE ENID MUNICIPAL AUTHORITY-

PRESENT: Trustees Janzen, Stuber, Ritchie, Wilson, Ging, Chairman Shewey, Trust Manger Eric Benson, Assistant Trust Manager Joan Riley, Trust Attorney Andrea Springer, and Secretary Linda Parks.

ABSENT: Trustee Blackburn.

Motion was made by Trustee Ritchie and seconded by Trustee Janzen to approve a resolution modifying the 2012-2013 Fiscal Financial Plan for the Enid Municipal Authority in the amount of \$2,250,000.00 to fund the emergency waterline project, and the vote was as follows:

AYE: Trustees Janzen, Stuber, Ritchie, Wilson, Ging and Chairman Shewey.

NAY: None.

(Copy Resolution)

There being no further business to come before the Authority at this time, motion was made by Trustee Stuber and seconded by Trustee Wilson that the meeting adjourn, and the vote was as follows:

AYE: Trustees Janzen, Stuber, Ritchie, Wilson, Ging and Chairman Shewey.

NAY: None.

The meeting adjourned at 6:51 P.M.

ORDINANCE NO. 2013-_____

AN ORDINANCE AMENDING ENID MUNICIPAL CODE, 2003, TITLE 11, ENTITLED "ZONING," CHAPTER 1, ENTITLED "PURPOSE; INTERPRETATION; DEFINITIONS," SECTION 11-1-7, ENTITLED "DEFINITIONS," TO ADD THE DEFINITION FOR TEMPORARY WORKFORCE HOUSING; AMENDING TITLE 11, ENTITLED "ZONING," CHAPTER 8, ENTITLED "INDUSTRIAL DISTRICTS," ARTICLE A, ENTITLED "I-1 PLANNED INDUSTRIAL PARK DISTRICT," SECTION 11-8A-4, ENTITLED "SUBMISSION OF DEVELOPMENT PLAN," BY ADDING THE REQUIREMENT FOR A DRAINAGE REPORT; AMENDING TITLE 11, ENTITLED "ZONING," CHAPTER 8, ENTITLED "INDUSTRIAL DISTRICTS," ARTICLE A, ENTITLED "I-1 PLANNED INDUSTRIAL PARK DISTRICT," SECTION 11-8A-5, ENTITLED "PERMITTED USES," TO ALLOW FOR TEMPORARY INDUSTRIAL WORKFORCE HOUSING; AMENDING TITLE 11, ENTITLED "ZONING," CHAPTER 8, ENTITLED "INDUSTRIAL DISTRICTS," ARTICLE B, ENTITLED "I-2 INDUSTRIAL (LIGHT) DISTRICT," SECTION 11-8B-3, ENTITLED "PERMITTED USES," TO ALLOW FOR TEMPORARY INDUSTRIAL WORKFORCE HOUSING; AMENDING TITLE 11, ENTITLED "ZONING," CHAPTER 8, ENTITLED "INDUSTRIAL DISTRICTS," ARTICLE B, ENTITLED "I-2 INDUSTRIAL (LIGHT) DISTRICT," SECTION 11-8B-2, ENTITLED "SUBMISSION OF A DEVELOPMENT PLAN," BY ADDING THE REQUIREMENT FOR A DRAINAGE REPORT; AMENDING TITLE 11, ENTITLED "ZONING," CHAPTER 8, ENTITLED "INDUSTRIAL DISTRICTS," ARTICLE C, ENTITLED "I-3 INDUSTRIAL (HEAVY) DISTRICT," SECTION 11-8C-2, ENTITLED "SUBMISSION OF A DEVELOPMENT PLAN," BY ADDING THE REQUIREMENT FOR A DRAINAGE REPORT; AMENDING TITLE 11, ENTITLED "ZONING," CHAPTER 8, ENTITLED "INDUSTRIAL DISTRICTS," ARTICLE C, ENTITLED "I-3 INDUSTRIAL (HEAVY) DISTRICT," SECTION 11-8C-3, ENTITLED "DISTRICT USE REGULATION," TO ALLOW FOR TEMPORARY INDUSTRIAL WORKFORCE HOUSING; AMENDING TITLE 11, ENTITLED "ZONING," CHAPTER 9, ENTITLED "SU SPECIAL USE DISTRICT," CHAPTER 2, ENTITLED "DISTRICT USE RELATIONS," TO ALLOW FOR TEMPORARY WORKFORCE HOUSING; PROVIDING FOR REPEALER, SAVINGS CLAUSE, SEVERABILITY AND CODIFICATION.

ORDINANCE

BE IT ORDAINED BY THE MAYOR AND BOARD OF COMMISSIONERS OF THE CITY OF ENID, OKLAHOMA:

Section I: That Title 11, Chapter 1, Section 11-1-7 of the Enid Municipal Code, 2003, be amended to read as follows:

11-1-7: DEFINITIONS:

For the purpose of this title, certain terms and words are to be used and interpreted as defined hereinafter; words used in the present tense shall include the future tense; words in the singular number shall include the plural number, except where the natural construction of the writing indicates otherwise. The word "shall" is mandatory and not directory.

ACCESSORY BUILDING OR USE: A building, structure or use, which is subordinate to the main building, which serves a purpose clearly incidental and related to the main building, and is located on the same lot as the main building. An "accessory building" may include, but is not limited to, a private garage, storage building, carport, playhouse, or greenhouse. An "accessory structure or use" may include, but is not limited to, a satellite dish or antenna, swimming pool, or tennis court.

ADULT ENTERTAINMENT USE: Amusement or entertainment use which is distinguished by an emphasis on acts or material depicting, describing or relating to "sexual conduct" or "specified anatomical areas" including, but not limited to, topless or bottomless dancers, seminude dancers, exotic dancers, strippers, male or female impersonators or similar entertainment.

AIR RIGHTS: The rights to a space above a property.

AIRSPACE: The space above the land, which might be subject to division and sale either with, or separate from, the surface.

ALLEY: A minor right of way dedicated to public use which affords a secondary means of vehicular access to the back or side of properties otherwise abutting a street and which may be used for public utility purposes.

APARTMENT HOUSE OR MULTIPLE-FAMILY DWELLING: A single detached dwelling designed for, and occupied by, three (3) or more families living independently of each other as separate housekeeping units, including apartment houses, apartment hotels and flats, but not including auto or trailer courts or camps, hotels or resort type hotels.

BASEMENT: A story partly or wholly underground. For purposes of height measurement, a basement shall be counted as a story when more than one-half ($\frac{1}{2}$) of its height is above the average level of the adjoining ground or when subdivided and used for commercial or dwelling purposes by other than a janitor employed on the premises.

BOARDING HOUSE: A dwelling other than a hotel where, for compensation and by prearrangement for a definite period, meals or lodging are provided for three (3) or more, but not exceeding twelve (12), persons.

BUILDING: Any structure intended for shelter, housing or enclosure of persons, animals or chattel. When separated by dividing firewalls without openings, each portion of such structure so separated shall be deemed a separate structure.

BUILDING HEIGHT: The vertical distance from the average line of the highest and lowest points of that portion of the lot covered by the building to the highest point of coping of a flat roof, or the deck line of a mansard roof, or to the average height of the highest gable of a pitch or hip roof.

BUILDING, MAIN: A building in which is conducted the principal use of the lot on which it is situated. In a residential district, any dwelling shall be deemed to be a main building on the lot on which it is situated.

BUILDING SITE: A single parcel of land under one ownership, occupied, or intended to be occupied, by a building or structure.

CARPORT: A permanently roofed structure, open on at least two (2) sides, designed for, or occupied by, a private passenger vehicle.

CHILDCARE CENTER: Any place, home or institution which receives eight (8) or more children under the age of sixteen (16) years, and not of common parentage, for care apart from their natural parents, legal guardians or custodians, when received for regular periods of time for compensation; provided, however, this definition shall not include public and private schools organized, operated or approved under the laws of this state for custody of children fixed by a court of competent jurisdiction, children related by blood or marriage within the third degree to the custodial person, or to churches or other religious or public institutions caring for children within the institutional building while their parents or legal guardians are attending services or meetings or classes or engaged in church activities.

CHILDCARE ESTABLISHMENT: A home occupation, licensed by the Oklahoma department of human services, that provides for the care of no more than seven (7) children under the age of sixteen (16) years, apart from their natural parents, legal guardian or custodians, when received for regular periods of time and for compensation. A childcare establishment may employ one additional person other than the inhabitants of the home.

CHILDCARE, LARGE FAMILY: A residential family home, licensed by the Oklahoma department of human services, which provides care and supervision for eight (8) to twelve (12) children for part of the twenty four (24) hour day.

COLLECTOR STREET: A street which filters traffic from local streets before their capacity is exceeded.

CONDOMINIUM: A multiple unit structure in which the tenant holds full title to his unit and joint ownership in a share of the land and/or other common property of the structure.

CONTAINERS: Containerization (or containerisation) is a system of intermodal freight transport using standard ISO (international organization for standardization) containers known as shipping containers, ITUs (intermodal transport units or isotainers) or any other freight container that can be loaded and sealed intact onto container ships, railroad cars, planes, and trucks.

DEVELOPMENTAL DISABILITY¹: A severe chronic disability that: is attributable to a mental or physical impairment or combination of mental and physical impairments; is manifested before the person attains age twenty two (22); is likely to continue indefinitely; results in substantial functional limitations in three (3) or more of the following areas of major life activity: self-care, learning, mobility, self-direction, capacity for independent living, economic self-sufficiency; and reflects the person's need for combination and sequence of special, interdisciplinary, or generic care, treatment, or other services that are lifelong or of extended duration and are individually planned and coordinated.

DISTRICT: Any section or sections of Enid, Oklahoma, for which regulations governing the use of buildings and premises or the height and area of buildings are uniform.

DWELLING: Any building, or portion thereof, which is designed or used as living quarters for one or more families, but not including house trailers.

DWELLING, COOPERATIVE: A multi-family development operated by and for its occupants. Individual occupants do not hold full title to their specific housing units, but own shares in the enterprise.

DWELLING, MULTIPLE-FAMILY: A dwelling designed for occupancy by three (3) or more families living independently of each other, exclusive of auto or trailer courts or camps, hotels or resort type hotels.

DWELLING, SINGLE-FAMILY: A dwelling designed to be occupied by one family.

DWELLING, TWO-FAMILY: A dwelling designed to be occupied by two (2) families living independently of each other.

EASEMENT: A grant by the property owner to the public, a corporation, or persons, of the use of a strip of land for specified purposes.

FAMILY: One person or more persons related by blood or marriage, including adopted children, or a group of not to exceed five (5) persons (excluding servants) not all related by blood or marriage, occupying premises and living as a single nonprofit housekeeping unit as distinguished from a group occupying a boarding or lodging house, hotel, club, or similar dwelling for group use. A "family" shall be deemed to include domestic servants employed by said family.

FLOOR AREA RATIO: The gross area of building(s) divided by the gross area of a lot or parcel.

FRONT ELEVATION: The side of a main building on a lot or parcel of land that contains its principal entrance.

GARAGE APARTMENT: A dwelling unit for one family erected above a private garage.

GARAGE, PRIVATE: An accessory building or a part of a main building used for storage purposes only for not more than three (3) automobiles, or for a number of automobiles which does not exceed two (2) times the number of families occupying the dwelling unit to which the garage is accessory, whichever number is greater.

GARAGE, PUBLIC: Any garage other than a private garage, available to the public, used for the care, servicing, repair, or equipping of automobiles or where such vehicles are parked or stored for remuneration, hire or sale.

GASOLINE, SERVICE OR FILING STATION: Any area of land, including structures thereon, that is used for the retail sales of gasoline or oil fuels, butane or propane fuels, or other automobile accessories, and which may or may not include facilities for lubrication, washing, cleaning or otherwise servicing automobiles, but not including the painting thereof.

GOLF COURSE: Not to include a miniature golf course or commercial driving range.

GROSS AREA: All lot or parcel area including one-half ($\frac{1}{2}$) of the right of way of any abutting street.

GROSS DENSITY: The number of dwelling units divided by the gross area.

GROUP HOME: A facility, licensed by the state of Oklahoma, providing housing and habilitative services to persons with developmental disabilities. For purposes of zoning, a group home providing housing and habilitative services to five (5) or fewer persons not including staff shall be considered a single family.

HABILITATION: Procedures and interventions designed to assist a developmentally disabled individual achieve greater physical, mental and social development by enhancing the well being of the person and teaching skills which increase the possibility that a resident of a group home will make progressively independent and responsible decisions about social behavior, quality of life, job satisfaction and personal relationships.

HELP YOURSELF LAUNDRY: A laundry providing home type washing, drying, and ironing machines for hire to be used primarily by the customers on the premises. This includes coin operated machines for dry cleaning purposes also.

HOME OCCUPATION: Any occupation or profession carried on by the inhabitants, which shall exclude any additional employees, which shall be clearly incidental and secondary to the use of the dwelling for dwelling purposes, which shall not change the character thereof, which shall be conducted entirely within the main or accessory buildings; provided, that no trading in

merchandise shall be carried on and in connection with which there shall be no display of merchandise or sign other than one nonilluminated nameplate not more than four (4) square feet in area attached to the main or accessory building and in which no mechanical equipment shall be used or activity shall be conducted which creates any noise, dust, odor, or electrical disturbance beyond the confines of the lot on which said occupation is conducted. The conducting of any occupation or profession, which exceeds the standards above, shall not be defined as a home occupation.

HOTEL: A building or group of buildings under one ownership containing six (6) or more sleeping rooms, intended or designed to be occupied as the more or less temporary abiding place of persons who are lodged with or without meals for compensation, but not including an auto or trailer court or camp, sanitarium, hospital, asylum, orphanage or building where persons are housed under restraint.

ITINERANT MERCHANT; TRANSIENT VENDOR: Any person, whether as owner, agent, consignee or employee, whether a resident of the city or not, who engages in a temporary business of selling and delivering goods, wares and merchandise within the city, and who, in furtherance of such purpose, hires, leases, uses, or occupies any building, structure, motor vehicle, tent, or public or private parking lot, or other place within the city, for the exhibition and sale of such goods, wares, and merchandise, either privately or at public auction; provided, that such definition shall not be construed to include any person, firm or corporation who, while occupying such temporary location, does not sell from stock, but exhibits samples only for the purpose of securing orders for future delivery only. The person so engaged shall not be relieved from complying with the provisions of this title merely by reason of associating temporarily with any local dealer, trader, merchant, or auctioneer. "Itinerant merchant" shall also include transient merchants and itinerant vendors.

JUNK: Used, broken, discarded, or abandoned materials. This shall include wood, paper, glass, rags, rubber, metal, concrete, or other personal property, whether of value or valueless. It shall also include automobiles or machines of any type and/or parts thereof, which are no longer in operable condition.

JUNKYARD OPERATION: The sale, storage, display, dismantling, and demolition of "junk" as defined in this section.

KENNEL: Any lot or premises on which more than five (5) dogs, cats, or potbellied pigs in any combination thereof, more than six (6) months of age, are kept.

LOCAL STREET: A street which serves primarily to provide direct access to abutting property, has the lowest level of mobility, and service to through traffic movement is deliberately discouraged.

LOT: Any plot of land occupied, or intended to be occupied, by one building, or group of buildings, and its accessory buildings and uses, including such open space as required by this title and other laws or regulations, and having its principal frontage on a street.

LOT AREA: Total horizontal area included within lot lines.

LOT, CORNER: A lot of which at least two (2) adjacent sides abut for their full lengths on a street; provided, that the interior angle at the intersection of such sides is less than one hundred thirty five degrees (135°). For the purposes of this definition, the front and rear elevations of a residence erected in a corner lot in the two-family or four-family districts may face the side lot lines in accordance with regulations of this title.

LOT, DOUBLE FRONTAGE: A lot which runs through a block from street to street and which has two (2) nonintersecting sides abutting on two (2) or more streets.

LOT FRONTAGE: That dimension of a lot or portion of a lot abutting on a street, excluding the side dimension of a corner lot.

LOT, INTERIOR: A lot other than a corner lot.

LOT LINES: The lines bounding a "lot" as defined herein.

MEDICAL FACILITIES:

A. Convalescent, Rest Or Nursing Home: A health facility where persons are housed and furnished with meals and continuing care for compensation.

B. Dental Clinic Or Medical Clinic: A facility for the examination and treatment of ill and afflicted human outpatients; provided, however, that patients are not kept overnight, except under emergency conditions.

C. Dental Office Or Doctor's Office: Same as "dental or medical clinic."

D. Hospital: An institution providing health services primarily for human inpatients, medical or surgical care for the sick or injured and including related facilities such as laboratories, outpatient departments, training facilities, central service facilities and staff office which are an integral part of the facilities.

E. Public Health Center: A facility primarily utilized by a health unit for the provision of public health services including related facilities such as laboratories, clinics, and administrative offices operated in connection therewith.

F. Sanitarium: An institution providing health facilities for inpatient medical treatment or treatment and recuperation using natural therapeutic agents.

MINOR ARTERIAL: A street which carries traffic from collector streets to principal arterial streets, and provides service to trips of moderate length.

MOBILE OR MANUFACTURED HOME²: A structure, transportable in one or more sections

which, in a traveling mode, measures eight feet (8') or more in width and/or forty feet (40') in length and/or, when erected on a site, is three hundred twenty (320) or more square feet in floor area, and which is manufactured on a permanent chassis and designed to be used as a dwelling with or without a permanent foundation, when connected to required utilities. This definition shall not include the term "modular home", which is a manufactured structure utilized for residential purposes, transportable in one or more sections, which is lacking a chassis and is intended to be located only upon a permanent foundation.

NONCONFORMING USE: A structure or land lawfully occupied by a use that does not conform to the regulations of the district in which it is situated.

PARKING SPACE: A space located on private property which is a permanently surfaced area enclosed or unenclosed, sufficient in size to store one automobile together with a permanently surfaced driveway connecting the parking space with a street or alley and permitting ingress and egress of an automobile.

PERSONAL SELF-SERVICE RENTAL STORAGE OR MINISTORAGE: A building or series of buildings, containing not less than ten (10) enclosed storage spaces for rent to the public and designed to provide private storage for personal use. Such storage spaces shall not exceed eight hundred (800) square feet. Ministorage structures shall not be located on any commercially zoned tract, parcel, or lot of land comprising less than one acre. "Personal self-service rental storage or ministorage" shall not be construed to include commercial and/or industrial warehouses.

PLANT NURSERY: A lot, building, structure, or combination thereof, on which trees, plants, or shrubs are raised for delivery and sale to commercial greenhouses, but excluding the retailing of said plants on the premises. A structure used for a plant nursery cannot exceed the requirements specified in the building code for an accessory building or private garage.

PRINCIPAL ARTERIAL: A street especially designed for through traffic or the capability of moving a high volume of traffic.

PRINCIPAL BUILDING OR PRINCIPAL STRUCTURE: A building or structure or, where the context so indicates, a group of buildings or structures, in which the principal use of a lot or parcel is conducted. This shall include any buildings which are attached to the principal structure by a covered structure.

PRINCIPAL USE: The main use of land or structures, as distinguished from a secondary or accessory use.

PRIVATE CLUBHOUSE: A building or grounds, the principal use of which is recreational, including culinary and bathing uses, but excluding temporary or permanent residence for sleeping facilities, and the sale of intoxicating beverages.

ROOMING HOUSE: A building where lodging only is provided for compensation to three (3) or

more, but not exceeding twelve (12), persons; all in excess of this number shall be defined as a "motel" under the terms of this title.

SEXUAL CONDUCT:

- A. The fondling or other touching of human genitals, pubic area, buttocks or female breasts;
- B. Ultimate sexual acts, normal or perverted, actual or simulated, including intercourse or physical contact with a person's clothed or unclothed genitals, pubic area, buttocks or if such person be a female, breast;
- C. Masturbation;
- D. Excretory functions as part of, or in connection with, any of the activities set forth in subsections A through C of this definition.

SPECIFIED ANATOMICAL AREAS:

- A. Human genitals, pubic region, buttocks, and female breasts below a point immediately above the top of the areola;
- B. Human male genitals in a discernibly turgid state, even if completely and opaquely covered.

STORM CELLAR: An enclosed structure located at or below grade designed for protection from dangerous windstorms.

STORY: That portion of a building, other than a basement, included between the surface of any floor and the surface of the floor next above it, or if there be no floor above it, then the space between the floor and the ceiling next above it.

STREET: Any public thoroughfare which affords the principal means of access to abutting property.

STRUCTURAL ALTERATION: Any change in the supporting members of a building, such as bearing walls or partitions, columns, beams or girders, or any substantial change in the roof or in the exterior walls.

STRUCTURE: Anything constructed or erected, the use of which requires location on the ground or attached to something having a location on the ground. This includes, but is not limited to, carports, advertising signs, billboards, and poster panels.

[TEMPORARY INDUSTRIAL WORKFORCE HOUSING: Temporary manufactured housing units with dormitories, laundry facilities, recreation halls, commercial kitchens and dining facilities to support a temporary labor force.](#)

TOURIST COURT: An area containing one or more structures designed or intended to be used as temporary sleeping facilities of one or more transient families and intended primarily for automobile transients.

TOWNHOUSE: Single-family dwelling units on platted lots detached, semidetached, or attached structures connected by a common wall but held individually by separate ownership.

TRAILER, CAMPING: A portable or mobile living unit used for temporary human occupancy away from the place of residence of the occupants, and not constituting the principal place of residence of the occupants.

TRAILER, MOBILE HOME OR TRAILER HOME OR HOUSE TRAILER: A portable or mobile living unit used or designed for human occupancy on a permanent or year round basis.

WAREHOUSE, COMMERCIAL: A building used for the storage of commercial products prior to distribution to retail outlets and located on a parcel of land of not less than one-half ($\frac{1}{2}$) acre.

YARD: An open space at grade between a building and adjoining lot lines, unoccupied and unobstructed by any portion of a structure from the ground upward, except for an authorized accessory building or where otherwise specifically provided in this title. In measuring a yard for the purpose of determining the width of the side yard, the depth of a front yard and of the depth of a rear yard, the least horizontal distance between the lot line and the main building shall be used.

YARD, FRONT: A yard located in front of the front elevation of a building and extending across a lot between the side yard lines and being the minimum horizontal distance between the front property line and the outside wall of the main building. The front yard setback line represents the line in front of which no building or structure may be erected, other than steps, fireplaces, storm cellars, unenclosed porches, marquees, balconies, and signs as provided for in this title. In the four-family and multi-family zoning districts, a front yard on an interior lot may be the yard extending from the front elevation of a building to a side lot line; provided, that the yard setback which has its full frontage on a public street is not less than twenty feet (20').

YARD, REAR: A yard extending across the rear of a lot measured between lot lines and being the minimum horizontal distance between the rear lot line and the rear of the main building. On both corner lots and interior lots, the rear yard shall in all cases be at the opposite end of the lot from the front yard.

YARD, SIDE: A yard between the building and the side lines of the lot and extending from the front lot line to the rear lot line and being the minimum horizontal distance between a side lot line and the outside wall of the side of the main building. Steps, fireplaces, air conditioning units, signs, storm cellars, unenclosed porches, and unenclosed balconies may extend into a side yard. (Ord. 80-29, 12-16-1980, as amended; amd. 2003 Code; Ord. 04-02, 1-6-2004; Ord. 2009-19, 8-4-2009)

Section II: That Title 11, Chapter 8, Article A, Section 11-8A-4 of the Enid Municipal Code, 2003, be amended to read as follows:

11-8A-4: SUBMISSION OF DEVELOPMENT PLAN:

- A. Inspection And Recommendation: The proponents of a planned industrial park shall submit a plan of development to the mMetropolitan aArea pPlanning eCommission for its inspection and recommendations.
- B. Information Required: The development plan shall include the following information:
1. Location and size of area involved.
 2. All improvements of surrounding properties lying within five hundred feet (500') of the proposed I-1 district.
 3. All building locations of the proposed I-1 district.
 4. All parking and loading locations of the proposed I-1 district.
 5. Provisions for the adequate disposition of natural storm water in accordance with the adopted design criteria, standards and ordinances of the City, indicating the location, size, type and grade of ditches, catch basins and pipes, connections to existing drainage systems and on-site stormwater detention systems. All such design criteria shall be approved by the City Engineer.
 6. Existing topography, with a maximum contour interval of two feet (2') and proposed finished grading by contours of two feet (2') supplemented where necessary by spot elevation.
- C. Building Permit Issuance: Prior to the issuance of any building permits, there must be an approved development plan with any revisions requested by the mMetropolitan aArea pPlanning eCommission, and on file in the eCity pPlanning offices. All development plans must be considered at a regular meeting of the mMetropolitan aArea pPlanning eCommission. (Ord. 80-29, 12-16-1980, as amended)

Section III: That Title 11, Chapter 8, Article A, Section 11-8A-5 of the Enid Municipal Code, 2003, be amended to read as follows:

11-8A-5: PERMITTED USES:

Uses permitted in the planned industrial park may include the following:

Any use charged with the principal function of basic research, design and pilot or experimental product development.

Any use, except dwellings, permitted in the C-3 general commercial district. No dwelling use, except sleeping facilities required by caretakers or night watchmen employed on the premises, shall be permitted in this district.

Administrative and professional offices.

Apparel (clothing) and other products manufactured from textile.

Automobile and truck sales operations; provided, that the storage of vehicles kept for servicing and repair must be totally screened from public view.

Banks and financial institutions.

Building, plumbing, electrical, and mechanical contractors' warehousing; provided, that the storage of materials and supplies are contained within an enclosed building totally screened from public view.

Cameras and other photographic equipment and supplies.

Containers.

Dentures and drugs.

Jewelry.

Laboratories - medical, dental, research, testing.

Manufacture and assembly of electrical and electronic products.

Medical appliances.

Musical instruments.

Plastic products.

Precision instruments.

Printing, newspaper publishing and binding.

Retailing of agricultural machinery, equipment and supplies normally required for farming operations, but excluding heavy equipment commonly used in dirt or paving construction.

Sporting and athletic equipment.

| [Temporary Industrial Workforce Housing.](#)

Toys.

Wholesale operations; provided, that the storage of materials and supplies are contained within an enclosed building or totally screened from public view.

Any other manufacturing or service establishments that, in the opinion of the planning commission, are similar in use to the type listed above. (Ord. 2009-19, 8-4-2009)

Section IV: That Title 11, Chapter 8, Article B, Section 11-8B-2 of the Enid Municipal Code, 2003, be amended to read as follows:

11-8B-2: SUBMISSION OF DEVELOPMENT PLAN:

Plans for development on property zoned I-2 abutting arterials or within three hundred feet (300') of an arterial shall submit a plan of development to the [mM](#)etropolitan [aA](#)rea [pP](#)lanning [eC](#)ommission for its inspection and recommendations.

The development plan shall include the following information:

- A. Location and size of area involved.
- B. All improvements of surrounding properties lying within one hundred feet (100') of the proposed I-2 development.
- C. All building locations of the proposed I-2 development.
- D. All parking and loading locations of the proposed I-2 development.
- E. Provisions for the adequate disposition of natural storm water in accordance with the adopted design criteria, standards and ordinances of the City, indicating the location, size, type and grade of ditches, catch basins and pipes, connections to existing drainage systems and on-site stormwater detention systems. All such design criteria shall be approved by the City Engineer.
- F. Existing topography, with a maximum contour interval of two feet (2') and proposed finished grading by contours of two feet (2') supplemented where necessary by spot elevation.

Prior to the issuance of any building permits, there must be an approved development plan with any revisions requested by the [mM](#)etropolitan [aA](#)rea [pP](#)lanning [eC](#)ommission, and on file in the [eC](#)ity [pP](#)lanning offices. All development plans must be considered at a regular meeting of the [mM](#)etropolitan [aA](#)rea [pP](#)lanning [eC](#)ommission. (Ord. 2004-12, 4-6-2004)

Section V: That Title 11, Chapter 8, Article B, Section 11-8B-3 of the Enid Municipal Code, 2003, be amended to read as follows:

11-8B-3: PERMITTED USES:

A. Uses; Restrictions:

1. Uses Permitted:

Any use, except dwellings, permitted in the commercial districts. No dwelling use, except sleeping facilities required by caretakers or night watchmen employed on the premises, shall be permitted in this district, except in accordance with section 11-8B-4 of this article.

Building material sales yard and lumberyard, including the sale of rock, sand, gravel and the like as an incidental part of the main business, but not including a concrete batch plant or transit mix plant.

Containers.

Contractor's equipment storage yard or plant, or rental of equipment commonly used by contractors.

Freighting or trucking yard or terminal.

Oil field equipment storage yard.

Public utility service yard or electrical receiving or transforming station.

Sale barn.

[Temporary Industrial Workforce Housing.](#)

Wholesale liquor warehouse.

2. Restrictions: No article or material permitted in this district shall be kept stored or displayed outside the confines of a building when abutting a residential zone or residential development, unless it be so screened by fences, walls or planting that it cannot be seen from adjoining public streets or adjacent lots when viewed by a person standing on ground level.

B. Uses Within Enclosed Building: The following uses when conducted within a completely enclosed building:

Assembly of electrical appliances, electronic instruments and devices, radios and phonographs, including the manufacture of small parts only, such as coils, condensers, transformers, crystal holders and the like.

Blacksmith shop and machine shop, excluding punch presser over twenty (20) tons' rated capacity, drop hammer, and automatic screw machines.

Foundry casting lightweight nonferrous metal not causing noxious fumes or odors.

Manufacture and maintenance of electric and neon signs, commercial advertising structures, light sheet metal products, including heating and ventilation ducts, and equipment, cornices, eaves and the like.

Manufacture, compounding, assembly or treatment of articles of merchandise from the following previously prepared materials: bone, cellophane, canvas, cloth, cork, feathers, felt, fiber, fur, glass, hair, horn, leather, paper, plastic, precious or semiprecious metals or stone, shell textiles, tobacco, wood, yard, and paint not employing a boiling process.

Manufacture, compounding, processing, packaging or treatment of such products as bakery goods, candy, cosmetics, dairy products, drugs, perfumes, pharmaceuticals, perfumed toilet soap, toiletries, and food products.

Manufacture of musical instruments, toys, novelties, and rubber and metal stamps.

Manufacture of pottery and figurines or other similar ceramic products, using only previously pulverized clay and kilns fired only by electricity or gas.

Truck repair and overhauling, tire retreading or recapping and battery manufacturing.

- C. Compliance With Pollution Regulations: The uses permitted under this section shall be conducted in such a manner that any noxious odor, fumes or dust generated beyond the property line of the lot on which the use is located will do so only with compliance with all city, state and federal pollution regulations. (Ord. 2004-12, 4-6-2004; amd. Ord. 2009-19, 8-4-2009)

Section VI: That Title 11, Chapter 8, Article C, Section 11-8C-2 of the Enid Municipal Code, 2003, be amended to read as follows:

11-8C-2: SUBMISSION OF DEVELOPMENT PLAN:

Plans for development on property zoned I-3 abutting arterials or within three hundred feet (300') of an arterial shall submit a plan of development to the mMetropolitan aArea pPlanning eCommission for its inspection and recommendations.

The development plan shall include the following information:

- A. Location and size of area involved.

- B. All improvements of surrounding properties lying within one hundred feet (100') of the proposed I-3 development.
- C. All building locations of the proposed I-3 development.
- D. All parking and loading locations of the proposed I-3 development.
- E. Provisions for the adequate disposition of natural storm water in accordance with the adopted design criteria, standards and ordinances of the City, indicating the location, size, type and grade of ditches, catch basins and pipes, connections to existing drainage systems and on-site stormwater detention systems. All such design criteria shall be approved by the City Engineer.
- F. Existing topography, with a maximum contour interval of two feet (2') and proposed finished grading by contours of two feet (2') supplemented where necessary by spot elevation.

Prior to the issuance of any building permits there must be an approved development plan with any revisions requested by the Metropolitan Area Planning Commission and on file in the City Planning offices. All development plans must be considered at a regular meeting of the Metropolitan Area Planning Commission. (Ord. 2004-13, 4-6-2004)

Section VII: That Title 11, Chapter 8, Article C, Section 11-8C-3 of the Enid Municipal Code, 2003, be amended to read as follows:

11-8C-3: DISTRICT USE REGULATIONS:

Property and buildings in an I-3 heavy industrial district may be used for any use except the following:

- A. All residential uses except sleeping facilities required by night watchmen and caretakers employed upon the premises, except in accordance with section 11-8B-4 of this chapter.
- B. All uses not complying with these regulations or any other city, county, state or federal regulation or law.
- C. All of the following uses until they have been studied by the planning commission and have received the express approval of the board of city commissioners. The commission may require approval of the city or county health department, the state fire marshal and other state and county regulating agencies and may attach to the approval specific restrictions designed to protect the public welfare.

Acid manufacture.

Cement, lime, gypsum or plaster of Paris manufacture.

Containers.

Explosives, manufacture or wholesale (liquid explosive) storage.

Gas manufacture.

Grain elevator and storage.

Petroleum or its products, refining of.

Temporary Industrial Workforce Housing.

Wholesale or bulk storage of gasoline, propane, butane or other petroleum.

- D. Salvage yards, unless authorized by review under title 3, chapter 10 of this code, as to property which can comply with the requirements of licensing ordinances for salvage yards.
- E. "Adult entertainment use", as defined in section 11-1-7 of this title, except as provided for in section 11-14-1 of this title. (Ord. 2004-13, 4-6-2004; amd. Ord. 2009-19, 8-4-2009)

Section VIII: That Title 11, Chapter 9, Section 11-9-2 of the Enid Municipal Code, 2003, be amended to read as follows:

11-9-2: DISTRICT USE REGULATIONS:

- A. Uses Permitted: Property and buildings in the SU special use district shall be used only for the following purposes:

Any uses accessory to schools and colleges that are owned and/or controlled by said schools or colleges, including one-family, two-family, and multi-family dwellings.

Containers.

Country clubs.

Federal, state, and city owned property.

Golf course (public or private).

Hospitals, clinics, and medical or dental office surrounding, and in direct relationship to, the hospital or clinic.

Libraries and museums, publicly or privately owned.

Public and private schools and colleges, not to include daycare centers.

- B. Uses Permitted By Review: The following uses may be permitted after review in accordance with section 11-14-1 of this title:

Temporary Industrial Workforce Housing.

Other uses which, in the opinion of the planning commission, are similar to the above uses and are in keeping with the general description of the zoning district and meet the conditions for authorization as specified in section 11-14-1 of this title. (Ord. 2009-19, 8-4-2009)

Section IX: Repealer. All ordinances or parts thereof, which are inconsistent with this ordinance, are hereby repealed.

Section X: Savings Clause. Nothing in this ordinance hereby adopted shall be construed to affect any suit or proceedings now pending in any court, or any rights acquired or liability incurred, nor any cause or causes of action accrued or existing, under any act or ordinance repealed hereby. Nor shall any right or remedy of any character be lost, impaired or affected by this ordinance.

Section XI: Severability. If any one or more of the sections, sentences, clauses or parts of this ordinance, chapter or section shall, for any reason, be held invalid, the invalidity of such section, clause or part shall not affect or prejudice in any way the applicability and validity of any other provision of this ordinance. It is hereby declared to be the intention of the City Commission of the City of Enid that this section of the Enid Municipal Code would have been adopted had such unconstitutional, illegal or invalid sentence, clause, section or part not been included.

Section XII: Codification. This ordinance shall be codified as Title 11, Chapter 1, Section 11-1-7; Title 11, Chapter 8, Article A, Sections 11-8A-4 and 11-8A-5; Title 11, Chapter 8, Article B, Sections 11-8B-2 and 11-8B-3; Title 11, Chapter 8, Article C, Sections 11-8C-2 and 11-8C-3; and Title 11, Chapter 9, Section 11-9-2 of the Enid Municipal Code, 2003.

PASSED AND APPROVED by the Mayor and Board of Commissioners of the City of Enid, Oklahoma, on this _____ day of _____, 2013.

CITY OF ENID, OKLAHOMA

William E. Shewey, Mayor

(SEAL)

ATTEST:

City Clerk, Linda Parks

Approved as to Form and Legality:

Andrea L. Springer, City Attorney

ORDINANCE NO. 2013-

AN ORDINANCE ADDING TITLE 2 CHAPTER 6B, SECTION 2-6B-18 OF THE ENID MUNICIPAL CODE, 2004, IS BEING ADDED TO INCLUDE FEES FOR A TEMPORARY INDUSTRIAL WORK FORCE HOUSING PARK AND RENEWAL FEES; PROVIDING FOR REPEALER, SAVINGS CLAUSE, SEVERABILITY, EFFECTIVE DATE, PENALTY, CODIFICATION AND EMERGENCY.

EMERGENCY ORDINANCE

BE IT ORDAINED BY THE MAYOR AND BOARD OF COMMISSIONERS OF THE CITY OF ENID, OKLAHOMA:

Section I. That Title 2, Chapter 6, Section 2-6B-18 of the Enid Municipal Code, 2004, be added to read as follows:

2-6B-18: TEMPORARY INDUSTRIAL WORK FORCE HOUSING PARKS:

A. Temporary Industrial Work Force Housing Parks: The fee required by section [9-14-3](#) of this code shall be eight percent (8%) upon the gross proceeds or gross receipts derived from all rent for every occupancy of a room or rooms in a temporary industrial work force housing park payable monthly.

B. Temporary Industrial Work Force Housing Parks Renewal: The fee required in subsection [9-14-3](#) of this code shall be eight percent (8%) per bed upon the gross proceeds or gross receipts derived from all rent for every occupancy of a room or rooms in a temporary industrial work force housing park payable monthly.

Section II. Repealer. All ordinances or parts thereof, which are inconsistent with this ordinance, are hereby repealed.

Section III. Savings Clause. Nothing in this ordinance hereby adopted shall be construed to affect any suit or proceeding now pending in any court, or any rights acquired or liability incurred nor any cause or causes of action accrued or existing, under any act or ordinance repealed hereby. Nor shall any right or remedy of any character be lost, impaired or affected by this ordinance.

Section VI. Severability. If any one or more of the sections, sentences, clauses or part of this ordinance, chapter or section shall for any reason be held invalid, the invalidity of such section, clause or part shall not affect or prejudice in any way the applicability and validity of any other provision of this ordinance. It is here by declared to be the intention of the City Commission of the City of Enid that this section of the Enid Municipal Code would have been adopted had such unconstitutional, illegal, or invalid sentence, clause, section or part not been included.

Section V. Effective Date. The provisions of this ordinance shall be in full force and effect on the ____ day of _____ 2013.

Section VI. Penalty. Any person who shall violate any provision of this ordinance, either by doing anything which is prohibited or by failure or refusal to do anything which is commended, shall be guilty of an offense, and upon conviction shall, be punished as indicated in the given section or if the section

is silent, shall pay a fine not exceeding One Hundred dollars (\$100.00), plus costs, providing that each transaction shall be deemed a separate offense.

Section VII. Codification. This ordinance shall be codified as Title 2, Chapter 6B, Section 2-6B-18.

Section VIII. Emergency. Whereas an immediate necessity exists for the need of temporary housing for a temporary labor force, therefore an emergency is declared whereby these Sections shall be in full force and effect from and after its passage, approval, and publication.

PASSED AND APPROVED by the Mayor and Board of Commissioners on the ____ day of _____, 2013.

THE CITY OF ENID, OKLAHOMA

Bill Shewey, Mayor

ATTEST:

(Seal)

City Clerk

APPROVED AS TO FORM AND LEGALITY THIS ____ DAY OF _____, 2013.

City Attorney

ORDINANCE NO. 2013-

AN ORDINANCE AMENDING THE ENID MUNICIPAL CODE, 2003, AMENDING TITLE 6, ENTITLED "MOTOR VEHICLES AND TRAFFIC," CHAPTER 1, ENTITLED "GENERAL TRAFFIC PROVISIONS," SECTION 6-1-4, ENTITLED "SECURITY VERIFICATION FORM," FOR CLARIFICATION; PROVIDING FOR REPEALER, SAVINGS CLAUSE SEVERABILITY, AND CODIFICATION.

ORDINANCE

BE IT ORDAINED BY THE MAYOR AND BOARD OF COMMISSIONERS OF THE CITY OF ENID, OKLAHOMA:

Section I: That Title 6, Chapter 1, Section 6-1-4, entitled "Security Verification Form," of the Enid Municipal Code is hereby amended to read as follows:

6-1-4: SECURITY VERIFICATION FORM³:

- A. Definition: As used in this section, the term "security verification form" shall mean a form, approved by the state board for property and casualty rates, verifying the existence of security required by the compulsory insurance law of the state.
- B. Production Of Security Verification Form:
1. Any owner or operator of a motor vehicle, while operating or using such vehicle or allowing such vehicle to be operated or used, who shall fail to produce for inspection a valid and current security verification form or equivalent form, issued by the state department of public safety in which the vehicle is registered, reflecting liability coverage, upon request of any police officer or upon the request of any person involved in any collision with said owner or operator, shall be guilty of an offense, and shall be subject to suspension of license and registration. If the state of registration does not require security verification, the owner or operator shall produce for inspection a valid and current security verification form or equivalent form, reflecting coverage that meets or exceeds the coverage required under Oklahoma law.
 2. Any owner or operator producing proof in court that a current security verification form or equivalent form which has been issued by the state department of public safety in which the vehicle is registered, reflecting liability coverage for such owner or operator was in force at the time of the alleged offense shall be entitled to dismissal of such charge.

3. Upon conviction, bond forfeiture or deferral of sentence, the court clerk shall forward an abstract to the state department of public safety within ~~ten (10)~~five (5) days reflecting the action taken by the court.

C. Exemptions: The following shall not be required to carry an owner's or operator's security verification form or an equivalent form from the state department of public safety during operation of the vehicle:

~~1. Any vehicle owned or leased by the federal or state government, or any agency or political subdivision thereof;~~

~~2. Any vehicle bearing the name, symbol or logo of the business, corporation or utility on the exterior and which is in compliance with the compulsory insurance law according to records of the state department of public safety which reflect a deposit, bond, or self-insurance;~~

~~3. Any vehicle authorized for operation, under a permit number issued by the interstate commerce commission, or the Oklahoma corporation commission;~~

~~4. Any licensed taxicab;~~

~~5. Any vehicle owned by a licensed, used motor vehicle dealer;~~

~~6. Any vehicle bearing a New Hampshire or Wisconsin tag;~~

71. Any vehicle which is not being used upon the public streets or highways, provided an authorized affidavit is first filed with the motor license agent. (Ord. 2004-29, 9-7-2004)

2. Any person, firm, or corporation engaged in the business of operating a taxicab or taxicabs shall be exempt as long as the taxicab business is properly registered in the City and has provide proof of financial responsibility during the registration process.

D. Seizure and Towing of Vehicles:

1. Upon issuing a citation under this section, the law enforcement officer issuing the citation may seize the vehicle and cause it to be towed and stored if the officer has probable cause to believe that the vehicle is not insured as required.

2. If the operator produces what appears to be a valid security verification form and the officer is unable to confirm compliance or noncompliance, the officer shall be prohibited from seizing the vehicle.

3. No vehicle shall be seized and towed under this provision if the vehicle is displaying a temporary license plate that has not expired.

Section II: REPEALER. All ordinances or parts thereof, which are inconsistent with this ordinance, are hereby repealed.

Section III: SAVINGS CLAUSE. Nothing in this ordinance hereby adopted shall be construed to affect any suit or proceedings now pending in any court, or any rights acquired or liability incurred nor any cause or causes of action accrued or existing, under any act or

ordinance repealed hereby. Nor shall any right or remedy of any character be lost, impaired or affected by this ordinance.

Section IV: SEVERABILITY. If any one or more of the sections, sentences, clauses or parts of this ordinance, chapter or section shall for any reason be held invalid, the invalidity of such section, clause or part shall not affect or prejudice in any way the applicability and validity of any other provision of this ordinance. It is hereby declared to be the intention of the City Commission of the City of Enid that this section of the Enid Municipal Code would have been adopted had such unconstitutional, illegal, or invalid sentence, clause, section or part not been included.

Section X: CODIFICATION. This ordinance shall be codified as Title 6, Chapter 1, Section 6-1-11, Title 6, Chapter 1, Section 6-1-4, of the Enid Municipal Code, 2003.

PASSED AND APPROVED by the Mayor and Board of Commissioners on this ___ day of _____, 2013.

CITY OF ENID, OKLAHOMA

William E. Shewey, Mayor

(SEAL)

ATTEST:

City Clerk

APPROVED AS TO FORM AND LEGALITY:

City Attorney

ORDINANCE NO. 2013-_____

AMENDING TITLE 6, ENTITLED "MOTOR VEHICLES AND TRAFFIC," CHAPTER 1, ENTITLED "GENERAL TRAFFIC PROVISIONS," SECTION 6-1-11, ENTITLED "SCHOOL ZONES," TO ADD SUBSECTIONS FOR VIOLATIONS; PROVIDING FOR REPEALER, SAVINGS CLAUSE SEVERABILITY, AND CODIFICATION.

ORDINANCE

BE IT ORDAINED BY THE MAYOR AND BOARD OF COMMISSIONERS OF THE CITY OF ENID, OKLAHOMA:

Section I: That Title 6, Chapter 1, Section 6-1-11, entitled "School Zones," of the Enid Municipal Code, 2003, is hereby amended to read as follows:

6-1-11: SCHOOL ZONES¹⁶:

A. All streets adjacent to elementary and junior high schools, whether public or private, within the City, and such additional streets near schools as are posted with school zone signs, are designated as school zones. School zones shall be in effect during the posted hours, Monday through Friday during the regular school year, unless otherwise posted. Posting of school zones shall be as approved by the mayor and board of commissioners. Considerations for school zones may be recommended to the mayor and board of commissioners after a traffic study by the metropolitan area planning commission. (1994 Code § 20-15)

B. Any person who operates a vehicle in violation of this section may be charged with the offense of "Speeding in a School Zone."

1. The violation of this section is punishable by a fine of one hundred dollars (\$100.00) if the violator is traveling ten miles per hour (10 mph) or less above the posted limit.

2. If the violator is traveling more than ten miles per hour (10 mph) above the posted limit, the fine shall not exceed two hundred dollars (\$200.00)

Section II: REPEALER. All ordinances or parts thereof, which are inconsistent with this ordinance, are hereby repealed.

Section III: SAVINGS CLAUSE. Nothing in this ordinance hereby adopted shall be construed to affect any suit or proceedings now pending in any court, or any rights acquired or liability incurred nor any cause or causes of action accrued or existing, under any act or ordinance repealed hereby. Nor shall any right or remedy of any character be lost, impaired or affected by this ordinance.

Section IV: SEVERABILITY. If any one or more of the sections, sentences, clauses or parts of this ordinance, chapter or section shall for any reason be held invalid, the invalidity of such section, clause or part shall not affect or prejudice in any way the applicability and validity of any other provision of this ordinance. It is hereby declared to be the intention of the City Commission of the City of Enid that this section of the Enid Municipal Code would have been adopted had such unconstitutional, illegal, or invalid sentence, clause , section or part not been included.

Section XI: CODIFICATION. This ordinance shall be codified as Title 6, Chapter 1, Section 6-1-11, of the Enid Municipal Code, 2003.

PASSED AND APPROVED by the Mayor and Board of Commissioners on this ____ day of _____, 2013.

CITY OF ENID, OKLAHOMA

William E. Shewey, Mayor

(SEAL)

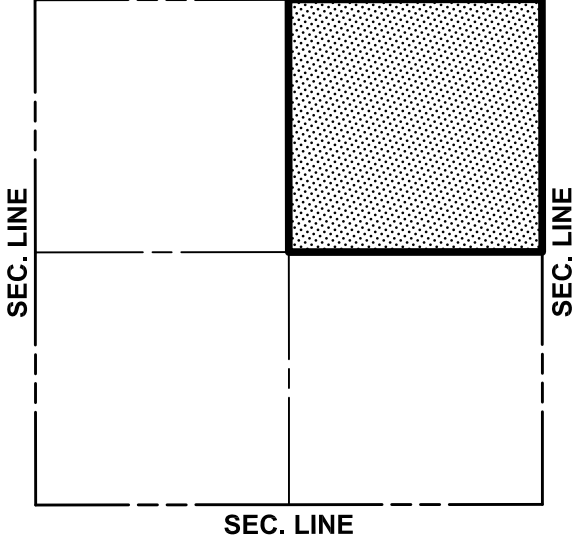
ATTEST:

City Clerk

Approved as to Form and Legality

City Attorney

SEC. LINE



JOB NO. R-1108D PIECE: G-33

PARCEL NO. 1, 1.1

County: GARFIELD

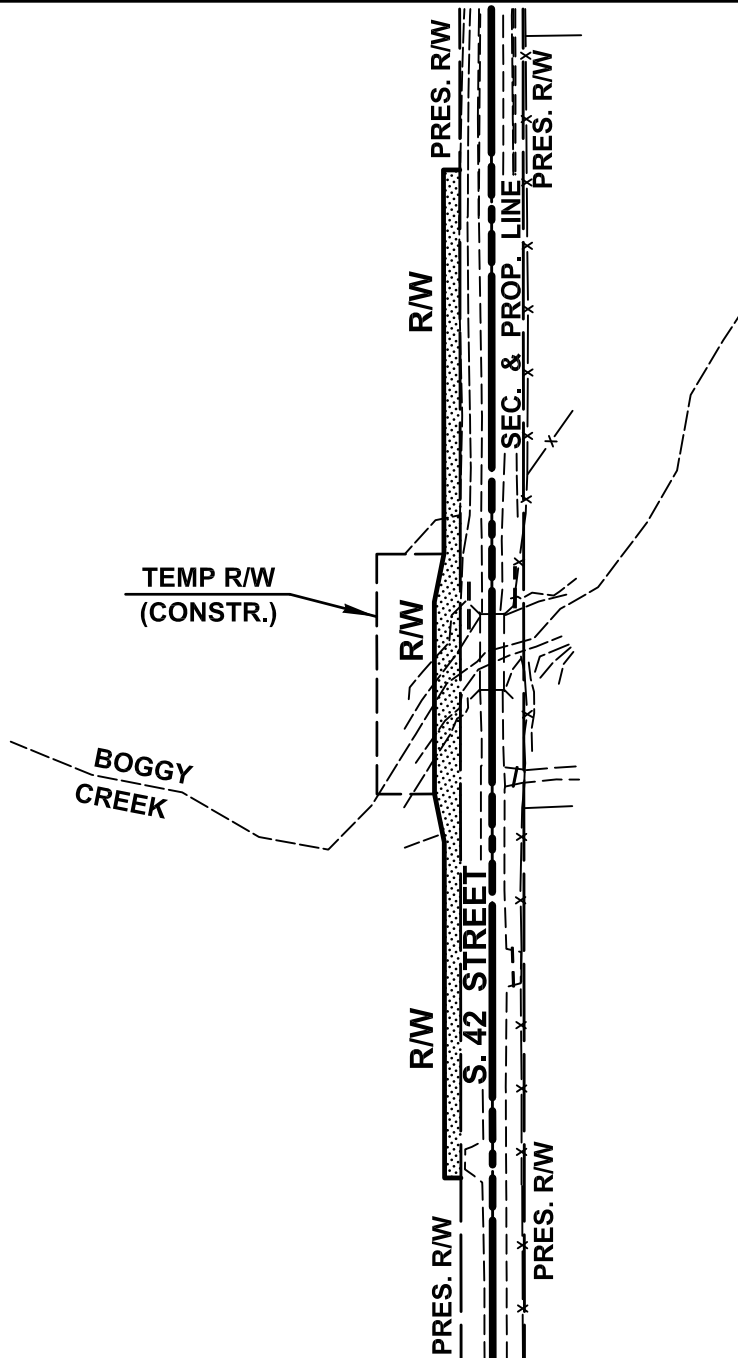
TOTAL PROPERTY LEGAL DESCRIPTION

the NE1/4

Section 15, T22N, R6W



BEFORE GROSS		6,969,600 SF	160.00 ACRES
EXISTING R/W	OUT OF TAKE	SF	ACRES
EXISTING R/W	IN TAKE	SF	ACRES
PERMANENT R/W		20,350 SF	0.47 ACRES
REM. IN QTR.		6,949,250 SF	159.53 ACRES
PERPETUAL EAS.		SF	ACRES
TEMP. R/W	(CHANNEL)	15,250 SF	0.35 ACRES
TEMP. R/W		SF	ACRES
TEMP. R/W		SF	ACRES



SCALE 1" = 200'

U.S. HWY. 412

CONST. 150 SY 8" P.C.C.
DOWEL JOINTED PAVEMENT
ON 6" AGGREGATE BASE

DEDICATION DEED

CONST. 140± LF.
6" BARRIER CURB

INSTALL SIGN (R5-1)

CONST. 45 SY 6" P.C.C.
RAISED MEDIAN
(DOWELED ON)

EXTEND 8 LF 18" RCP.
REUSE END SECTION

4" P.C.C. SIDEWALK

INSTALL SIGN (R4-7a)
INSTALL SIGN (R5-1)

DOUBLE YELLOW



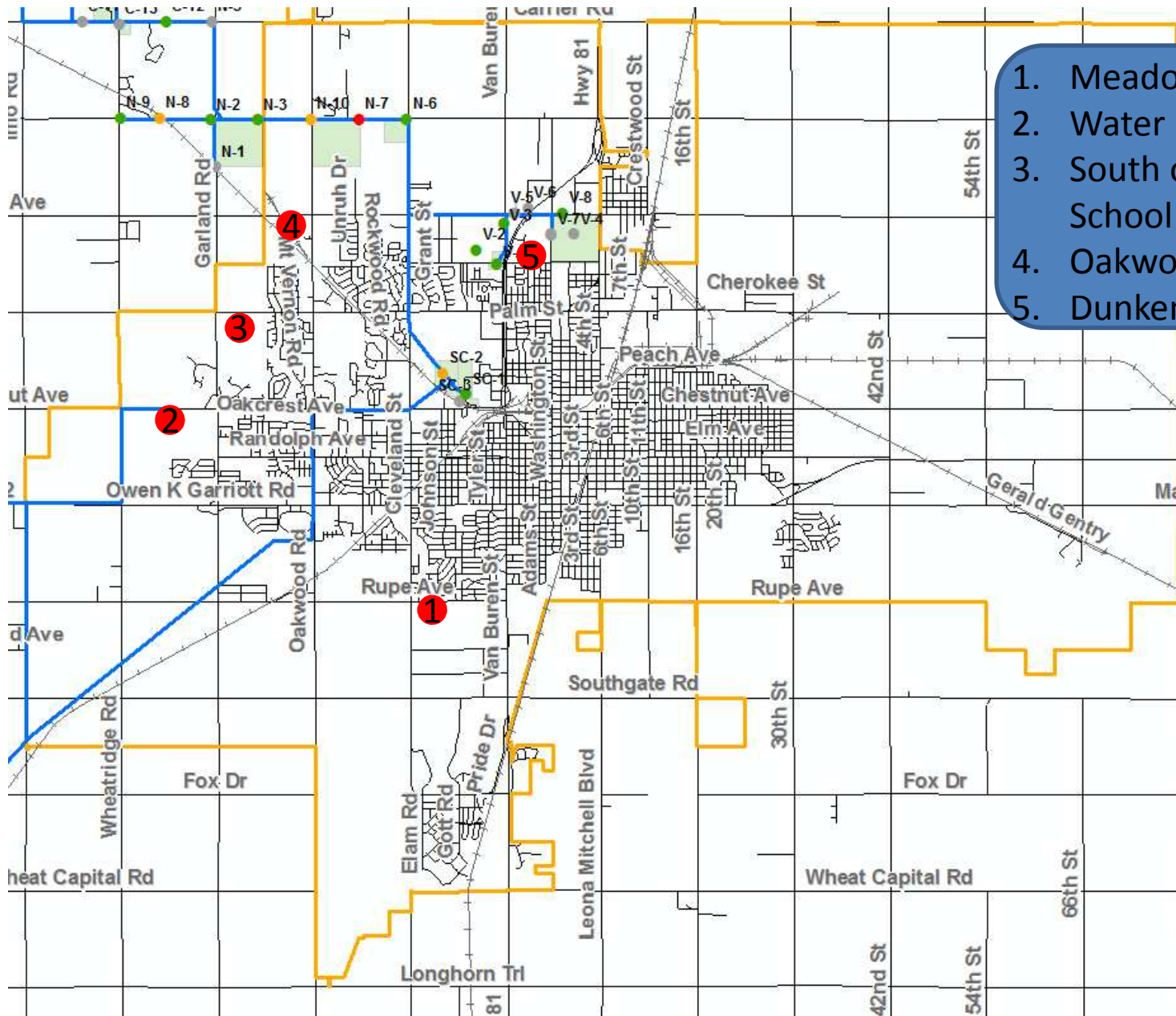
NOT TO SCALE

NOTES:

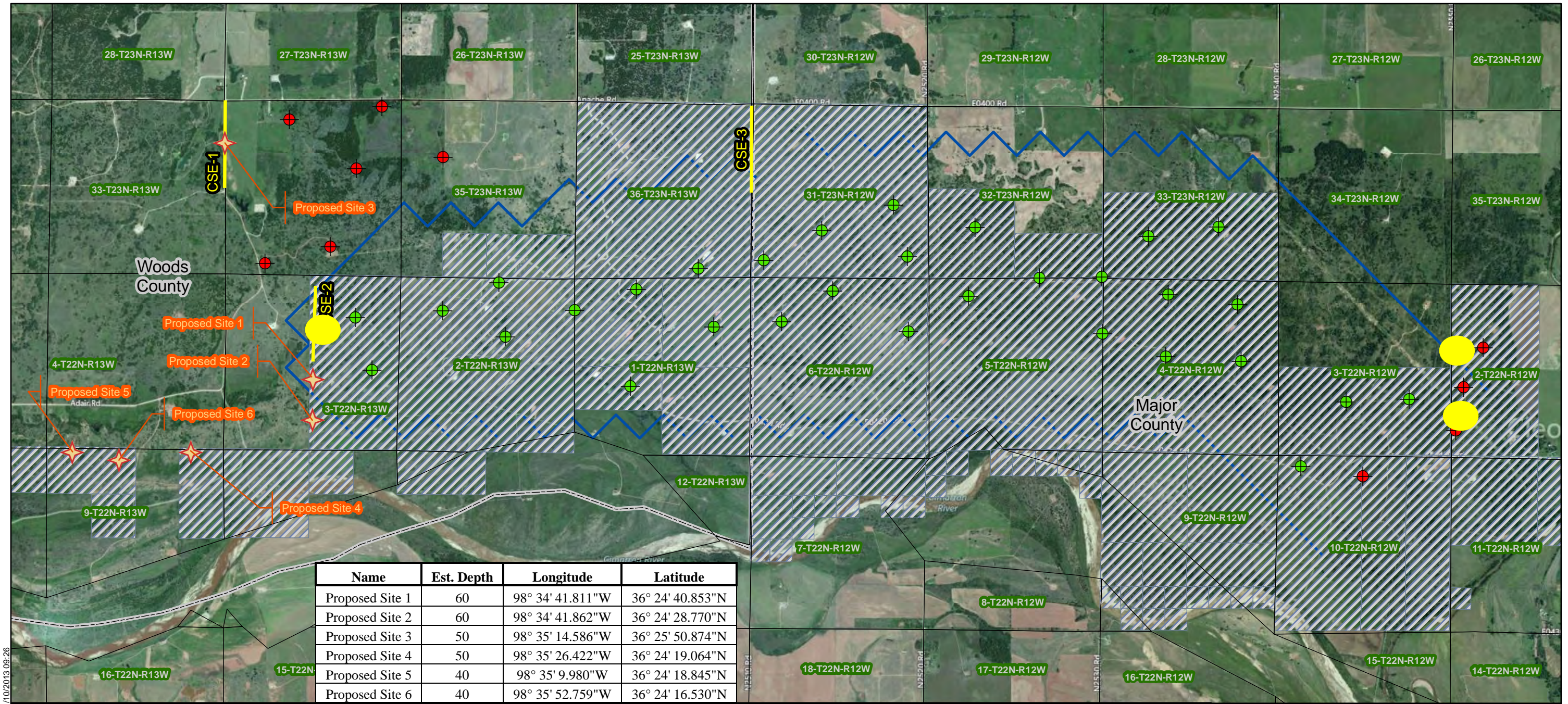
1. REMOVE EXISTING JERSEY BARRIERS AND DELIVER TO CITY OF ENID SERVICE CENTER
2. PAINT 10 L.F. OF CURB YELLOW AT EACH CORNER OF RAISED MEDIAN
3. INSTALL (4) "DO NOT ENTER" SIGNS AND POSTS PER M.U.T.C.D. PER CITY OF ENID STD.
4. STOCKPILE GRASS AND TOPSOIL AND REUSE AS BACKFILL
5. EXIT ACCESS TO U.S. HWY. 412 MUST BE MAINTAINED FOR O.H.P.

O.H.P.

Test Well Sites



- 1. Meadowlake Golf Course
- 2. Water Plant No. 2
- 3. South of Prairie View School
- 4. Oakwood Nature Park
- 5. Dunken's Property



Name	Est. Depth	Longitude	Latitude
Proposed Site 1	60	98° 34' 41.811"W	36° 24' 40.853"N
Proposed Site 2	60	98° 34' 41.862"W	36° 24' 28.770"N
Proposed Site 3	50	98° 35' 14.586"W	36° 25' 50.874"N
Proposed Site 4	50	98° 35' 26.422"W	36° 24' 19.064"N
Proposed Site 5	40	98° 35' 9.980"W	36° 24' 18.845"N
Proposed Site 6	40	98° 35' 52.759"W	36° 24' 16.530"N

Explanation

- ★ CSE Test Drill Locations
- Test Wells
- City Wells
- Production Wells
- Survey Lines
- ▨ Enid Municipal Authority Water Rights
- ▭ Cleo Springs Well Field
- ▭ County

File Name: Figure 9-Recommended Test Drilling.mxd; Last Saved: 1/10/2013 09:26

Water rights based on OWRB datafile published 11/1/2012.

CANVASS OF BIDS
for
2012 COPPER REMOVAL PROGRAM, PHASE 1
Project Number W-1301A

<u>FIRM NAME AND ADDRESS</u>	<u>PRODUCT/SERVICE BID</u>	<u>PRICE</u>	<u>Time</u>
Luckinbill, Inc	Base Bid	\$ 174,900.00	210
P. O. BOX: 186	Alternate 1	\$ 120,550.00	75
ENID, OK	Total	\$ 295,450.00	

Bid meets or exceeds all major specifications: X YES NO
Bid meets or exceeds all minor specifications: X YES NO

DEVIATIONS: Did meet the specifications.

Nowak Construction Company	Base Bid	\$ 275,713.00	120
200 S Goddard Rd	Alternate 1	\$ 161,650.00	120
Goddard, KS	Total	\$ 437,363.00	

Bid meets or exceeds all major specifications: X YES NO
Bid meets or exceeds all minor specifications: X YES NO

DEVIATIONS: Did meet the specifications.

Goins Enterprises	Base Bid	\$ 154,350.00	90
3255 N County Ln 252	Alternate 1	\$ 95,550.00	75
Joplin, MO	Total	\$ 249,900.00	

Bid meets or exceeds all major specifications: X YES NO
Bid meets or exceeds all minor specifications: X YES NO

DEVIATIONS: Did meet the specifications.

Budget Plumbing	Base Bid	\$ 165,500.00	100
5818 S 16 th Street	Alternate 1	\$ no bid	
Enid, OK 73701	Total	\$ 165,500.00	

Bid meets or exceeds all major specifications: X YES NO
Bid meets or exceeds all minor specifications: X YES NO

DEVIATIONS: Did meet the specifications.

Young Contracting, LLC	Base Bid	\$ 217,780.00	60
10900 Hefner Point Dr.,	Alternate 1	\$ 115,880.00	60
Suite 202	Total	\$ 333,660.00	
Oklahoma City, OK 73120			

Bid meets or exceeds all major specifications: X YES NO
Bid meets or exceeds all minor specifications: X YES NO

DEVIATIONS: Did meet the specifications

RECOMMENDATION: Award a Contract to Goins Enterprises Inc, in the amount of \$ 249,900.00 for base bid and alternate 1

PURCHASING CARD CLAIMS LIST

2-5-13

FUND 10 DEPT 100 - ADMINISTRATIVE SERVICES

ACE HARDWARE	PO0111074 VARNISH/FINISH BRUSH	27.48
AMERICAN 00171642305752	PO0111074 AIRFARE/EAPA CONF/W BOX	389.80
APA - MEMBERSHIP ONLIN	PO0111074 AICP PRORATED DUES/W BOX	63.75
AT&T DATA	PO0111074 IPAD DATA PLAN 1/13	110.00
ATHEY LUMBER COMPANY	PO0111074 STAIN MARKER	5.99
BB MACHINE & SUPPLY IN	PO0111074 PULLEYS/BELTS	231.61
BEST WESTERN CIMARRONH	PO0111074 LODGING/CITY MANAGERS WINTER CONF/J RILEY	239.98
BRADFORD INDUS SUPPLY	PO0111074 A/C FILTERS	154.94
CTO*GOTOMEETING.COM	PO0111074 SOFTWARE SUPPORT 1/13	49.00
ENID WINNELSON CO	PO0111074 CAULK/TANK LEVER/FLAPPER	15.36
JIMMYS EGG - ENID	PO0111074 MEAL (3)/DEPT MEETING	25.64
KANSAS RECREATION AND	PO0111074 CPSI INSPECTOR COURSE/K BLACKBURN	480.00
LOWES #00205*	PO0111074 WOOD FILER/SCREWS/DRILL BIT	93.39
MAZZIO S 034 Q53	PO0111074 MEAL/CITY MGRS WINTER CONF/J RILEY	11.25
PANERA BREAD #2828	PO0111074 MEAL/CITY MGRS WINTER CONF/J RILEY	24.26
SCHIEBERS DONUTS & DEL	PO0111074 MEAL (2)/PARK MEETING	14.50
UNITED SUPERMARKET 3	PO0111074 DRINKS/ADMIN	19.96
ADMINISTRATIVE SERVICES TOTAL		1,956.91

FUND 10 DEPT 110 - PERSONNEL SERVICES

AT&T DATA	PO0111074 IPAD DATA PLAN 1/13	30.00
J & P SUPPLY CO	PO0111074 TOILET PAPER/BOWL CLEANER/TOWELS	500.11
NATL PUBLIC EMPLOYER L	PO0111074 REGISTRATION FEE/S KEY	559.00
WESTIN RIVERWALK	PO0111074 LODGING/CONFERENCE/S KEY	220.66
PERSONNEL SERVICES TOTAL		1,309.77

FUND 10 DEPT 120 - LEGAL SERVICES

BARNES&NOBLE*COM	PO0111074 CODE BOOK	66.99
OFFICE DEPOT #1080	PO0111074 CHAIR CASTERS/HEADSET	93.93
STAPLES 00106633	PO0111074 CHAIR MAT	59.99
W W GRAINGER 916	PO0111074 LIFE SAFETY CODE BOOK	110.03
LEGAL SERVICES TOTAL		330.94

FUND 10 DEPT 200 - GENERAL GOVERNMENT

AT&T DATA	PO0111074 IPAD DATA PLAN 1/13 (7)	175.00
CHICK-FIL-A #00208	PO0111074 MEAL/COMMISSIONERS MEETING	172.00
KATYS PANTRY	PO0111074 MEAL/COMMISSIONERS MEETING	296.70
T-SHIRT & MONOGRAMMING	PO0111074 LOGO JACKET/MAYOR SHEWEY	52.75
WAL-MART #0499	PO0111074 VENDING MACHINE SNACKS	126.98
GENERAL GOVERNMENT TOTAL		823.43

FUND 10 DEPT 210 - ACCOUNTING

CHICK-FIL-A #02033	PO0111074 MEAL/BUDGET WORKSHOP (7)	26.64
LOGANS	PO0111074 MEAL/BUDGET WORKSHOP (8)	149.96
STAPLES 00106633	PO0111074 TAX FORMS	139.95
ACCOUNTING TOTAL		316.55

FUND 10 DEPT 240 - WAREHOUSE

CDW GOVERNMENT	PO0111074 PRINTER	546.71
----------------	-------------------	--------

PURCHASING CARD CLAIMS LIST

2-5-13

INDUSTRIAL MATERIALS	PO0111074 DEADBOLT/PUSH PLATE	78.45
JUMBO FOODS	PO0111074 WATER/COFFEE/CREAMER	31.75
STAPLES 00106633	PO0111074 SURGE PROTECTOR	19.99
	WAREHOUSE TOTAL	676.90

FUND 10 DEPT 250 - INFORMATION TECHNOLOGY

AMAZON MKTPLACE PMTS	PO0111074 IPAD ACCESSORIES	71.13
APL*APPLE ITUNES STORE	PO0111074 ICLOUD DATA STORAGE	20.00
AT&T DATA	PO0111074 IPAD DATA PLAN 1/13 (2)	55.00
CRUCIAL.COM	PO0111074 RAM UPGRADE	119.98
FASTENAL COMPANY01	PO0111074 CONCRETE ANCHORS	8.42
KELBY TRAINING	PO0111074 ADOBE PHOTOSHOP TRAINING	89.00
THE UPS STORE 5063	PO0111074 SHIPPING FEES	64.70
T-SHIRT & MONOGRAMMING	PO0111074 LOGO SHIRTS (5)	139.85
	INFORMATION TECHNOLOGY TOTAL	568.08

FUND 10 DEPT 300 - COMMUNITY DEVELOPMENT

UPTOWN SUBS	PO0111074 MAPC MEAL	69.43
	COMMUNITY DEVELOPMENT TOTAL	69.43

FUND 10 DEPT 400 - ENGINEERING

AMAZON MKTPLACE PMTS	PO0111074 PROJECTOR LAMP REPLACEMENT	171.61
APL*APPLE ITUNES STORE	PO0111074 IPAD APP	29.98
AT&T DATA	PO0111074 IPAD DATA PLAN 1/13	25.00
CDW GOVERNMENT	PO0111074 HARD DRIVES	156.60
FASTENAL COMPANY01	PO0111074 TAPE	19.95
OKLAHOMA SOCIE00 OF 00	PO0111074 2013 OSLS CONVENTION FEE (2)	470.00
OKLAHOMA SOCIE00 OF 00	PO0111074 2013 OSLS MEMBERSHIP FEE/C STREITBERGER	50.00
	ENGINEERING TOTAL	923.14

FUND 10 DEPT 700 - MANAGEMENT SERVICES

AT&T DATA	PO0111074 IPAD DATA PLAN 1/13 (3)	80.00
AT&T O519 8327	PO0111074 IPHONE CASE	80.00
BOB HOWARD PDC	PO0111074 V1017 PIN/BUSHINGS	38.56
BRADFORD INDUS SUPPLY	PO0111074 POLY AIR FILTERS	25.35
LOCKE SUPPLY - ENID	PO0111074 CLOSET KIT/URINAL KIT/P TRAP	24.18
OREILLY AUTO 00001883	PO0111074 V1017 WINDOW HANDLE	8.99
PERFORMANCE AUDIO	PO0111074 V650 POWER WINDOWS	650.00
RED LOBSTER US00008284	PO0111074 MEAL (2)/DEPT MEETING	43.88
STAPLES 00106633	PO0111074 HP CARTRIDGE/PENS/PENCILS	177.48
WAL-MART #0499	PO0111074 COFFEE/WATER	66.86
WESTERN SIZZLIN	PO0111074 MEAL/DEPT MEETING	91.49
	MANAGEMENT SERVICES TOTAL	1,286.79

FUND 10 DEPT 710 - VEHICLE MAINTENANCE

BOB HOWARD PDC	PO0111074 V1017 HUB CAP	103.11
EVAN'S EXPRESS	PO0111074 BANDAIDS	11.53
MAC TOOLS	PO0111074 BELT EXTRACTOR SET	219.99
MUNN SUPPLY	PO0111074 V627 BOLT	7.32
OREILLY AUTO 00001883	PO0111074 GASKET SHEETS	11.98
OREILLY AUTO 00001883	PO0111074 V1017 FUEL PUMP/FUEL FILTER	254.89

PURCHASING CARD CLAIMS LIST

2-5-13

SOUTHWEST TRUCK PARTS	PO0111074 ELBOW AIR LINE	5.66
SOUTHWEST TRUCK PARTS	PO0111074 V618 SHIFT VALVE	105.15
STAPLES 00106633	PO0111074 PRINTER/CARTRIDGES	182.97
	VEHICLE MAINTENANCE TOTAL	902.60

FUND 10 DEPT 730 - PARK

AIRGAS CENTRAL	PO0111074 BLADE	139.98
ALBRIGHT STEEL & WIRE	PO0111074 CORNER POSTS	112.63
AT&T DATA	PO0111074 IPAD DATA PLAN 1/13	30.00
ATHEY LUMBER COMPANY	PO0111074 SANDING PADS	8.58
BAKERS ALTERNATOR & ST	PO0111074 V538 STARTER	119.72
BOB HOWARD PDC	PO0111074 V103 BUSHING	4.78
BOB HOWARD PDC	PO0111074 V604 ARMREST	50.48
LOWES #00205*	PO0111074 CHIPPER BAR/LIGHTS/PAINT/BENCHES/HEATER	647.89
OREILLY AUTO 00001883	PO0111074 PAINT REDUCER	177.05
OREILLY AUTO 00001883	PO0111074 V604 WATER PUMP/FAN CLUTCH	111.55
P & K EQUIPMENT	PO0111074 V568 WHEEL	713.83
ROBERTS TRUCK CENTER	PO0111074 V929 RING/BALL	28.43
STAPLES 00106633	PO0111074 HP CARTRIDGE	101.79
STUART C IRBY	PO0111074 FLAT BLANK COVER	0.78
WINFIELD SOLUTIONS ENI	PO0111074 TORDON	117.60
YELLOW HOUSE MACHINERY	PO0111074 V934 IDLER	677.76
YELLOW HOUSE MACHINERY	PO0111074 V940 WINDOW/LOCTITE	229.00
ZALOUDEK IMPLEMENT CO	PO0111074 BOAT PADDLES	35.98
	PARK TOTAL	3,307.83

FUND 10 DEPT 740 - STREET

2000 CED	PO0111074 LIGHT BULBS	33.36
ALBRIGHT STEEL & WIRE	PO0111074 ANGLE IRON	35.58
AT&T DATA	PO0111074 IPAD DATA PLAN 1/12	30.00
ATW OF ENID # 01	PO0111074 CHAIN	11.90
BAKERS ALTERNATOR & ST	PO0111074 V152 ALTERNATOR	176.51
BB MACHINE & SUPPLY IN	PO0111074 V129 HYDRAULIC PUMP	423.00
BB MACHINE & SUPPLY IN	PO0111074 V131 ADAPTER	5.40
FLAMING AUTO SUPPLY CO	PO0111074 V111 BALL JOINT	44.99
FLAMING AUTO SUPPLY CO	PO0111074 V130 OIL FILTER	12.19
FLAMING AUTO SUPPLY CO	PO0111074 V358 AIR FILTER	79.59
HYDRAFIL INC	PO0111074 V112 HYDRAULIC FILTER	127.85
OREILLY AUTO 00001883	PO0111074 V131 FIBERGLASS RESIN	14.74
SIGNWAREHOUSE.COM	PO0111074 INK/PRINTER CLEANING KIT/LAMINATING FILM	886.90
SOUTHWEST TRUCK PARTS	PO0111074 V112 AIR HOSE	18.02
SOUTHWEST TRUCK PARTS	PO0111074 V120 BRAKE ADJUSTER	92.93
SOUTHWEST TRUCK PARTS	PO0111074 V131 HOSE	115.01
STAPLES 00106633	PO0111074 SCANNER/PRINTER CARTRIDGES/CALENDARS	371.75
STUART C IRBY	PO0111074 DOWNTOWN LIGHTING PHOTO CELLS	179.26
WW GRAINGER	PO0111074 STREET LIGHT BULBS	565.66
YELLOW HOUSE MACHINERY	PO0111074 V161 SCREW BOLT/WASHERS	5.18
	STREET TOTAL	3,229.82

FUND 10 DEPT 750 -MAINT & TECH SERVICES

2000 CED	PO0111074 WIRE FITTINGS/METAL LAMP	547.02
----------	------------------------------------	--------

PURCHASING CARD CLAIMS LIST

2-5-13

ACE HARDWARE	PO0111074 WASTE BASKET/DUST PAN/BROOM	50.92
AIRGAS CENTRAL	PO0111074 FLAME RETARDANT JACKET	30.24
AMAZON.COM	PO0111074 EXTENSION CORDS	87.00
AT&T DATA	PO0111074 IPAD DATA PLAN 1/13	30.00
ATHEY LUMBER COMPANY	PO0111074 TRIM	357.84
BELLEVILLE SHOE MFG	PO0111074 BOOTS/D SMITH	201.00
BOB HOWARD PDC	PO0111074 V1038 PIGTAIL	32.77
ENID WINNELSON CO	PO0111074 SINK/FAUCET/STRAINERS	413.34
J & P SUPPLY CO	PO0111074 TOWELS/TISSUE/SOAP/WIPES	351.48
LOCKE SUPPLY - ENID	PO0111074 FITTINGS	29.03
LOWES #00205*	PO0111074 LAMINATE/PARTICAL BOARD/STAIN/BLADES	967.08
OKLAHOMA GLASS & WALLP	PO0111074 GLASS	33.84
OREILLY AUTO 00001883	PO0111074 V1038 HEADLIGHT SWITCH	16.36
UPS (800) 811-1648	PO0111074 SHIPPING FEES	21.08
	MAINT & TECH SERVICES TOTAL	3,169.00

FUND 10 DEPT 900 - LIBRARY

AMAZON MKTPLACE PMTS	PO0111074 GARAGE DOOR KEYPAD	47.23
BAKER-TAYLOR	PO0111074 BOOKS (19)	285.59
BRODART SUPPLIES	PO0111074 ACRYLIC SLATWALL SHELVES (14)	307.09
CDW GOVERNMENT	PO0111074 FLATBED SCANNERS (2)	163.62
CENTER POINT LARGE PRI	PO0111074 BOOKS (8)	172.56
COPIERS PLUS LLC	PO0111074 COPIER/PRINTER MAINT.SERV.12/12	244.12
CTC JANITORIAL	PO0111074 BOWL CLEANER	59.80
DART/TARTAN/MCNAUGH	PO0111074 BOOKS (35)	543.84
DEMCO INC	PO0111074 MAG COVERS/BOOKMARKS/LABELS/BOOKENDS	155.50
DISCOUNT ELECTRONICS M	PO0111074 COMPUTER POWER SUPPLY	67.71
GAYLORD BROS INC	PO0111074 PICTURE FRAMES/HARDWARE	378.79
HTTP GIMLET DOT US	PO0111074 MONTHLY REFERENCE STATISTICS SERVICE	10.00
J & P SUPPLY CO	PO0111074 PAPER TOWELS/TISSUE/MATS	312.54
KOHLER COMPANY INC	PO0111074 REBUILD KIT/AUTO FLUSHER	146.05
LOWES #00205*	PO0111074 WOOD SLAT/PLIERS/STRAP WRENCH	58.06
MERRIFIELD OFFICE P	PO0111074 STAMP/INK CARTRIDGE/RECEIPT TAPE	88.68
MOTOPHOTO	PO0111074 DIGITIZATION BOOTH PHOTO	29.19
NILODOR INC.	PO0111074 AUTO DISPENSE AIR FRESHNER	82.85
QUILL CORPORATION	PO0111074 TONER/PENS/LABELS/HILITERS	223.31
RESEARCH DIVISION	PO0111074 MICROFILM FEES(4)	145.00
STAPLES 00106633	PO0111074 FOLDING CRATE	29.99
SYX*GLOBALINDUSTRIALEQ	PO0111074 CHAIR DOLLY	393.98
TCD*GALE	PO0111074 BOOKS (15)	335.10
THYSSENKRUPP ELEV ORAC	PO0111074 ELEVATOR MAINTENANCE 1/13	228.89
ULINE *SHIP SUPPLIES	PO0111074 MAILING ENVELOPES	102.00
WAL-MART #0499	PO0111074 WIPES/TOILET BOWL GEL	80.73
	LIBRARY TOTAL	4,692.22

FUND 14 DEPT 145 - HEALTH FUND

4 ALL PROMO'S / K-READ	PO0111074 HEALTH FAIR/BAGS/BOTTLES	844.95
	HEALTH FUND TOTAL	844.95

FUND 20 DEPT 205 - AIRPORT

2000 CED	PO0111074 LIGHT FIXTURES	82.00
----------	--------------------------	-------

PURCHASING CARD CLAIMS LIST

2-5-13

8008089000 PIONEERTELE	PO0111074 MONTHLY PHONE SERVICE 1/13	25.22
JAMIE'S BARNSTORMERS	PO0111074 MEAL (8)/DEPT MEETING	75.20
STAPLES 00106633	PO0111074 INK CARTRIDGES/PENS	143.25
TRUCKPRO INC 034	PO0111074 V804 ALTERNATOR	213.89
	AIRPORT TOTAL	539.56

FUND 22 DEPT 225 - GOLF

ACE HARDWARE	PO0111074 PAINT THINNER/PAINT	49.91
ATW OF ENID # 01	PO0111074 SHOP RAGS/HOSE NOZZLE	27.96
LOWES #00205*	PO0111074 PAINT/TARPS/STRAPS	307.64
MUNN SUPPLY	PO0111074 WELDING RODS/GRINDING WHEELS/BRIDGES	247.71
STAPLES 00106633	PO0111074 CALENDAR/PENS	41.99
SUDDENLINK-NAT'L SITE	PO0111074 MONTHLY INTERNET SERVICE 1/13	49.95
YELLOW BOOK USA	PO0111074 ADVERTISING 1/13	59.00
	GOLF TOTAL	784.16

FUND 31 DEPT 230 - UTILITY BILLING

STAPLES 00106633	PO0111074 LABEL TAPE	15.98
LOWES #00205*	PO0111074 GLUE/LAMINATE	110.14
STAPLES 00106633	PO0111074 FAX MACHINE TONER	143.99
WAL-MART #0499	PO0111074 DEODORIZER/CLEANING	27.02
	UTILITY BILLING TOTAL	297.13

FUND 31 DEPT 760 - SOLID WASTE

AMAZON MKTPLACE PMTS	PO0111074 SAFETY CABINET	799.58
AMAZON.COM	PO0111074 IPAD CASES (5)	499.95
APL*APPLE ITUNES STORE	PO0111074 IPAD APPS	149.90
AT&T DATA	PO0111074 IPAD DATA PLAN 1/13 (7)	194.99
BB MACHINE & SUPPLY IN	PO0111074 CONVEYOR FASTENER/RECYCLE CENTER	251.88
BB MACHINE & SUPPLY IN	PO0111074 V224 HOSE	61.67
BB MACHINE & SUPPLY IN	PO0111074 V239 O-RING	13.62
BB MACHINE & SUPPLY IN	PO0111074 V252 BEARING	188.91
BB MACHINE & SUPPLY IN	PO0111074 V256 TIP	23.32
BLAZE'S BBQ	PO0111074 MEAL (3)/EMP APPRECIATION	27.97
CANTINA LAREDO 187	PO0111074 MEAL (2)/SOLID WASTE COUNCIL MEETING	28.28
ENID MACK SALES INC	PO0111074 V224 COOLING HOSE	24.82
ENID NEW HOLLAND	PO0111074 V252 GEAR	156.97
FASTENAL COMPANY01	PO0111074 CONVEYOR BIT/RECYCLE CENTER	20.24
FLAMING AUTO SUPPLY CO	PO0111074 V231 SWITCH	21.98
FLAMING AUTO SUPPLY CO	PO0111074 V238 LAMP	74.34
FLAMING AUTO SUPPLY CO	PO0111074 V239 AG LAMP	31.99
FLAMING AUTO SUPPLY CO	PO0111074 V255 AIR/FUEL/OIL FILTER	236.41
FLAMING AUTO SUPPLY CO	PO0111074 V608 HYDRAULIC FILTER	26.17
HOLTZ INDUSTRIES INC	PO0111074 V238 JOYSTICK	333.85
JUMBO FOODS	PO0111074 CLEANER	3.19
NATIONAL PEN	PO0111074 PENS (150) LOGO	158.90
OREILLY AUTO 00001883	PO0111074 RECYCLE CENTER HARDENER	3.40
PAYPAL *MASTERSGROUP	PO0111074 IPAD SCREEN PROTECTORS (2)	7.38
ROBERTS TRUCK CENTER	PO0111074 V216 EGR VALVE/GASKETS	468.83
ROBERTS TRUCK CENTER	PO0111074 V232 BLOCK HEATER	66.48
STAPLES 00106633	PO0111074 IPAD STYLUS (5)/INK	176.74

PURCHASING CARD CLAIMS LIST

2-5-13

T-SHIRT & MONOGRAMMING	PO0111074 LOGO SHIRTS (6)	181.98
YELLOW HOUSE MACHINERY	PO0111074 V216 HYDRAULIC FILTERS	263.14
ZAGG	PO0111074 IPAD SCREEN SHIELD PROTECTORS (5)	191.78
	SOLID WASTE TOTAL	4,688.66

FUND 31 DEPT 790 - WATER

CDW GOVERNMENT	PO0111074 PRINTER	546.71
2000 CED	PO0111074 ELECTRICAL FITTINGS	116.72
ALLIED ELECTRONICS INC	PO0111074 FUSES	200.48
AT&T DATA	PO0111074 IPAD DATA PLAN 1/13	30.00
BELL SUPPLY - ENID OK	PO0111074 COUPLINGS	98.16
BOB HOWARD PDC	PO0111074 V307 AC CONTOL HEAD	325.27
BRADFORD INDUS SUPPLY	PO0111074 IGNITION CONTROL	125.41
DEPT OF ENV QUALITY	PO0111074 DEQ LICENSE TEST (2)	124.00
FLAMING AUTO SUPPLY CO	PO0111074 V302 OIL SEAL	18.09
STEVENS FORD LINCOLN M	PO0111074 V302 SEAL	9.30
	WATER TOTAL	1,594.14

FUND 31 DEPT 795 - WATER MANAGEMENT SERVICES

2000 CED	PO0111074 JUNCTION BOXES/CORD/STRUT/FUSES	845.73
ACE HARDWARE	PO0111074 TRIM LINE	13.99
AIRGAS CENTRAL	PO0111074 GRINDING WHEEL	23.74
AT&T DATA	PO0111074 IPAD DATA PLAN 1/13 (2)	60.00
ATHEY LUMBER COMPANY	PO0111074 MAPLE MOULDING	214.02
ATW OF ENID # 01	PO0111074 TOOL BOX LATCH	19.99
BOB HOWARD PDC	PO0111074 V361 HOOD/FENDER/HEADLIGHT/BULB	859.11
BRADFORD INDUS SUPPLY	PO0111074 TRANSFORMERS/THERMOSTATS/CONTACTORS	302.55
CWI*CAMPING WORLD	PO0111074 WIRELESS HITCH CAMERAS (4)	614.96
ENID WINNELSON CO	PO0111074 GALVANIZED CAPS/QUICK CAPS	54.22
FLAMING AUTO SUPPLY CO	PO0111074 WRENCHES	51.48
LAMPTON WELDING SUPPLY	PO0111074 GLOBAL MIG	75.46
LOWES #00205*	PO0111074 LOCKS	14.97
LOWES #00205*	PO0111074 V343 TOOL BOX	169.00
MUNN SUPPLY	PO0111074 ARGON	40.50
OREILLY AUTO 00001743	PO0111074 FLASH LIGHTS	53.23
OREILLY AUTO 00001743	PO0111074 V343 WINDSHIELD WIPERS	36.78
OREILLY AUTO 00001883	PO0111074 V364 SPARK PLUGS	25.44
OREILLY AUTO 00001883	PO0111074 V631 STARTER	148.73
RIB CRIB 44	PO0111074 MEAL (2)/DEPT MEETING	29.64
ROBERTS TRUCK CENTER	PO0111074 V127 SWITCH	109.07
SHERWIN WILLIAMS #7185	PO0111074 PAINT SUPPLIES	18.28
STAPLES 00106633	PO0111074 CHAIRS/INK CARTRIDGES	501.75
STUART C IRBY	PO0111074 LIGHT BULBS	21.84
TW TIRE ENID	PO0111074 V314 TIRES	319.00
UNITED LABORATORIES	PO0111074 BIO BAGS (6)	285.93
UPS (800) 811-1648	PO0111074 SHIPPING FEES	21.05
USPS 39282704133607748	PO0111074 SHIPPING FEES	6.20
YELLOW HOUSE MACHINERY	PO0111074 V345 OIL FILTERS	60.79
	WATER MANAGEMENT SERVICES TOTAL	4,997.45

FUND 43 DEPT 435 - STORMWATER

PURCHASING CARD CLAIMS LIST

2-5-13

ALBRIGHT STEEL & WIRE	PO0111074 F-1305A STRIP METAL	128.64
	STORMWATER TOTAL	128.64

FUND 50 DEPT 505 - 911

SPECIALITY ELECTRONICS	PO0111074 CABLE	59.00
LAHOMA CORNER 07017742	PO0111074 V2113 FUEL	22.70
	911 TOTAL	81.70

FUND 51 DEPT 515 - POLICE

ACE HARDWARE	PO0111074 AIR FILTERS	5.97
AMAZON MKTPLACE PMTS	PO0111074 TOURNIQUETS	447.54
BOB HOWARD PDC	PO0111074 V2054 HOOD STOPS	15.98
BOB HOWARD PDC	PO0111074 V26 HINGE	58.02
CREATIVE SERVICES OF N	PO0111074 POLICE STICKERS	638.95
FBI NATIONAL ACADEMY A	PO0111074 FBINAA MEMBERSHIP/D GRASSINO	75.00
FLAMING AUTO SUPPLY CO	PO0111074 V24 FAN ASSEMBLY	179.09
LITTLE CAESARS 0129 00	PO0111074 MEAL/BIKE ROUTE COMMITTEE MEETING	20.00
LOCKE SUPPLY - WHC ENI	PO0111074 PLEATED FILTERS	62.11
NORTHCUTT CHEVROLET BU	PO0111074 V2150 AIRBAG REPAIR	692.41
NWTC WEB REGISTRATION	PO0111074 REGISTRATION (2)/TASER SCHOOL	350.00
OREILLY AUTO 00001883	PO0111074 BODY FILLER/ DENT GLAZE	145.57
OREILLY AUTO 00001883	PO0111074 V2011 OIL LINE	32.39
OREILLY AUTO 00001883	PO0111074 V2034 ALTERNATOR	169.99
OREILLY AUTO 00001883	PO0111074 V2050 BRAKE PADS	105.44
QT 55 01000553	PO0111074 V2033 FUEL/EOD TRANSPORT	15.50
SKYLINE SPECIALTIES LL	PO0111074 DARE SUPPLIES	304.50
STAPLES 00106633	PO0111074 500GB HARD DRIVES (2)	119.98
STEVENS FORD LINCOLN M	PO0111074 V2054 AIRBAG REPAIR	160.50
STEVENS FORD LINCOLN M	PO0111074 V2185 FUEL DOOR SWITCH	29.41
STEVENS FORD LINCOLN M	PO0111074 V26 SEATBELT DIAGNOSTIC	107.00
UPS (800) 811-1648	PO0111074 SHIPPING FEES	1,275.57
USPS 39282704133607748	PO0111074 SHIPPING FEES	14.76
WAL-MART #0499	PO0111074 EVIDENCE SAFE/HARD DRIVE	196.88
WWW GUNBROKER COM	PO0111074 SHIPPING FEES	131.09
	POLICE TOTAL	5,353.65

FUND 65 DEPT 655 - FIRE

AT&T DATA	PO0111074 IPAD DATA PLAN 1/13	50.00
ATW OF ENID # 01	PO0111074 AIR HOSE/COUPLER KIT/BLOW GUN	39.96
FASTENAL COMPANY01	PO0111074 HANDLE/SOCKET CAP/WASHERS	19.44
GOSCRIBE.COM	PO0111074 TAGS (50)/RINGS (50)	46.95
J & P SUPPLY CO	PO0111074 TOWELS/CLEANER/TRASH CAN LINERS	171.11
LOWES #00205*	PO0111074 DRILL/DRILL BIT SET/CHAIN/MICROWAVE	363.77
LYNDA.COM	PO0111074 ONLINE TRAINING LIBRARY	37.50
NATL. REGISTRY OF EMTS	PO0111074 NATIONAL EMT CERTIFICATION (34)	565.00
NORTHCUTT CHEVROLET BU	PO0111074 VALVE STEM SENSOR	55.05
PATC	PO0111074 WEBINAR (5) FIRE MARSHALS	70.00
PAYPAL *DEPT1225	PO0111074 VOICE AMPS (6)	150.00
REAL TIME COMMUNICATIO	PO0111074 HAZMAT INTERNET SERVICE 1/13	129.99
RED LOBSTER US00008284	PO0111074 MEAL/FIRE CHIEFS CONFERENCE/B BURKHART	22.70
SADDORIS COMPANIES INC	PO0111074 SHOP TOWELS	106.83

PURCHASING CARD CLAIMS LIST

2-5-13

SOUTHERN UNIFORM & EQU	PO0111074 NAMETAG	15.25
STAPLES 00106633	PO0111074 BINDERS/TABS	12.97
STUART C IRBY	PO0111074 FIRE STATION 3 RECEPT POWER/POWER CORD REEL	31.60
SURPLUS FIRE EQUIPMENT	PO0111074 VOICE AMPLIFIERS	3,340.00
THE UPS STORE 5063	PO0111074 SHIPPING FEES	29.76
US GLOBAL SAT	PO0111074 CABLE SET (12)	155.88
WAL-MART #0499	PO0111074 VACUUM CLEANER (2)	95.68
	FIRE TOTAL	5,509.44

FUND 99 DEPT 995 - EPTA

CDW GOVERNMENT	PO0111074 HARD DRIVES	682.90
FLAMING AUTO SUPPLY CO	PO0111074 V8566 HEADLIGHT BULB	50.97
HASTINGS 9675 ENID 896	PO0111074 EXCEL 2010 MANUAL	24.57
STAPLES 00106633	PO0111074 INK TONER CARTRIDGE	56.29
	EPTA TOTAL	814.73

JP MORGANCHASE CLAIMS LIST TOTAL \$ 49,197.62

PURCHASE ORDER CLAIMS LIST

2/5/2013

FUND 10 DEPT 000 - N.A.

01-00542	GREAT PLAINS COOPERATIVE	PO0111124	UNLEADED FUEL/ST	\$22,432.67
01-00571	SOUTHERN TIRE MART	PO0111122	TIRES/ST	\$415.00
01-01338	J & P SUPPLY, INC.	PO0110967	HAND CLEANER/ST	\$116.06
01-01338	J & P SUPPLY, INC.	PO0111110	WIPERS/ST	\$198.80
01-01472	STAPLES ADVANTAGE	PO0110991	PAPER/BINDERS/TAPE/ST	\$441.78
01-02123	BRADFORD INDUSTRIAL SUPPLY CORP.	PO0111116	FILTERS/ST	\$62.60
01-03253	YELLOWHOUSE MACHINERY COMPANY	PO0110968	FILTERS/ST	\$789.42
01-03315	RED ROCK DISTRIBUTING CO.	PO0110755	UNLEADED FUEL/ST	\$19,867.12
01-03315	RED ROCK DISTRIBUTING CO.	PO0110756	DIESEL/ST	\$23,135.00
01-03620	MATOUSEK VETERINARY CLINIC	PO0110936	REIMB/SPAY/NEUTER	\$165.00
01-03718	BUSINESS WORLD, INC.	PO0111083	COPIER MAINTENANCE 1/13	\$66.20
01-03907	POLSON, NANCY	PO0111029	REIMB/NEUTER	\$75.00
01-05134	ENID NEWS & EAGLE	PO0111114	P-1303 PUBLICATION	\$298.33
01-06019	FLAMING AUTO SUPPLY CO., INC.	PO0110753	FILTERS/BLADES/ST	\$893.79
01-06019	FLAMING AUTO SUPPLY CO., INC.	PO0111120	FILTERS/ST	\$265.62
01-08018	HOTSY OF OKLAHOMA, INC.	PO0111106	SOAP/ST	\$204.00
01-08022	HUGHES LUMBER CO., LLC	PO0111108	CEMENT/ST	\$157.00
01-08123	HOLDINGS FOOD STORE, INC.	PO0110998	DIESEL/ST	\$23,108.55
01-13017	MUNN SUPPLY, INC.	PO0110757	OXYGEN/ARGON/ST	\$132.36
01-13017	MUNN SUPPLY, INC.	PO0110973	ACETYLENE/ARGON/CO2 CYLINDERS	\$278.09
01-15051	OK TAX COMMISSION	PO0110841	AIRPORT SALES TAX 12/12	\$50.01
01-15083	OK CONTRACTORS SUPPLY	PO0110965	COUPLINGS/CLAMPS/ST	\$3,283.46
01-15083	OK CONTRACTORS SUPPLY	PO0111123	COUPLINGS/CLAMPS/ST	\$3,905.00
01-15125	OK GAS & ELECTRIC	PO0110762	MONTHLY SERVICE 12/12	\$77,857.28
01-15125	OK GAS & ELECTRIC	PO0110764	MONTHLY SERVICE 12/12	\$1,295.62
01-15125	OK GAS & ELECTRIC	PO0110814	MONTHLY SERVICE 12/12	\$522.59
01-15125	OK GAS & ELECTRIC	PO0111098	MONTHLY SERVICE 12/12	\$208.56
01-15125	OK GAS & ELECTRIC	PO0111099	MONTHLY SERVICE 1/13	\$39,079.88
01-15127	OK NATURAL GAS	PO0110768	MONTHLY SERVICE 12/12	\$3,886.41
01-15127	OK NATURAL GAS	PO0111085	MONTHLY SERVICE 1/13	\$297.13
01-15127	OK NATURAL GAS	PO0111097	MONTHLY SERVICE 1/13	\$5,185.93
01-15132	O'REILLY AUTO PARTS, INC.	PO0110758	STARTER FLUID/OIL/ST	\$414.36
01-18019	RAM PRODUCTS, INC.	PO0111112	CABLE TIES/LUGS/ST	\$653.01
01-19112	STEINERT, PHIL	PO0110935	REIMB/SPAY/NEUTER	\$100.00
01-23055	WHEATLAND ANIMAL CLINIC	PO0110862	REIMB/SPAY/NEUTER	\$1,280.00
01-33090	CAT CLINIC, INC.	PO0110861	REIMB/SPAY/NEUTER	\$310.00
01-50710	OK MUNICIPAL ASSURANCE GROUP	PO0111089	PROPERTY/AUTO LIABILITY	\$1,418.57
01-53300	ANIMAL CARE OF ENID, INC.	PO0110815	REIMB/SPAY/NEUTER	\$1,129.00
01-55120	QUILL CORPORATION, INC.	PO0110776	TISSUE/ST	\$13.08
01-64080	AIRGAS	PO0111115	CUTOFF WHEEL/ST	\$83.18
01-67250	FRIENDS OF THE LIBRARY	PO0110786	QUARTERLY PROCEEDS	\$1,900.40
01-67400	WESTEL	PO0110772	MONTHLY SERVICE 12/12	\$477.39
01-80343	FENTRESS OIL COMPANY, INC.	PO0111121	OIL/ST	\$1,937.86
			N.A. TOTAL	\$238,391.11

FUND 10 DEPT 100 - ADM. SERVICES

01-00536	WILLIAMS BROADCASTING, LLC	PO0111075	ADVERTISEMENT	\$600.00
01-00536	WILLIAMS BROADCASTING, LLC	PO0111092	ADVERTISEMENT	\$1,360.00
01-01163	ADVANCED WATER SOLUTIONS	PO0110966	BOTTLED WATER	\$16.25
01-01472	STAPLES ADVANTAGE	PO0110991	MARKERS	\$5.49
01-01783	JP MORGAN CHASE	PO0111074	CHASE PAYMENT	\$1,956.91
01-02790	GLOBAL SPECTRUM	PO0110924	MEAL (16)	\$461.90
01-02855	FRIESEN DESIGN, INC.	PO0111076	EMAIL DESIGN	\$320.00
01-03905	EQUAL OPPORTUNITY COUNCIL, INC.	PO0111013	PUBLICATIONS	\$995.00
01-16004	PDQ PRINTING	PO0111012	FACTS SHEET	\$800.00
01-16145	PETTY CASH	PO0111030	REIMB/MILEAGE/J RILEY	\$110.73
01-16145	PETTY CASH	PO0111042	REIMB/MILEAGE/J RILEY	\$110.77
01-16145	PETTY CASH	PO0111042	REIMB/WATER/K DEMBEK	\$9.45
01-16145	PETTY CASH	PO0111044	REIMB/MILEAGE/J RILEY	\$98.15
01-20048	T-SHIRT STORE, INC.	PO0111014	LOGO SHIRTS (2)	\$60.66
01-20048	T-SHIRT STORE, INC.	PO0111103	LOGO JACKET	\$28.75
			ADM. SERVICES TOTAL	\$6,934.06

FUND 10 DEPT 110 - HUMAN RESOURCES

01-01783	JP MORGAN CHASE	PO0111074	CHASE PAYMENT	\$1,309.77
01-02621	PREMIERSOURCE, LLC	PO0110851	1ST QTR 401K FEES	\$5,548.53
01-03053	NORTHWEST SHREDDERS, LLC	PO0110735	SECURITY CONSOLE	\$20.00
01-03469	OKLAHOMA EMPLOYMENT SECURITY COMMI	PO0110721	UNEMPLOYMENT BENEFITS 1ST QTR	\$65.29
01-03526	FAITH DECORATIVE LIGHTING, INC.	PO0110722	BULB/SHINGLE TAB/WIRE/LABOR	\$656.50
01-03611	ICIMS, INC.	PO0110923	SUBSCRIPTION FEES 1/13	\$3,000.00
01-03904	GAINES, SAMANTHA	PO0110999	TUITION REIMB/SPRING 2013	\$1,000.00
01-04129	OK DEPT. OF CORRECTIONS	PO0110737	INMATE/VAN USAGE 12/12	\$659.63
01-05017	ENID TYPEWRITER CO., INC.	PO0110940	DIGITAL PRINTS	\$28.71
01-15004	OK EMPLOYMENT SECURITY COMMISSION	PO0110849	4TH QTR UNEMPLOYMENT TAX	\$9,799.00
01-23010	WALLER GLASS COMPANY, INC.	PO0110985	DISPLAY CABINETS (2)	\$970.00
01-58431	CDW GOVERNMENT, INC.	PO0110941	WIRELESS HEADSET	\$187.78
01-79720	WELLS FARGO	PO0111077	401K FEES 10/12-12/12	\$625.00
01-79720	WELLS FARGO	PO0111077	401K FEES 7/12-9/12	\$625.00
01-79720	WELLS FARGO	PO0111077	401K FEES 4/12-6/12	\$625.00
HUMAN RESOURCES TOTAL				\$25,120.21

FUND 10 DEPT 120 - LEGAL SVCS.

01-01783	JP MORGAN CHASE	PO0111074	CHASE PAYMENT	\$330.94
01-02131	LEXISNEXIS	PO0110704	ONLINE SVCS 12/12	\$946.00
01-02307	ANNUITY TRANSFERS, LTD.	PO0110674	WC/ATTORNEY FEE	\$63.47
01-02307	ANNUITY TRANSFERS, LTD.	PO0110674	WC/ATTORNEY FEE	\$63.47
01-02307	ANNUITY TRANSFERS, LTD.	PO0110978	WC/ATTORNEY FEE	\$63.47
01-03022	CULLIGAN WATER CONDITION, INC.	PO0110993	BOTTLED WATER	\$9.00
01-03053	NORTHWEST SHREDDERS, LLC	PO0110735	SECURITY CONSOLE	\$40.00
01-03402	OMCCA	PO0111011	OMCCA TRAINING (3)	\$150.00
01-03701	TYLER TECHNOLOGIES, INC.	PO0110852	COURT CASE MANAGEMENT	\$1,772.90
01-03701	TYLER TECHNOLOGIES, INC.	PO0110933	COURT CASE MANAGEMENT	\$1,467.49
01-03898	WEST, RICKEY	PO0110868	WC/MILEAGE	\$405.86
01-03909	P3 MEDICAL SOLUTIONS, LLC	PO0111125	WC/MEDICAL	\$783.88
01-07045	GARFIELD CO. BAR ASSOC.	PO0110701	2013 DUES/S CAMPBELL	\$150.00
01-07045	GARFIELD CO. BAR ASSOC.	PO0110906	ANNUAL DUES 2013 (3)	\$300.00
01-13089	MERRIFIELD OFFICE SUPPLY	PO0110894	COMPUTER DESK/FILE DRAWER	\$1,690.00
01-15029	OK BAR ASSOC	PO0110836	ANNUAL DUES/S CAMPBELL	\$275.00
01-19063	SECRETARY OF STATE/NOTARY	PO0111010	NOTARY FEE/C STEIN	\$25.00
01-33380	OPFER, DAVID	PO0110675	WC/MEDICAL	\$253.89
01-33380	OPFER, DAVID	PO0110834	WC/MEDICAL	\$253.89
01-33380	OPFER, DAVID	PO0110981	WC/MEDICAL	\$253.89
01-55120	QUILL CORPORATION, INC.	PO0110773	CALENDARS	\$14.36
LEGAL SVCS. TOTAL				\$9,312.51

FUND 10 DEPT 140 - SAFETY

01-02853	HEALTHY ALTERNATIVES	PO0110976	HAND SANITIZER/WALL DISPENSER	\$314.97
01-03890	BOARD OF CERTIFIED SAFETY PROFESSIONA	PO0110734	2013 STS RENEWAL FEE/B MCBRIDE	\$60.00
01-16145	PETTY CASH	PO0111041	REIMB/MEAL/B MCBRIDE	\$29.48
SAFETY TOTAL				\$404.45

FUND 10 DEPT 200 - GENERAL GOV'T.

01-01783	JP MORGAN CHASE	PO0111074	CHASE PAYMENT	\$823.43
01-02790	GLOBAL SPECTRUM	PO0110924	LEADERSHIP EXCHANGE	\$3,244.26
01-03309	JACQUE BRAWNER DEAN LAW, PLLC	PO0110733	PROFESSIONAL LEGAL SERVICES	\$331.95
01-03707	DOERNER, SAUNDERS, DANIEL & ANDERS	PO0110996	PROFESSIONAL LEGAL SERVICES	\$2,062.50
01-03906	WILSON, JEREMY	PO0111028	REIMB/UNIFORM CHARGES	\$100.00
01-05134	ENID NEWS & EAGLE	PO0111025	PUBLICATIONS	\$519.00
01-05145	ENID METRO AR HM SER COMM	PO0106675	2012-2013 PROGRAM FUNDING	\$2,184.00
01-16145	PETTY CASH	PO0111040	REIMB/FILING FEES	\$40.00
01-16147	PEGASYS	PO0106565	2012-13 PROGRAM FUNDING	\$15,416.66
01-36830	MAIN STREET ENID, INC.	PO0106567	2012-13 PROGRAM FUNDING	\$6,250.00
01-41900	GARFIELD CO. ELECTION BOARD	PO0111088	PRE ELECTION EXPENSES	\$6,608.41

01-58150	MCAFFEE & TAFT	PO0110995	PROFESSIONAL LEGAL SERVICES	\$12,407.90
			GENERAL GOV'T. TOTAL	\$49,988.11

FUND 10 DEPT 210 - ACCOUNTING

01-00085	PITNEY BOWES	PO0110812	POSTAGE METER RENTAL 1/13	\$240.00
01-01472	STAPLES ADVANTAGE	PO0110991	CALCULATOR	\$56.99
01-01783	JP MORGAN CHASE	PO0111074	CHASE PAYMENT	\$316.55
01-02472	COTTRELL, RONALD CPA	PO0110925	PROFESSIONAL SERVICES	\$450.00
01-03053	NORTHWEST SHREDDERS, LLC	PO0110735	SECURITY CONSOLE	\$40.00
01-15007	OK MUNICIPAL LEAGUE, INC.	PO0110909	BUDGET MTG (8)	\$630.00
01-55120	QUILL CORPORATION, INC.	PO0110773	INK CARTRIDGE/CALENDARS	\$138.83
01-55120	QUILL CORPORATION, INC.	PO0110776	PLANNER/ENVELOPES/TAX FORMS	\$326.80
			ACCOUNTING TOTAL	\$2,199.17

FUND 10 DEPT 220 - RECORDS & RECEIPTS

01-03022	CULLIGAN WATER CONDITION, INC.	PO0110993	BOTTLED WATER	\$9.00
01-15007	OK MUNICIPAL LEAGUE, INC.	PO0110909	BUDGET MTG (1)	\$85.00
01-16145	PETTY CASH	PO0111040	REIMB/DRAWER SHORTAGE	\$4.71
01-55120	QUILL CORPORATION, INC.	PO0110773	CALENDARS	\$39.57
			RECORDS & RECEIPTS TOTAL	\$138.28

FUND 10 DEPT 240 - WAREHOUSE

01-01783	JP MORGAN CHASE	PO0111074	CHASE PAYMENT	\$676.90
01-18019	RAM PRODUCTS, INC.	PO0111112	PAINT MARKER	\$38.34
01-20106	T & W TIRE, INC.	PO0110710	V146 FLAT REPAIR	\$82.50
			WAREHOUSE TOTAL	\$797.74

FUND 10 DEPT 250 - INFORMATION TECHNOLOGY

01-01783	JP MORGAN CHASE	PO0111074	CHASE PAYMENT	\$568.08
01-02999	VISION INTERNET PROVIDERS, INC.	PO0110693	WEBSITE MAINT/CHANGE LOGO	\$810.00
01-02999	VISION INTERNET PROVIDERS, INC.	PO0110813	GRAPHIC DESIGN SRVS	\$197.15
01-03163	SUDDENLINK-COE	PO0107172	INTERNET SERVICE 2/13	\$2,925.00
01-55120	QUILL CORPORATION, INC.	PO0110773	CALENDARS	\$13.49
01-80170	TLIC WORLDWIDE, INC.	PO0110843	BASIC SUPPORT/SUBSCRIPTION	\$2,020.30
01-80310	SOFTWARE HOUSE INTERNATIONAL, INC.	PO0110915	EMAIL ARCHIVE SYSTEM	\$4,660.00
			INFORMATION TECHNOLOGY TOTAL	\$11,194.02

FUND 10 DEPT 300 - COMMUNITY DEVELOPEMENT

01-01783	JP MORGAN CHASE	PO0111074	CHASE PAYMENT	\$69.43
			COMMUNITY DEVELOPEMENT TOTAL	\$69.43

FUND 10 DEPT 350 - CODE ENFORCEMENT

01-02639	RON'S MOWING SERVICE	PO0110740	MOW/808 S INDEPENDENCE	\$75.00
01-02639	RON'S MOWING SERVICE	PO0110845	LIMB REMOVAL/2411 E OAK	\$1,000.00
01-02639	RON'S MOWING SERVICE	PO0110989	MOW/601 E BROADWAY	\$49.00
01-03589	T & J DEMOLITION, LLC	PO0110792	SECURED WINDOWS/214 S TYLER	\$320.00
01-16145	PETTY CASH	PO0111030	REIMB/MEAL/MAPC	\$65.00
01-16145	PETTY CASH	PO0111033	REIMB/FILING FEES	\$39.00
01-16145	PETTY CASH	PO0111033	REIMB/FILING FEES	\$226.00
01-16145	PETTY CASH	PO0111033	REIMB/MEAL/MAPC	\$79.98
01-16145	PETTY CASH	PO0111033	REIMB/CAR WASH	\$5.00
01-16145	PETTY CASH	PO0111033	REIMB/FILING FEES	\$19.00
01-16145	PETTY CASH	PO0111044	REIMB/FILING FEES	\$91.00
01-55120	QUILL CORPORATION, INC.	PO0110773	CALENDARS	\$117.81
01-80177	ALVARADO'S QUALITY MOWING	PO0110684	MOW/508 S PIERCE	\$59.00

01-80177	ALVARADO'S QUALITY MOWING	PO0110705	MOW/202 E YORK	\$59.00
			CODE ENFORCEMENT TOTAL	\$2,204.79

FUND 10 DEPT 400 - ENGINEERING

01-00150	IMPROVED CONSTRUCTION METHODS, INC	PO0110962	WOOD/LATH/HUBS	\$125.50
01-00703	APWA REGISTRATION	PO0111078	MEMBERSHIP RENEWAL (4)	\$568.00
01-01783	JP MORGAN CHASE	PO0111074	CHASE PAYMENT	\$923.14
01-02999	VISION INTERNET PROVIDERS, INC.	PO0109513	E-PROCUREMENT CUSTOMIZATIONS	\$360.45
01-05017	ENID TYPEWRITER CO., INC.	PO0111047	PRINTER MAINTENANCE 1/13-4/13	\$195.00
01-06067	FEDERAL EXPRESS CORP.	PO0110736	SHIPPING FEES	\$36.66
01-16145	PETTY CASH	PO0111039	REIMB/CREAMER	\$9.51
01-16145	PETTY CASH	PO0111044	REIMB/CORK BOARD	\$25.00
01-20048	T-SHIRT STORE, INC.	PO0111109	LOGO SHIRT	\$22.33
01-48610	STITCHES AHEAD, INC.	PO0111007	LOGO JACKETS (2)	\$159.00
01-49880	DELL MARKETING, LP	PO0109316	KEYBOARDS (2)	\$71.98
01-49880	DELL MARKETING, LP	PO0110345	COMPUTERS (4)	\$2,978.30
01-50210	LOWE'S HOME CENTERS, INC.	PO0110961	TAPE MEASURE	\$29.94
01-55120	QUILL CORPORATION, INC.	PO0110773	CALENDARS	\$75.53
01-55120	QUILL CORPORATION, INC.	PO0110776	INK CARTRIDGES/CAD ROLL	\$467.06
01-67730	OK FLOODPLAIN MANAGEMENT ASSOC.	PO0110963	2013 OFMA REGISTRATION (2)	\$150.00
01-80310	SOFTWARE HOUSE INTERNATIONAL, INC.	PO0110342	IPAD	\$596.00
			ENGINEERING TOTAL	\$6,793.40

FUND 10 DEPT 700 - MANAGEMENT SVCS.

01-00703	APWA REGISTRATION	PO0111078	MEMBERSHIP RENEWAL (3)	\$426.00
01-01783	JP MORGAN CHASE	PO0111074	CHASE PAYMENT	\$1,286.79
01-16004	PDQ PRINTING	PO0110799	YEAR END/ANNUAL REPORTS	\$260.00
01-16004	PDQ PRINTING	PO0110799	YEAR END/ANNUAL REPORTS	\$525.00
01-16145	PETTY CASH	PO0111044	REIMB/MILEAGE/S DELANGEL	\$65.79
01-16145	PETTY CASH	PO0111045	REIMB/MILEAGE/G KENT	\$115.44
01-16145	PETTY CASH	PO0111045	REIMB/MILEAGE/J MCCLAIN	\$115.65
			MANAGEMENT SVCS. TOTAL	\$2,794.67

FUND 10 DEPT 710 - FLEET MANAGEMENT

01-00703	APWA REGISTRATION	PO0111078	MEMBERSHIP RENEWAL/K LETTEER	\$142.00
01-01783	JP MORGAN CHASE	PO0111074	CHASE PAYMENT	\$902.60
01-01908	DOUBLE CHECK COMPANY, INC.	PO0110790	FUEL PUMP/LABOR	\$1,155.15
01-03889	CENTURY MANUFACTURING CORPORATION	PO0110679	DIESEL FUEL TREATMENT	\$132.82
01-12098	LAWSON PRODUCTS, INC.	PO0110972	SCREWDRIVER/WIRE STRIPPER	\$96.40
01-16004	PDQ PRINTING	PO0110708	FORMS	\$70.00
01-16145	PETTY CASH	PO0111037	REIMB/TRAILER TAGS	\$125.00
01-16145	PETTY CASH	PO0111044	REIMB/LOST TITLES	\$36.00
01-20106	T & W TIRE, INC.	PO0110710	V617 TIRE	\$230.38
01-23044	WHITEAKER TOOL & SUPPLY	PO0110709	SOCKET/TOOL KIT	\$328.55
01-35300	UNIFIRST, INC.	PO0110711	SHOP TOWEL SERVICE 12/12	\$331.96
01-47420	OXFORD CLEANERS	PO0110706	STAIN REMOVAL	\$45.00
01-51190	JACK'S OUTDOOR POWER EQUIPMENT	PO0111126	DIESEL FUEL TREATMENT	\$3.20
01-80246	ATWOODS	PO0110807	COAT/C TOWNLEY	\$71.99
			FLEET MANAGEMENT TOTAL	\$3,671.05

FUND 10 DEPT 730 - PARK

01-00413	MEL NORTHEY CO.	PO0110796	STREET LIGHT GLOBES	\$437.00
01-00571	SOUTHERN TIRE MART	PO0111122	V939 TIRES	\$830.00
01-00878	BROWN'S SHOE FIT COMPANY	PO0110808	BOOTS/B HIGGINS	\$125.00
01-01102	ATHEY LUMBER CO., INC.	PO0110745	LUMBER	\$600.08
01-01102	ATHEY LUMBER CO., INC.	PO0110892	LUMBER/SCREWS	\$856.99
01-01458	INTERSTATE BATTERY SYSTEM OF SW OK	PO0110971	V603 BATTERY	\$98.75
01-01710	CIMARRON METALS, INC.	PO0110748	SCRAP METAL	\$165.60
01-01783	JP MORGAN CHASE	PO0111074	CHASE PAYMENT	\$3,307.83
01-01943	JOHNSTON SEED COMPANY, INC.	PO0110742	RYEGRASS	\$770.00

01-01972	TESSCO	PO0110741	POWER SUPPLY/ANTENNA	\$685.00
01-02515	ENID EYE OPTICAL, INC.	PO0110938	GLASSES/B MOODY	\$102.00
01-02534	DeFNIC SOFTWARE & CONSULTING	PO0111093	LICENSE/HOSTED SERVER	\$410.00
01-03000	CARTER PAINT CO.	PO0110793	PAINT REDUCER/PAINT	\$116.54
01-03107	CHEM-CAN SERVICES, INC.	PO0110739	PORTABLE TOILET RENTAL 1/13	\$231.60
01-05010	ENID IRON & METAL CO., INC.	PO0110749	SCRAP METAL	\$962.05
01-05012	ENID WINNELSON COMPANY, INC.	PO0110750	STEEL/PVC/ADAPTOR/VALVE	\$95.38
01-08018	HOTSY OF OKLAHOMA, INC.	PO0111067	SOAP	\$51.00
01-08022	HUGHES LUMBER CO., LLC	PO0110747	LUMBER/BLADES/BOLTS	\$79.20
01-08022	HUGHES LUMBER CO., LLC	PO0110896	NAIL BOX	\$6.69
01-12098	LAWSON PRODUCTS, INC.	PO0110794	NUTS/BOLTS/SCREWS	\$386.79
01-12098	LAWSON PRODUCTS, INC.	PO0110972	SCREWS/BOLTS/NUTS	\$196.88
01-12098	LAWSON PRODUCTS, INC.	PO0111068	NUTS/WASHERS/SCREWS/BLADES	\$1,197.64
01-16004	PDQ PRINTING	PO0110799	POSTERS	\$24.00
01-16156	PLANTS-A-PLENTY	PO0110751	FLOWERS	\$312.50
01-19004	SHERWIN-WILLIAMS CO., INC.	PO0110743	PAINT BRUSH	\$37.46
01-19004	SHERWIN-WILLIAMS CO., INC.	PO0110890	ROLLER TRAY/LINER	\$38.91
01-20048	T-SHIRT STORE, INC.	PO0110723	LOGO SHIRTS (18)	\$114.69
01-30830	LOCKE SUPPLY, INC.	PO0110893	BAR HANGER/CONNECTOR	\$22.12
01-51190	JACK'S OUTDOOR POWER EQUIPMENT	PO0111126	DIESEL FUEL TREATMENT	\$78.17
01-51190	JACK'S OUTDOOR POWER EQUIPMENT	PO0111127	LIFT GATES	\$1,079.94
01-58740	STUART C. IRBY	PO0110744	OUTLET BOX	\$3.37
01-80246	ATWOODS	PO0110934	COVERALLS/D SAGER	\$69.99
01-80473	ACE HARDWARE-SOUTHERN HARDLINES	PO0110746	BOLTS	\$11.94
01-80473	ACE HARDWARE-SOUTHERN HARDLINES	PO0110891	BULBS/PATCH	\$58.96
			PARK TOTAL	\$13,564.07

FUND 10 DEPT 740 - STREET & TRAFFIC CONTROL

01-00703	APWA REGISTRATION	PO0111078	MEMBERSHIP RENEWAL/J CRAWFORD	\$142.00
01-01783	JP MORGAN CHASE	PO0111074	CHASE PAYMENT	\$3,229.82
01-01972	TESSCO	PO0110717	2 WAY RADIO/ANTENNAS	\$520.75
01-02534	DeFNIC SOFTWARE & CONSULTING	PO0111093	LICENSE/HOSTED SERVER	\$410.00
01-02564	SENSATA TECHNOLOGIES MARYLAND, INC.	PO0110716	BATTERY REPAIR	\$225.00
01-03253	YELLOWHOUSE MACHINERY COMPANY	PO0110975	V161 FILTERS	\$387.89
01-04033	DOLESE BROTHERS CO., INC.	PO0110765	CONCRETE	\$1,827.58
01-04033	DOLESE BROTHERS CO., INC.	PO0110983	CONCRETE	\$413.75
01-04033	DOLESE BROTHERS CO., INC.	PO0110997	CONCRETE	\$1,194.38
01-06019	FLAMING AUTO SUPPLY CO., INC.	PO0110970	V103 HOSE	\$22.49
01-07030	GADES SALES CO., INC.	PO0111064	BACK PLATES	\$322.50
01-07036	GRAINGER, INC.	PO0111065	STREET LAMPS	\$565.66
01-13010	3M	PO0111069	SHEETING	\$1,044.00
01-13017	MUNN SUPPLY, INC.	PO0110988	SAFETY GLASSES	\$11.53
01-16104	PAVING MAINTENANCE SUPPLY	PO0110715	SAFETY VEST	\$300.00
01-16145	PETTY CASH	PO0111038	REIMB/CDL/D THORP	\$41.50
01-19004	SHERWIN-WILLIAMS CO., INC.	PO0110685	PAINT	\$134.95
01-20048	T-SHIRT STORE, INC.	PO0110723	LOGO JACKETS (12)	\$63.00
01-20106	T & W TIRE, INC.	PO0110781	V146 FLAT REPAIR	\$82.50
01-50210	LOWE'S HOME CENTERS, INC.	PO0110714	PVC	\$92.05
01-51190	JACK'S OUTDOOR POWER EQUIPMENT	PO0111126	DIESEL FUEL TREATMENT	\$110.86
01-58740	STUART C. IRBY	PO0110802	BLADE CASSETTE	\$144.22
01-58740	STUART C. IRBY	PO0110987	SWITCH/CLAMP/FUSE	\$269.64
			STREET & TRAFFIC CONTROL TOTAL	\$11,556.07

FUND 10 DEPT 750 - MAINTENANCE & TECH SERVICES

01-00878	BROWN'S SHOE FIT COMPANY	PO0111101	BOOTS/J RIVERA	\$162.00
01-01008	CED FT WORTH CREDIT	PO0111102	WALLPLATE	\$18.55
01-01783	JP MORGAN CHASE	PO0111074	CHASE PAYMENT	\$3,169.00
01-08022	HUGHES LUMBER CO., LLC	PO0110782	SCREWS/BLADE/BITS	\$33.77
01-13017	MUNN SUPPLY, INC.	PO0110897	OXYGEN	\$20.33
01-51190	JACK'S OUTDOOR POWER EQUIPMENT	PO0111126	DIESEL FUEL TREATMENT	\$2.92
01-80312	DAN CORNFORTH LOCK & SAFE	PO0110783	KEYS	\$16.00
			MAINTENANCE & TECH SERVICES TOTAL	\$3,422.57

FUND 10 DEPT 900 - LIBRARY

01-01783	JP MORGAN CHASE	PO0111074	CHASE PAYMENT	\$4,692.22
01-02367	WT COX SUBSCRIPTIONS	PO0110853	SUBSCRIPTION MGMT 1/13	\$6,802.50
01-03891	GOMEZ, ANABEL R	PO0110702	LOST BOOK FEE	\$13.99
01-03893	7 HAWKS PUBLISHING COMPANY	PO0110778	BOOKS (4)	\$59.80
01-21044	UNITED SUPERMARKET	PO0110703	TEEN PROGRAM MATERIAL	\$8.64
LIBRARY TOTAL				\$11,577.15

FUND 10 DEPT 950 - SALES TAX TRANS.

01-03060	CENTRAL NATIONAL BANK	PO0110959	EMA SALES TAX TRANSFER 1/13	\$67,732.73
01-19099	SECURITY NATIONAL BANK	PO0110960	SCHOOL SALES TAX TRANSFER 1/13	\$17,919.92
SALES TAX TRANS. TOTAL				\$85,652.65

FUND 10 DEPT 955 - CAPITAL ASSETS & PROJECTS

01-01972	TESSCO	PO0110138	IT-1301 SECTOR ANTENNAS	\$1,447.30
01-03068	HOMETOWN TRAILER SALES	PO0110241	UTILITY TRAILERS (3)	\$11,250.00
01-03370	KRONOS INCORPORATED	PO0111104	SOFTWARE SUPPORT	\$11,001.26
01-03370	KRONOS INCORPORATED	PO0111105	PROFESSIONAL SERVICES	\$8,814.25
01-03521	TRIBRIDGE HOLDINGS, LLC	PO0110803	GP INTEGRATIONS	\$2,507.50
01-03521	TRIBRIDGE HOLDINGS, LLC	PO0110804	GP INTEGRATIONS	\$2,722.50
01-03521	TRIBRIDGE HOLDINGS, LLC	PO0111091	GP INTEGRATIONS	\$3,052.50
CAPITAL ASSETS & PROJECTS TOTAL				\$40,795.31

FUND 12 DEPT 125 - SPECIAL PROJECT

01-55470	OK STATE BUREAU INVESTIGATION	PO0111094	REIMB/CELLBRIGHT SOFTWARE	\$2,498.99
SPECIAL PROJECT TOTAL				\$2,498.99

FUND 14 DEPT 145 - HEALTH FUND

01-01783	JP MORGAN CHASE	PO0111074	CHASE PAYMENT	\$844.95
01-01869	DEARBORN LIFE INSURANCE CO.	PO0110760	LIFE INS PREMIUMS 12/12	\$2,346.68
01-02166	FINER PHYSIQUES, INC.	PO0110939	WELLNESS DOLLARS	\$100.00
01-70870	FOCUS INSTITUTE, INC.	PO0110785	EAP MONTHLY SERVICE 1/13	\$1,233.33
HEALTH FUND TOTAL				\$4,524.96

FUND 20 DEPT 205 - AIRPORT

01-00158	C-P INTEGRATED SERVICES INC.	PO0107303	AIP0252012 DRAINAGE IMPROVEMENT	\$39,169.26
01-01783	JP MORGAN CHASE	PO0111074	CHASE PAYMENT	\$539.56
01-02269	COBB ENGINEERING CO.	PO0107486	A-1301A RUNWAY EXTENSION	\$9,945.00
01-02269	COBB ENGINEERING CO.	PO0101605	AIP0252012 DRAINAGE IMPROVEMENT	\$1,300.00
01-02269	COBB ENGINEERING CO.	PO0107486	A-1301A RUNWAY EXTENSION	\$10,940.00
01-02269	COBB ENGINEERING CO.	PO0107604	AIP0252012 DRAINAGE IMPROVEMENT	\$8,900.00
01-02364	NORTHWEST OK FIRE & SEC.	PO0110931	FIRE PANEL/BATTERY REPLACEMENT	\$1,945.18
01-02712	FARMER BROS. CO.	PO0110905	COFFEE PODS	\$78.34
01-03122	CROWN PRODUCTS, INC.	PO0110696	FUEL/PLACARDS/SEAL	\$619.45
01-03210	THE JOURNAL RECORD	PO0111027	PUBLICATIONS/RFP	\$50.69
01-03244	AC-U-KWIK	PO0111008	AIRPORT DIRECTORIES	\$408.10
01-03662	MXP ENID, LLC	PO0110858	GASOLINE	\$1,242.86
01-13017	MUNN SUPPLY, INC.	PO0110897	HOSE/COUPLER	\$64.03
01-23076	WING AERO PRODUCTS, INC.	PO0110691	SECTIONALS/CHARTS	\$474.55
01-23076	WING AERO PRODUCTS, INC.	PO0110695	SECTIONALS	\$75.08
01-34860	J. A. BENGE CO.	PO0110854	FURNACE REPAIR	\$80.00
01-35300	UNIFIRST, INC.	PO0110681	AIR FRESHENER/MOP	\$107.85
01-55120	QUILL CORPORATION, INC.	PO0111073	TONER	\$614.30

01-64080	AIRGAS	PO0110904	OUTLET	\$3.71
01-80203	CARRIER OKLAHOMA	PO0110697	INDUCER KIT	\$353.12
01-80246	ATWOODS	PO0110738	JEANS/G BECKER	\$56.96
01-80246	ATWOODS	PO0110738	COAT/G BECKER	\$67.99
01-80343	FENTRESS OIL COMPANY, INC.	PO0110759	OIL/ST	\$136.43
			AIRPORT TOTAL	\$77,172.46

FUND 22 DEPT 225 - GOLF

01-00272	JUSTICE GOLF CAR CO., INC.	PO0110686	BATTERY/STRAP/SWITCH	\$822.40
01-00272	JUSTICE GOLF CAR CO., INC.	PO0110847	GOLF CART	\$4,350.00
01-00272	JUSTICE GOLF CAR CO., INC.	PO0106619	GOLF CAR LEASE 1/13	\$1,560.00
01-01338	J & P SUPPLY, INC.	PO0110690	AIR FRESHENER	\$17.00
01-01783	JP MORGAN CHASE	PO0111074	CHASE PAYMENT	\$784.16
01-02243	BB MACHINE & SUPPLY, INC.	PO0111022	HOSE	\$30.44
01-02446	JOHN DEERE FINANCIAL	PO0106737	GATOR LEASE 1/13	\$323.28
01-03662	MXP ENID, LLC	PO0111017	GASOLINE	\$823.83
01-12041	LUBER BROS., INC.	PO0110688	BEARING	\$43.44
01-13017	MUNN SUPPLY, INC.	PO0111019	CYLINDER	\$7.14
01-15132	O'REILLY AUTO PARTS, INC.	PO0110689	BATTERIES	\$126.64
01-15132	O'REILLY AUTO PARTS, INC.	PO0111015	POLISHER GEL	\$167.76
01-20048	T-SHIRT STORE, INC.	PO0110683	LOGO JACKETS (2)	\$95.66
01-31350	ADVANCED FIRE EQUIPMENT	PO0111016	F/E ANNUAL SERVICE 1/13	\$248.00
01-38030	DAL SECURITY, INC.	PO0110810	CAMERA INSTALLATION	\$1,475.90
01-51190	JACK'S OUTDOOR POWER EQUIPMENT	PO0110687	BAR/SPROCKET	\$62.60
01-51190	JACK'S OUTDOOR POWER EQUIPMENT	PO0111020	CHAINSAW COVER	\$38.92
01-65460	ACTSHON PEST CONTROL	PO0110682	EXTERMINATING SERVICE 1/13	\$75.00
01-73330	IROQUOIS PRODUCTS, INC.	PO0111021	OIL WIPES	\$162.45
			GOLF TOTAL	\$11,214.62

FUND 30 DEPT 305 - ST. & ALLEY

01-03863	YOUNG CONTRACTING, LLC	PO0109946	R-1205A RENAISSANCE STREET IMP	\$49,744.28
			ST. & ALLEY TOTAL	\$49,744.28

FUND 31 DEPT 000 - N.A.

01-01373	OKLAHOMA WATER RESOURCES BOARD	PO0110926	SEMI ANNUAL PRINCIPAL FEES	\$27,692.31
01-01373	OKLAHOMA WATER RESOURCES BOARD	PO0110927	SEMI ANNUAL PRINCIPAL FEES	\$47,650.00
01-01373	OKLAHOMA WATER RESOURCES BOARD	PO0110928	SEMI ANNUAL PRINCIPAL FEES	\$29,601.04
			N.A. TOTAL	\$104,943.35

FUND 31 DEPT 230 - UTILITY BILLING

01-00703	APWA REGISTRATION	PO0111078	MEMBERSHIP RENEWAL/R OSMUS	\$142.00
01-00793	OKLAHOMA OFFICE SYSTEMS, INC.	PO0110937	PRINTER MAINTENANCE 1/13	\$217.87
01-01333	ENID CLINIC, INC.	PO0110912	WC/MEDICAL	\$85.50
01-01783	JP MORGAN CHASE	PO0111074	CHASE PAYMENT	\$297.13
01-20048	T-SHIRT STORE, INC.	PO0110984	LOGO SHIRTS (8)	\$248.24
01-31350	ADVANCED FIRE EQUIPMENT	PO0110910	F/E ANNUAL SERVICE 1/13	\$20.00
01-55120	QUILL CORPORATION, INC.	PO0110773	CALENDARS	\$78.24
01-80246	ATWOODS	PO0110738	JEANS/J MORRISON	\$39.96
			UTILITY BILLING TOTAL	\$1,128.94

FUND 31 DEPT 315 - E.M.A.

01-01373	OKLAHOMA WATER RESOURCES BOARD	PO0110926	SEMI ANNUAL PRINCIPAL FEES	\$1,335.88
01-01373	OKLAHOMA WATER RESOURCES BOARD	PO0110927	SEMI ANNUAL PRINCIPAL FEES	\$1,446.09
01-01373	OKLAHOMA WATER RESOURCES BOARD	PO0110928	SEMI ANNUAL PRINCIPAL FEES	\$1,200.92
01-02891	BANK OF OKLAHOMA, N.A.	PO0110994	2012 NOTE INT FUND	\$750.00

E.M.A. TOTAL

\$4,732.89

FUND 31 DEPT 760 - SOLID WASTE

01-00146	CINTAS CORPORATION LOC. 624	PO0110900	SHOP TOWEL SERVICE 1/13	\$109.96
01-00703	APWA REGISTRATION	PO0111078	MEMBERSHIP RENEWAL/T WALLS	\$142.00
01-00838	ROBERTS TRUCK CENTER, INC.	PO0110791	V214 INJECTOR/CABLE/LABOR	\$1,236.72
01-01472	STAPLES ADVANTAGE	PO0110991	WRIST REST/FILE POCKETS	\$40.44
01-01783	JP MORGAN CHASE	PO0111074	CHASE PAYMENT	\$4,688.66
01-02534	DeFNIC SOFTWARE & CONSULTING	PO0111093	LICENSE/HOSTED SERVER	\$410.00
01-03312	CAROLINA SOFTWARE, INC.	PO0110901	SOFTWARE MAINTENANCE 1/13	\$900.00
01-03389	HOL-MAC CORPORATION	PO0111128	V244 TIP BOOM CYLINDER	\$2,466.63
01-08058	HOLTZ INDUSTRIES, INC.	PO0110707	V236 CYLINDER	\$577.50
01-03880	STEPHENS, ELDON	PO0110673	WC/MEDICAL TTD	\$572.65
01-03880	STEPHENS, ELDON	PO0110829	WC/MEDICAL TTD	\$572.65
01-03880	STEPHENS, ELDON	PO0110982	WC/MEDICAL TTD	\$572.65
01-12098	LAWSON PRODUCTS, INC.	PO0110972	CONNECTORS	\$143.40
01-12098	LAWSON PRODUCTS, INC.	PO0111068	FITTINGS/SCREWS/CAPS/FUSES	\$1,010.82
01-13089	MERRIFIELD OFFICE SUPPLY	PO0110895	CALENDAR/WIPES	\$42.96
01-15125	OK GAS & ELECTRIC	PO0110899	MONTHLY SERVICE 12/12	\$117.67
01-16145	PETTY CASH	PO0111046	REIMB/MILEAGE/T WALLS	\$99.78
01-20048	T-SHIRT STORE, INC.	PO0110898	COE LOGO PATCHES (62)	\$248.00
01-20106	T & W TIRE, INC.	PO0111072	V224 TIRES	\$1,200.54
01-23013	WAKO, INC.	PO0110902	FITTINGS/PLUG	\$11.76
01-51190	JACK'S OUTDOOR POWER EQUIPMENT	PO0111126	DIESEL FUEL TREATMENT	\$563.12
01-56300	TRUCK PRO, INC.	PO0111071	V216 GOVENOR	\$36.98
01-61010	B-K PROPANE, INC.	PO0110930	PROPANE	\$1,791.25
01-80246	ATWOODS	PO0110869	INSULATOR/CLAMP/ROD	\$61.73
01-80246	ATWOODS	PO0110944	COAT/E HARRINGTON	\$49.99
01-80246	ATWOODS	PO0110944	BOOTS/E HARRINGTON	\$99.99
01-80246	ATWOODS	PO0110944	JEANS/E HARRINGTON	\$60.00
01-80310	SOFTWARE HOUSE INTERNATIONAL, INC.	PO0110227	IPADS (5)	\$2,980.00
01-80343	FENTRESS OIL COMPANY, INC.	PO0110798	HYDRAULIC OIL	\$1,205.43
01-80343	FENTRESS OIL COMPANY, INC.	PO0111063	OIL	\$750.67
SOLID WASTE TOTAL				\$22,763.95

FUND 31 DEPT 790 - WATER DEPARTMENT

01-00703	APWA REGISTRATION	PO0111078	MEMBERSHIP RENEWAL/B BOYD	\$142.00
01-01178	ACCURATE, INC.	PO0110820	SAMPLE ANALYSIS 1/13	\$535.00
01-01178	ACCURATE, INC.	PO0111002	SAMPLE ANALYSIS 1/13	\$703.00
01-01453	WESTERN HYDRO CORP.	PO0110712	WATER PUMP/MOTOR	\$1,722.54
01-01783	JP MORGAN CHASE	PO0111074	CHASE PAYMENT	\$1,594.14
01-02534	DeFNIC SOFTWARE & CONSULTING	PO0111093	LICENSE/HOSTED SERVER	\$410.00
01-02629	SHANNAHAN, INC.	PO0110780	HOIST MAINTENANCE 12/12	\$950.00
01-05084	EVANS ENTERPRISES	PO0109986	ELECTRIC MOTOR	\$4,960.00
01-13017	MUNN SUPPLY, INC.	PO0110819	CYLINDER	\$7.13
01-15083	OK CONTRACTORS SUPPLY	PO0110974	CHECK VALVES/FLANGES	\$380.00
01-15083	OK CONTRACTORS SUPPLY	PO0110634	METER DOUBLE CHECK VALVES (15)	\$5,400.00
01-16010	PIONEER TELEPHONE CO., INC.	PO0110822	MONTHLY SERVICE 1/13	\$171.32
01-16010	PIONEER TELEPHONE CO., INC.	PO0111003	MONTHLY SERVICE 1/13	\$78.83
01-19047	AT & T	PO0110779	MONTHLY SERVICE 1/13	\$146.71
01-51190	JACK'S OUTDOOR POWER EQUIPMENT	PO0111126	DIESEL FUEL TREATMENT	\$11.00
01-58740	STUART C. IRBY	PO0110821	CONNECTOR	\$125.76
01-61010	B-K PROPANE, INC.	PO0111005	PROPANE	\$264.17
01-80258	BRENNTAG SOUTHWEST, INC.	PO0107304	CHLORINE	\$1,541.20
01-80473	ACE HARDWARE-SOUTHERN HARDLINES	PO0111004	WASTEBASKET	\$70.93
WATER DEPARTMENT TOTAL				\$19,213.73

FUND 31 DEPT 795 - WASTE WATER MANAGEMENT SERVICES

01-00146	CINTAS CORPORATION LOC. 624	PO0110950	SHOP TOWEL SERVICE 1/13	\$534.78
01-01017	ALBRIGHT STEEL & WIRE COMPANY	PO0107857	FENCING (600 FT)	\$2,930.93
01-01338	J & P SUPPLY, INC.	PO0110727	PAPER TOWELS/LINERS	\$210.92
01-01476	NORTHERN SAFETY CO., INC.	PO0110724	GLOVES (144)	\$224.94

01-01783	JP MORGAN CHASE	PO0111074	CHASE PAYMENT	\$4,997.45
01-02017	A. W. BRUEGGEMANN CO., INC.	PO0110726	PUNCH MACHINE REPLACEMENT	\$65.66
01-02243	BB MACHINE & SUPPLY, INC.	PO0110769	HOSE/COUPLER	\$51.19
01-02534	DeFNIC SOFTWARE & CONSULTING	PO0111093	LICENSE/HOSTED SERVER	\$820.00
01-03000	CARTER PAINT CO.	PO0111058	V361 PAINT/ACTIVATOR	\$220.97
01-03107	CHEM-CAN SERVICES, INC.	PO0111000	PUMP PIT	\$1,650.00
01-03253	YELLOWHOUSE MACHINERY COMPANY	PO0110766	V345 LATCH/WASHER/NUT	\$318.42
01-03389	HOL-MAC CORPORATION	PO0110949	GRAPPLE PINS	\$214.96
01-03512	PACE ANALYTICAL SERVICES, INC.	PO0110725	OIL/GREASE	\$46.75
01-03662	MXP ENID, LLC	PO0110955	DIESEL	\$39.34
01-03902	MCGIVERN & GILLIARD A PROFESSIONAL	PO0110956	WC/PROFESSIONAL SERVICES	\$40.00
01-04033	DOLESE BROTHERS CO., INC.	PO0110765	CRUSHER RUN	\$744.74
01-04033	DOLESE BROTHERS CO., INC.	PO0110846	CRUSHER RUN	\$1,440.75
01-04033	DOLESE BROTHERS CO., INC.	PO0110951	CRUSHER RUN	\$176.40
01-04038	OK DEPT OF ENVIRONMENTAL QUAL	PO0110678	CONSENT ORDER FINE	\$5,450.00
01-05006	ENID ELECTRIC MOTOR	PO0111006	BEARING/GREASE/LABOR	\$1,529.07
01-05010	ENID IRON & METAL CO., INC.	PO0110728	SCRAP METAL	\$87.30
01-07036	GRAINGER, INC.	PO0110719	ELECTRIC HEATER	\$807.75
01-07036	GRAINGER, INC.	PO0110788	ELECTRIC HEATER/CIRCULATOR	\$2,168.56
01-12098	LAWSON PRODUCTS, INC.	PO0111068	SCREWS	\$97.90
01-13017	MUNN SUPPLY, INC.	PO0110952	CYLINDER	\$7.13
01-13089	MERRIFIELD OFFICE SUPPLY	PO0110763	BOARD/MARKER/PENS	\$103.12
01-14118	NCL OF WISCONSIN	PO0110720	SAMPLE ANALYSIS 12/12	\$689.93
01-15083	OK CONTRACTORS SUPPLY	PO0110797	TAPPING MACHINE PARTS	\$1,110.00
01-15083	OK CONTRACTORS SUPPLY	PO0110974	FULL CIRCLE CLAMPS/VALVES	\$1,300.00
01-15132	O'REILLY AUTO PARTS, INC.	PO0110774	VENT DIFFUSER/PAPER/OILWICK	\$33.63
01-15132	O'REILLY AUTO PARTS, INC.	PO0110945	V343 TOOL BOX	\$10.99
01-16104	PAVING MAINTENANCE SUPPLY	PO0110943	COAT/D ALBERTS	\$57.00
01-16145	PETTY CASH	PO0111031	REIMB/MEAL/B HENRY	\$46.56
01-16145	PETTY CASH	PO0111031	REIMB/PROTECTOR/B LECKIE	\$19.88
01-16145	PETTY CASH	PO0111031	REIMB/TOLL/B HENRY	\$13.79
01-16145	PETTY CASH	PO0111046	REIMB/MILEAGE/B HENRY	\$141.96
01-16145	PETTY CASH	PO0111046	REIMB/MILEAGE/J CAMPBELL	\$134.65
01-16145	PETTY CASH	PO0111046	REIMB/MILEAGE/C MOCHON	\$134.65
01-16145	PETTY CASH	PO0111046	REIMB/BOOTS/M WILLIAMS	\$125.00
01-18116	RAMSEY'S WHAT EVER STORE	PO0110730	CABLE	\$5.90
01-18116	RAMSEY'S WHAT EVER STORE	PO0110771	V343 NAIL BOX	\$4.99
01-19004	SHERWIN-WILLIAMS CO., INC.	PO0110775	PAINT/TAPE/TRAY	\$270.28
01-20048	T-SHIRT STORE, INC.	PO0110723	LOGO SHIRTS (5)	\$212.45
01-30830	LOCKE SUPPLY, INC.	PO0110953	FILTERS (25)	\$120.33
01-38030	DAL SECURITY, INC.	PO0110718	MONTHLY MONITORING 12/12	\$98.00
01-50210	LOWE'S HOME CENTERS, INC.	PO0110731	CHAIN/FITTINGS/CONNECTOR	\$40.74
01-50210	LOWE'S HOME CENTERS, INC.	PO0110777	SHELVING UNIT	\$261.09
01-50210	LOWE'S HOME CENTERS, INC.	PO0110946	SHELVING UNIT/BROOM/LOCK	\$181.82
01-51190	JACK'S OUTDOOR POWER EQUIPMENT	PO0111126	DIESEL FUEL TREATMENT	\$53.81
01-58740	STUART C. IRBY	PO0110761	COPPER WIRE/SCREWS/STEEL	\$332.55
01-58740	STUART C. IRBY	PO0110761	COPPER WIRE/SCREWS/STEEL	\$56.58
01-58740	STUART C. IRBY	PO0110948	COVER BOX/VINYL	\$62.79
01-59250	USA BLUEBOOK	PO0110954	CLEANING COMPOUND	\$443.50
01-65460	ACTSHON PEST CONTROL	PO0110770	PEST CONTROL 1/13	\$120.00
01-80020	GARFIELD COUNTY HEALTH DEPT.	PO0110942	HEP B VACCINES	\$103.00
01-80246	ATWOODS	PO0110738	CHAIN/STRAPS/HOOK	\$98.71
01-80246	ATWOODS	PO0110805	BOOTS/B HENRY	\$125.00
01-80246	ATWOODS	PO0110869	COVERALLS/T KEGIN	\$83.98
01-80246	ATWOODS	PO0110958	JEANS/J CAMPBELL	\$60.00
01-80312	DAN CORNFORTH LOCK & SAFE	PO0110729	KEYS	\$7.00
01-80473	ACE HARDWARE-SOUTHERN HARDLINES	PO0110767	COMPACT DRILL/CADDY/FLASHLIGHT	\$160.94
01-80473	ACE HARDWARE-SOUTHERN HARDLINES	PO0110947	GLUE/MOUSE TRAP/TAPE	\$20.96
			WASTE WATER MANAGEMENT SERVICE!	\$31,721.49

FUND 31 DEPT 956 - EMA EQUIP REPLACEMENT

01-58431	CDW GOVERNMENT, INC.	PO0110754	IPADS (40)	\$23,694.80
			EMA EQUIP REPLACEMENT TOTAL	\$23,694.80

FUND 32 DEPT 325 - E.E.D.A.

01-01406	GUARANTEE ABSTRACT CO	PO0110824	PROPERTY PURCHASE/523 S INDEP	\$143,151.00
01-02687	RETAIL ATTRACTIONS, LLC	PO0106561	ECONOMIC DEVELOPMENT SERVICES	\$5,500.00
01-02845	ENID REGIONAL DEVELOPMENT ALLIANCE	PO0110859	ECONOMIC DEVELOPMENT SERVICES	\$300,000.00
01-02891	BANK OF OKLAHOMA, N.A.	PO0111090	2013 ESCROW FEES	\$500.00
01-03132	CDSA	PO0110921	2012 ROOSEVELT SCHOOL TIF PYMT	\$10,366.69
01-03585	ROOSEVELT PARK APARTMENTS	PO0110922	2012 ROOSEVELT SCHOOL TIF PYMT	\$24,978.31
01-03602	UNITED STATES BEEF CORP	PO0110671	HOMELAND PARKING RENT/JAN-FEB	\$7,000.00
01-46000	TRAYNOR. LONG & WYNNE, PC	PO0110825	CARTER/CREASEY FINAL PAYMENT	\$6,773.32
			E.E.D.A. TOTAL	\$498,269.32

FUND 33 DEPT 335 - V.D.A.

01-00223	COOPER, MICHAEL G.	PO0111095	DEFENSE/TRANSPORTATION MEETING	\$1,439.23
01-00223	COOPER, MICHAEL G.	PO0091831	CONSULTING SERVICES	\$10,000.00
01-00223	COOPER, MICHAEL G.	PO0111117	PHONE REIMB 10/12-12/12	\$391.42
01-00332	TRAVEL ENTERPRISE, INC.	PO0111118	REIMB/AIRFARE/M COOPER	\$488.60
01-03894	RAY, JESSICA L	PO0110809	TEXTBOOK REIMBURSEMENT	\$200.00
01-03895	DILLION, JESSICA L	PO0110811	TEXTBOOK REIMBURSEMENT	\$100.00
01-03908	JOHNSON, BRITTANY M.	PO0111084	TEXTBOOK REIMBURSEMENT	\$100.00
			V.D.A. TOTAL	\$12,719.25

FUND 40 DEPT 405 - CAP. IMPROVEMENT

01-00894	POE & ASSOCIATES, INC.	PO0102706	R-1108B BOGGY CREEK/42ND STR	\$8,874.00
01-01725	HOWELL & VANCUREN	PO0104074	P-1206A PARKS MASTER PLAN	\$4,810.35
01-02482	TETRA TECH, INC.	PO0092320	R-0814A GO BOND BRIDGE IMPROV	\$875.34
01-03205	HEMBREE & HODGSON CONSTRUCTION, LL	PO0105732	M-1212A BUILDING ADDITION	\$982.80
01-03334	CONTINENTAL CONSTRUCTION	PO0106340	M-1201B PHASE IV PED TRAIL	\$6,248.62
01-03334	CONTINENTAL CONSTRUCTION	PO0106146	M-1201A PEDESTRIAN TRAIL	\$28,346.57
01-03334	CONTINENTAL CONSTRUCTION	PO0105543	M-1001A MASTER TRAIL SYSTEM	\$46,393.22
01-03334	CONTINENTAL CONSTRUCTION	PO0102240	M-1001A TRAIL PROJECT CO 1	\$6,013.49
01-03334	CONTINENTAL CONSTRUCTION	PO0110830	M-1001A PEDESTRIAN TRAIL PROJECT	\$1,504.68
01-03755	SIGMA SOLUTIONS	PO0108137	M-1109J WIRELESS SERVICE	\$7,752.00
01-03901	DACE FARMS, LLC	PO0110977	R-1108D 42ND R/W ACQUISITION	\$1,167.50
01-05050	ENVIROTECH	PO0107598	M-1207A PROFESSIONAL SERVICES	\$12,049.75
01-05134	ENID NEWS & EAGLE	PO0111113	G-1002A PUBLICATIONS	\$308.73
01-08060	HENSON CONSTRUCTION CO., INC.	PO0108815	P-1205A CAROUSEL HOUSE	\$69,796.78
01-08060	HENSON CONSTRUCTION CO., INC.	PO0108218	M-1215A RENAISSANCE PARKING	\$173,894.74
01-15156	OK DEPT. OF TRANSPORTATION	PO0110979	R-0302A WILLOW/OAKWOOD ROAD	\$33,500.71
01-50210	LOWE'S HOME CENTERS, INC.	PO0110714	M-1109F PAINT/VANITY	\$330.82
01-50480	J J WESTHOFF CONSTRUCTION COMPANY	PO0109061	M-1207B CONSTRUCT CELLS	\$31,409.73
			CAP. IMPROVEMENT TOTAL	\$434,259.83

FUND 42 DEPT 425 - SANITARY SEWER FUND

01-02979	NOWAK CONSTRUCTION, INC.	PO0105308	W-1006A WATERLINE EXPANSION	\$34,325.60
01-12007	LUCKINBILL, INC.	PO0110855	S-0703E VENT PIPE EXTENSION	\$2,675.00
01-12007	LUCKINBILL, INC.	PO0099945	S-1101A SEWER POINT REPAIRS	\$20,729.48
			SANITARY SEWER FUND TOTAL	\$57,730.08

FUND 43 DEPT 435 - STORMWATER FUND

01-01783	JP MORGAN CHASE	PO0111074	CHASE PAYMENT	\$128.64
01-02736	BYRIN'S LAWN CARE	PO0110789	F-1305A TREE REMOVAL/DOWNTOWN	\$1,700.00
01-02736	BYRIN'S LAWN CARE	PO0110816	TREE REMOVAL 16TH/BROADWAY	\$150.00
01-02736	BYRIN'S LAWN CARE	PO0110816	TREE REMOVAL 5TH/MAINE	\$350.00
01-02736	BYRIN'S LAWN CARE	PO0111034	F-1305A TREE REMOVAL/INDEP	\$400.00
01-02736	BYRIN'S LAWN CARE	PO0111034	F-1305A TREE REMOVAL/WILLOW	\$500.00
01-02736	BYRIN'S LAWN CARE	PO0111087	F-1305A TREE REMOVAL/PURDUE	\$2,450.00

01-03107	CHEM-CAN SERVICES, INC.	PO0110713	F-1305A TOILET RENTAL 1/13	\$161.70
01-03608	GARFIELD PANEL & SUPPLY, INC.	PO0110986	F-1305A SLICER WHEEL	\$30.50
01-04033	DOLESE BROTHERS CO., INC.	PO0111009	F-1305A CONCRETE	\$236.00
01-05005	ENID CONCRETE CO., INC.	PO0110801	F-1305A CONCRETE	\$168.13
STORMWATER FUND TOTAL				\$6,274.97

FUND 44 DEPT 445 - WATER CAP. IMPROVEMENT FUND

01-01918	GUERNSEY	PO0095773	W-1004A WATER SOURCE EXPANSION	\$955.44
01-02066	PROFESSIONAL ENG. CONSULTANTS	PO0095521	W-1107A WATER PLANT RENOVATION	\$4,870.68
01-03531	CABBINESS ENGINEERING, LLC	PO0102791	W-1205A WTR LINE RELOCATION	\$1,000.00
01-03760	GARVER, LLC	PO0107892	W-0820B PROFESSIONAL SERVICES	\$37,934.90
01-03781	ARROWHEAD TURF	PO0108419	W-0906A SEEDING FOR WATERLINE	\$1,645.00
01-12007	LUCKINBILL, INC.	PO0098356	W-1105A VAN BUREN WATERLINE	\$17,775.66
01-19037	STANDARD TESTING & ENGINEERING	PO0108826	W-0821A PROFESSIONAL SERVICES	\$160.00
01-46530	OK DEPT OF ENVIRONMENTAL QUAL	PO0110990	W-1302A WATERLINE PERMIT FEE	\$5,736.00
WATER CAP. IMPROVEMENT FUND TOTA				\$70,077.68

FUND 50 DEPT 505 - 911

01-01783	JP MORGAN CHASE	PO0111074	CHASE PAYMENT	\$81.70
01-20108	TOTAL COM, INC.	PO0110637	RADIO MAINTENANCE	\$11,000.00
911 TOTAL				\$11,081.70

FUND 51 DEPT 515 - POLICE

01-01338	J & P SUPPLY, INC.	PO0111081	AIR FRESHENER/TISSUE	\$211.67
01-01472	STAPLES ADVANTAGE	PO0110957	INK/FILE POCKET/LABELS	\$212.04
01-01472	STAPLES ADVANTAGE	PO0110991	LABELS/DVD/FILE FOLDERS	\$215.26
01-01783	JP MORGAN CHASE	PO0111074	CHASE PAYMENT	\$5,353.65
01-01988	BOARD OF TESTS FOR ALCOHOL/DRUG IN	PO0111052	BREATHALYZER TESTING	\$540.00
01-02364	NORTHWEST OK FIRE & SEC.	PO0111062	SYSTEM SERVICE CALL	\$287.20
01-03000	CARTER PAINT CO.	PO0110793	V2002 PAINT/ACTICATOR	\$126.35
01-03053	NORTHWEST SHREDDERS, LLC	PO0110735	SECURITY CONSOLE	\$100.00
01-03214	DOYLE, TIMOTHY	PO0111023	TUITION REIMBURSEMENT	\$505.50
01-03436	OK POLICE CHIEFS TRAINING FOUNDATI	PO0111056	NEW HIRE TESTING	\$25.00
01-03712	THE FEED BARN	PO0111060	DOG/CAT FOOD	\$379.70
01-03888	PRITCHETT, BRAD	PO0110677	WC/MEDICAL PPI	\$323.00
01-03888	PRITCHETT, BRAD	PO0110832	WC/MEDICAL PPI	\$323.00
01-03888	PRITCHETT, BRAD	PO0110980	WC/MEDICAL PPI	\$323.00
01-03896	HUGHES, KENYON	PO0110850	TUITION REIMBURSEMENT	\$1,000.00
01-05067	ENID GLASSWORKS, INC.	PO0110692	V408 WINDSHIELD	\$215.00
01-05067	ENID GLASSWORKS, INC.	PO0110969	V2046 WINDSHIELD	\$200.00
01-05134	ENID NEWS & EAGLE	PO0111080	PUBLICATIONS	\$24.35
01-13089	MERRIFIELD OFFICE SUPPLY	PO0111082	LABELS/PAPER/STAMP	\$288.43
01-13145	MID-AMERICA WHOLESAL, INC.	PO0111057	BARREL SACKS	\$54.90
01-15004	OK EMPLOYMENT SECURITY COMMISSION	PO0110849	4TH QTR UNEMPLOYMENT TAX	\$4,172.00
01-15061	OK CORRECTIONAL INDUST.	PO0111051	UNIFORMS	\$58.50
01-16004	PDQ PRINTING	PO0111079	NOTE CARDS	\$80.00
01-16145	PETTY CASH	PO0111036	REIMB/FILING FEES/A MORRIS	\$10.00
01-19044	SCHEFFE PRESCRIPTION SHOPS, INC.	PO0111050	MEDS/INMATES	\$151.79
01-19165	STEVENS FORD, INC.	PO0110787	V26 ALIGNMENT	\$1,298.16
01-20048	T-SHIRT STORE, INC.	PO0111049	LOGO SHIRTS (15)	\$327.11
01-20108	TOTAL COM, INC.	PO0111055	RADIO/REPAIR	\$70.50
01-24000	XEROX CORPORATION, INC.	PO0111059	COPIER USAGE 9/12-1/13	\$417.47
01-30420	OLSON ANIMAL HOSPITAL, INC.	PO0110860	REIMB/VACCINES	\$180.00
01-46560	GROOM CLOSET	PO0111053	DOG FOOD	\$177.60
01-50210	LOWE'S HOME CENTERS, INC.	PO0111119	OUTLET/PLATE/FLOURESCENT	\$14.92
01-53300	ANIMAL CARE OF ENID, INC.	PO0110815	REIMB/VACCINES	\$430.00
01-55120	QUILL CORPORATION, INC.	PO0110773	CALENDARS	\$451.09
01-65460	ACTSHON PEST CONTROL	PO0111048	EXTERMINATING SERVICE 1/13	\$40.00
01-69060	C T C JANITORIAL, INC.	PO0111054	CLEANER	\$49.80
01-70950	COPIERS PLUS, INC.	PO0111061	COPIER USAGE 12/12-1/13	\$258.46

01-80020	GARFIELD COUNTY HEALTH DEPT.	PO0110942	HEP B VACCINES	\$165.00
			POLICE TOTAL	\$19,060.45

FUND 60 DEPT 605 - CONFERENCE CENTER

01-02364	NORTHWEST OK FIRE & SEC.	PO0110903	2013 MONITORING SERVICES	\$300.00
01-03789	BEST BUY FOR BUSINESS	PO0108434	M-1109H DIGITAL SIGNAGE	\$18.05
01-03892	AMERICANFLAGS.COM	PO0110752	M-1109I OKLA STATE FLAG	\$1,347.00
01-05134	ENID NEWS & EAGLE	PO0111086	PUBLICATIONS	\$113.95
01-13089	MERRIFIELD OFFICE SUPPLY	PO0110763	M-1109I FILE CABINETS/BOOKCASE	\$1,421.00
01-15125	OK GAS & ELECTRIC	PO0110764	MONTHLY SERVICE 12/12	\$9,348.05
01-80045	CHISHOLM TRAIL EXPO CENTER	PO0111111	HOTEL TAX 12/12	\$48,305.47
01-80284	TRANE PARTS CENTER (THE)	PO0110856	REFRIGERATION DUAL CIRCUIT	\$252.76
			CONFERENCE CENTER TOTAL	\$61,106.28

FUND 65 DEPT 655 - FIRE

01-00957	NAFECO	PO0110881	COAT REPAIR	\$40.25
01-01008	CED FT WORTH CREDIT	PO0110871	WIRING/CONNECTORS	\$437.93
01-01227	AUTRY VO-TECH CENTER	PO0110878	TUITION ASSISTANCE/J LONG	\$900.00
01-01579	RADIOLOGY ASSOCIATES 1 LLC	PO0110864	WC/MEDICAL	\$28.66
01-01647	BASS BAPTIST HEALTH CENTER	PO0110863	WC/MEDICAL	\$873.06
01-01647	BASS BAPTIST HEALTH CENTER	PO0110865	WC/MEDICAL	\$343.27
01-01685	STEVENS REF & HTG, INC.	PO0110889	CAPACITOR/REPAIR/FREON	\$353.49
01-01783	JP MORGAN CHASE	PO0111074	CHASE PAYMENT	\$5,509.44
01-02017	A. W. BRUEGGEMANN CO., INC.	PO0110876	BITS/SCREWS	\$145.30
01-02053	BAKERS ALTERNATOR-STARTER, INC.	PO0110874	V1018 BATTERY	\$128.71
01-02418	PERFECTION EQUIPMENT	PO0110887	SWITCH	\$51.06
01-02603	FRASIER, FRASIER & HICKMAN, LLP	PO0110828	WC/ATTORNEY FEE	\$2,664.75
01-03099	CHIEF FIRE & SAFETY CO., INC.	PO0110932	FOG NOZZLES/HOSE	\$3,530.00
01-03109	CASCO INDUSTRIES, INC.	PO0110877	HOSE	\$115.00
01-03412	INTELLICORP RECORDS, INC.	PO0110879	VOLUNTEER BACKROUND CHECKS	\$14.95
01-03526	FAITH DECORATIVE LIGHTING, INC.	PO0110884	CHRISTMAS BLDG LIGHTS/LABOR	\$975.99
01-03879	CURRIER, JOHN	PO0110573	WC/MEDICAL	\$323.00
01-03879	CURRIER, JOHN	PO0110831	WC/MEDICAL	\$323.00
01-03887	CURRIER, JOHN	PO0110913	WC/MILEAGE	\$32.24
01-03887	CURRIER, JOHN	PO0110676	WC/MILEAGE	\$60.57
01-03897	MORGAN, NANCY	PO0110867	WC/MILEAGE	\$94.99
01-03897	MORGAN, NANCY	PO0110914	WC/MILEAGE	\$467.48
01-06019	FLAMING AUTO SUPPLY CO., INC.	PO0110875	FILTERS (7)	\$183.82
01-06019	FLAMING AUTO SUPPLY CO., INC.	PO0110875	V1025 OIL/AIR FILTER	\$72.17
01-13089	MERRIFIELD OFFICE SUPPLY	PO0110885	OFFICE CHAIRS (2)	\$500.00
01-15132	O'REILLY AUTO PARTS, INC.	PO0110873	HEAT SHRINK/PAINT	\$83.30
01-15132	O'REILLY AUTO PARTS, INC.	PO0110873	V1014 GASKET/ FUEL INJECTOR	\$164.87
01-16145	PETTY CASH	PO0111032	REIMB/MEAL/K MCCULLOUGH	\$11.68
01-16145	PETTY CASH	PO0111032	REIMB/MEAL/S BARTLEY	\$13.51
01-16145	PETTY CASH	PO0111032	REIMB/TRUCK TAGS	\$46.00
01-16145	PETTY CASH	PO0111043	REIMB/MEAL/C BAKER	\$18.00
01-20106	T & W TIRE, INC.	PO0110886	V1043 TIRE	\$626.43
01-20108	TOTAL COM, INC.	PO0110883	RECEIVER ALIGNMENT	\$255.00
01-20108	TOTAL COM, INC.	PO0108210	RADIO ROUTER/COMBINER	\$9,490.00
01-23012	WAYEST SAFETY, INC.	PO0110929	RETROFIT KIT/REGULATOR/VALVES	\$2,544.43
01-30830	LOCKE SUPPLY, INC.	PO0110880	BALLASTS/BULBS/SENSOR	\$393.39
01-46690	PUBLIC AGENCY TRAINING	PO0110888	FIRE SVC LEADERSHIP SEMINAR (2)	\$550.00
01-51190	JACK'S OUTDOOR POWER EQUIPMENT	PO0111126	DIESEL FUEL TREATMENT	\$61.92
01-55160	BOUND TREE MEDICAL, LLC	PO0110882	EARPLUGS/PENLIGHTS/BLANKETS	\$135.24
01-60380	MCBRIDE CLINIC INC	PO0110911	WC/MEDICAL	\$39.17
01-61070	PINNACLE NEURO CARE INC	PO0110866	WC/MEDICAL	\$2,175.37
01-80473	ACE HARDWARE-SOUTHERN HARDLINES	PO0110872	BATTERIES/FITTINGS/MARKERS	\$119.01
			FIRE TOTAL	\$34,896.45

FUND 82 DEPT 825 - CLEET

01-02587	OK BUREAU OF NARCOTICS	PO0110838	MONTHLY REIMB 12/12	\$5.00
----------	------------------------	-----------	---------------------	--------

01-03274	CLEET	PO0110837	MONTHLY REIMB 12/12	\$3,759.28
01-55470	OK STATE BUREAU INVEST	PO0110839	MONTHLY REIMB AFIS 12/12	\$2,075.26
01-55470	OK STATE BUREAU INVEST	PO0110839	MONTHLY REIMB FORENSIC 12/12	\$2,005.45
			CLEET TOTAL	\$7,844.99

FUND 99 DEPT 995 - EPTA

01-00793	OKLAHOMA OFFICE SYSTEMS, INC.	PO0110700	COPIER USAGE 12/12	\$55.00
01-01783	JP MORGAN CHASE	PO0111074	CHASE PAYMENT	\$814.73
01-02048	TMHC SERVICES, INC	PO0111100	EMPLOYEE TRAINING/J WEAVER	\$5.00
01-02594	PIONEER TELEPHONE-MAINE	PO0110698	MONTHLY SERVICE 12/12	\$24.44
01-03650	A BETTER SIGN COMPANY	PO0110699	SIGN INSTALLATION	\$235.94
01-16145	PETTY CASH	PO0111035	REIMB/FUEL/K WATKINS	\$30.22
01-19001	STANLEY'S WRECKER SERVICE	PO0110908	V8562 TOWING	\$144.90
01-19047	AT & T	PO0110964	MONTHLY SERVICE 1/13	\$136.52
01-19047	AT & T	PO0110992	MONTHLY SERVICE 1/13	\$134.72
01-31350	ADVANCED FIRE EQUIPMENT	PO0110907	F/E ANNUAL SERVICE 1/13	\$203.50
01-55120	QUILL CORPORATION, INC.	PO0110773	CALENDARS	\$21.56
01-55120	QUILL CORPORATION, INC.	PO0110776	INK CARTRIDGES	\$266.38
			EPTA TOTAL	\$2,072.91

FUND 70 DEPT 705 - CDBG

70-03501	JDC CONTRACTING	PO0109809	B-11(365)DEMO/1116 E OKLAHOMA	\$1,132.50
70-08060	HENSON CONSTRUCTION	PO0110844	B-12(371) JWL REIMBURSEMENT	\$11,582.00
70-49130	BOOKER-T WASHINGTON CENTER	PO0110784	B-12(373) BTW AFTER SCHOOL	\$850.16
			CDBG TOTAL	\$13,564.66

COMBINED BREAKDOWN OF TOTALS

EMA	\$208,199.15
EEDA	\$498,269.32
REMAINING FUNDS	\$1,402,425.38
TOTAL CLAIMS	\$2,108,893.85