

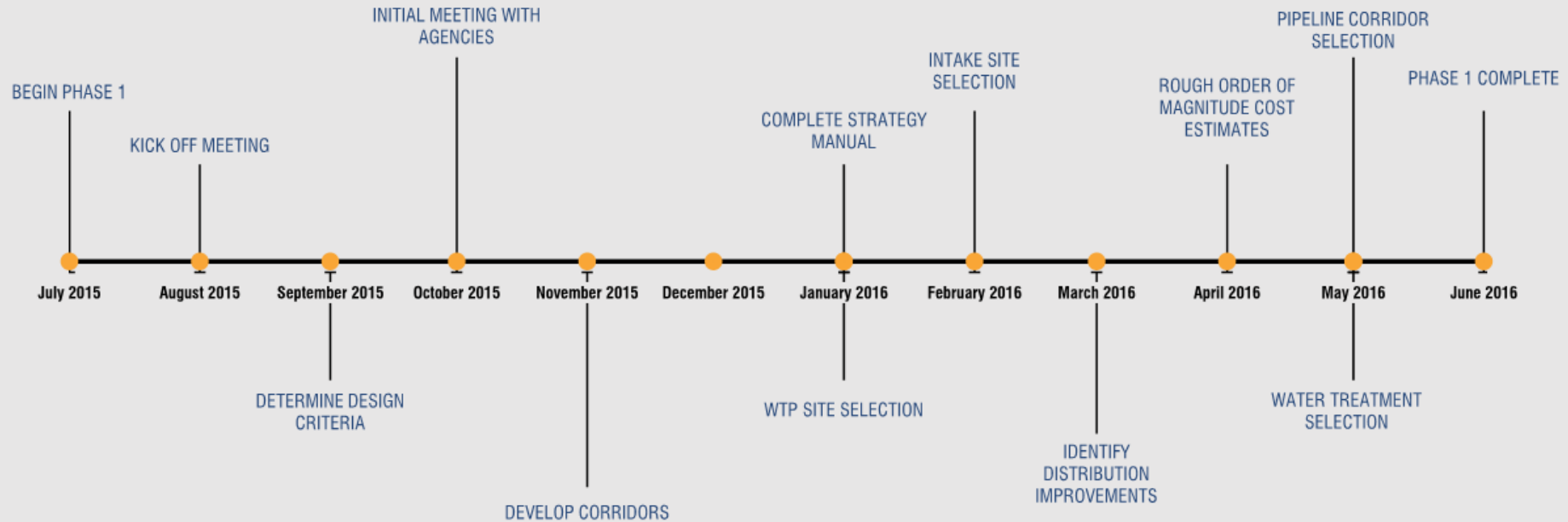
## Phase I Update



# Program Segments

- Program Management
- Intake/Pump Station
- Pipeline
- Terminal Storage Reservoir (TSR)
- Water Treatment Plant (WTP)
- Distribution
- Environmental

## TIMELINE



# Future Actions

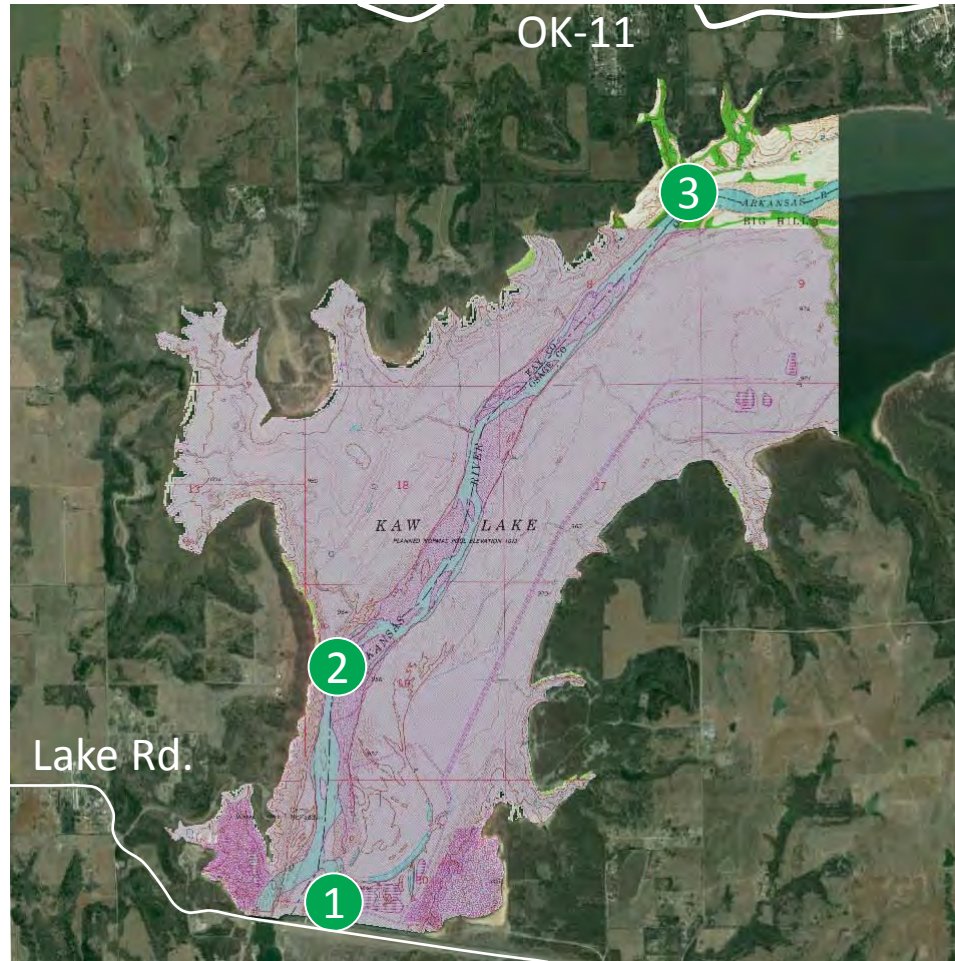
- Present intake site recommendation to Commission for consideration and action in February
- Present location of WTP to Commission for consideration and action in January
- Present general locations for TSR to Commission for consideration and action in January

- Intake Location Alternatives
  - 1 At-grade option
  - 3 In-lake options
- Types of Intake Pump Stations
  - 5 Types
- Path Forward

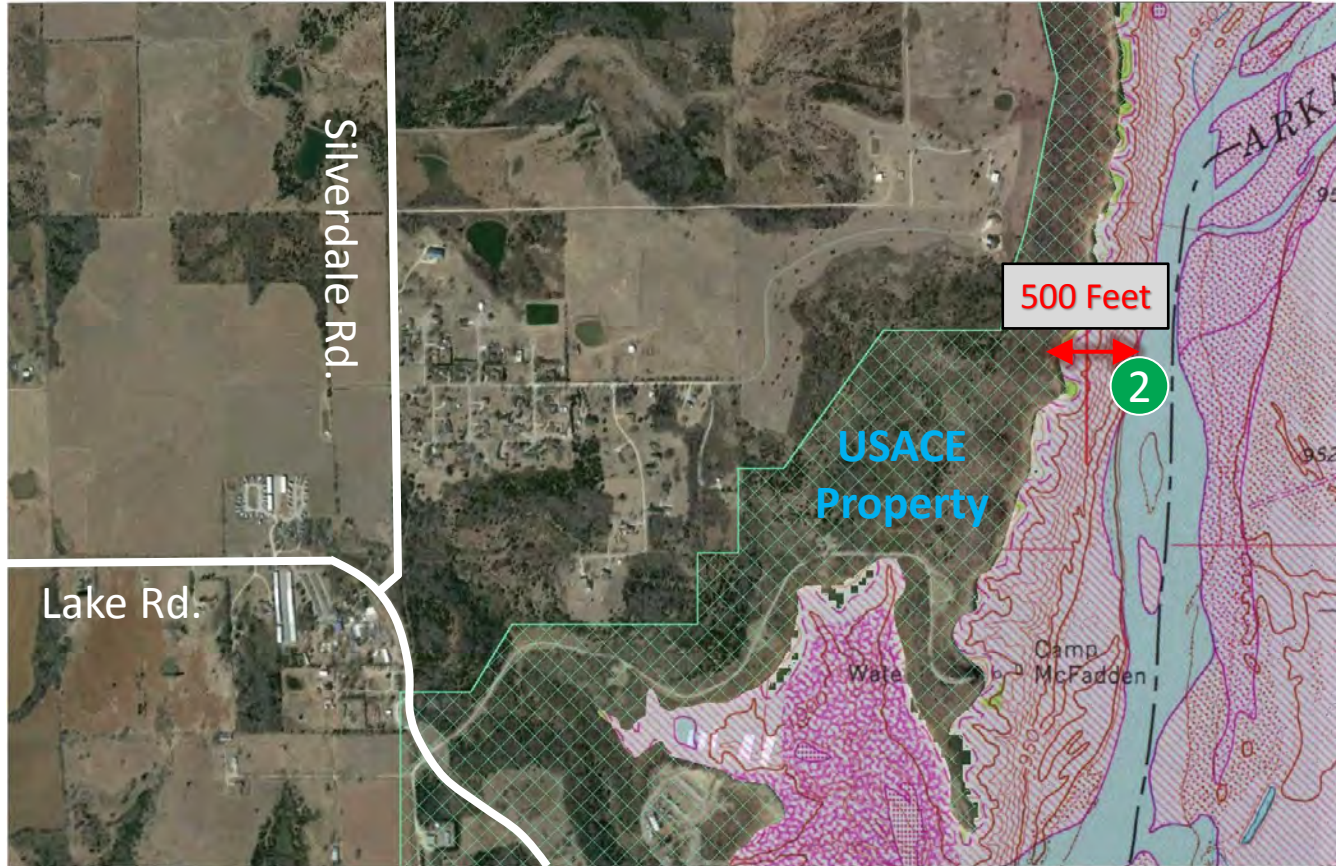
# At-Grade Alternative Enid Tee Pumping



# Intake Location Alternatives In-lake Pumping

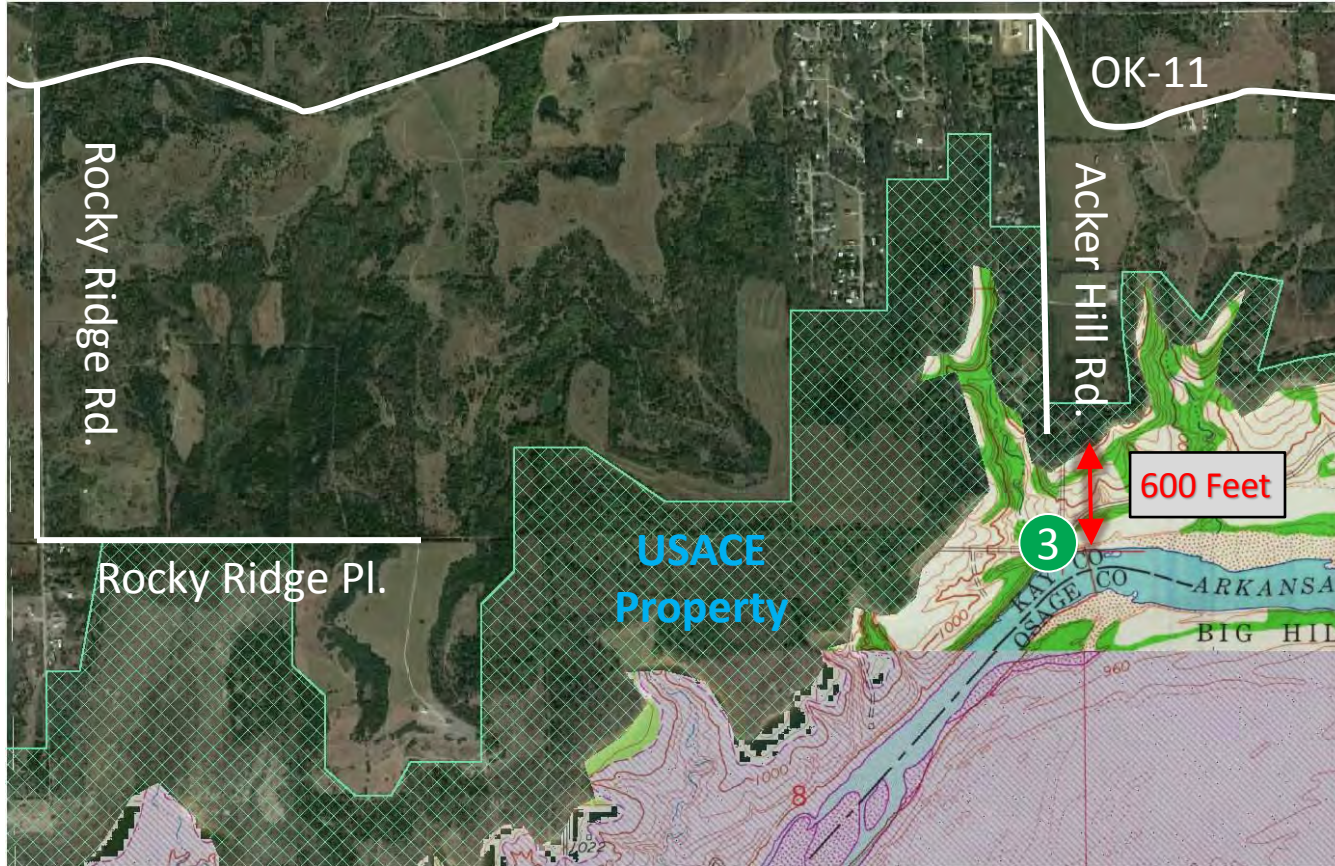


# Intake Location Alternatives - Site 2





# Intake Location Alternatives – Site 3

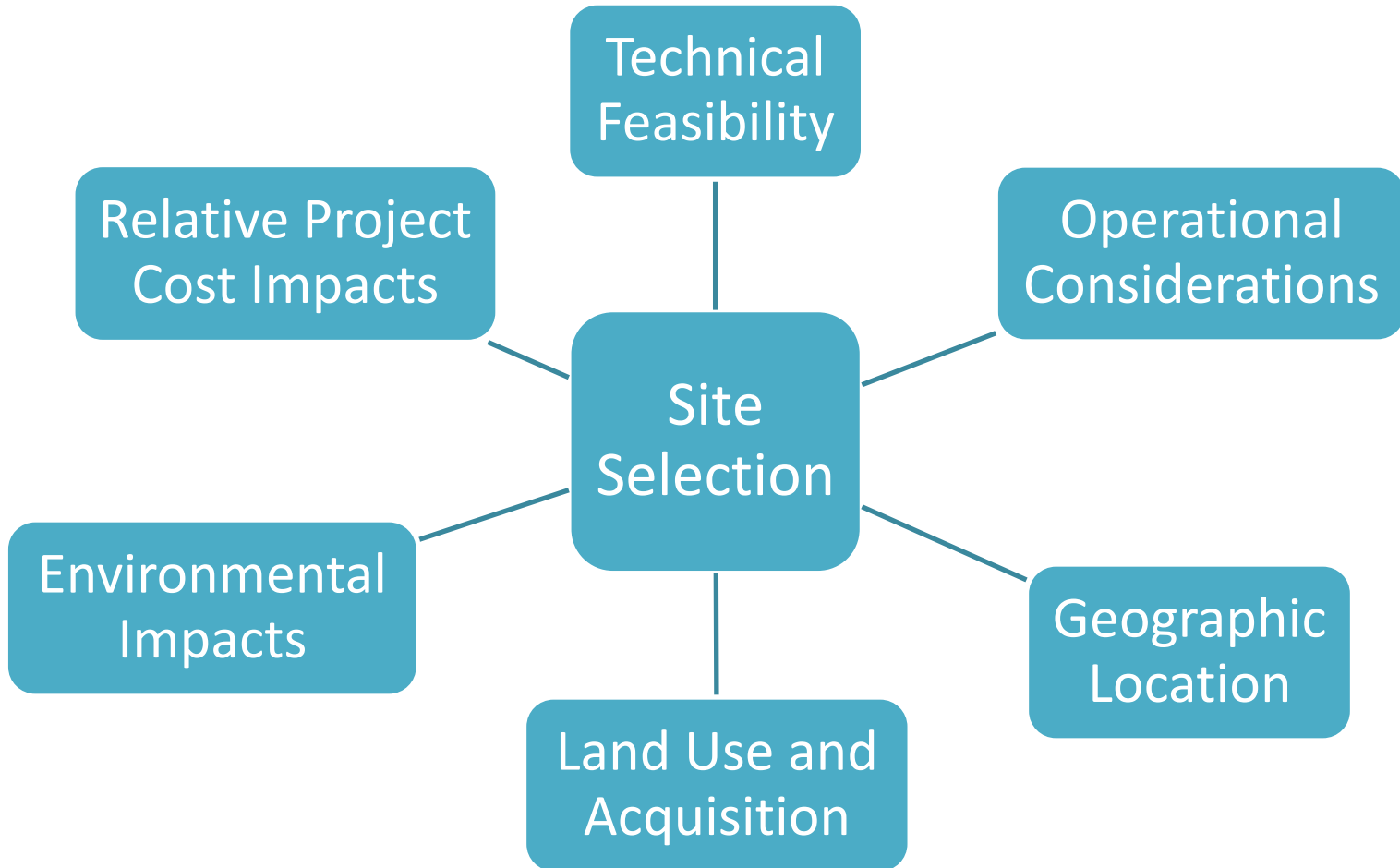


- Non-Monetary Evaluation Criteria
  1. Short-Term (Construction Phase) Impacts
  2. Long-Term (Post Construction Phase) Impacts
  3. Risk Potential
  4. Difficulty of Property Acquisition
  5. Difficulty of Permitting
  6. Water Quality

# Intake Path Forward

- Finalize rankings and site recommendation in early January.
- Present intake site recommendation to Commission for consideration and action in February.

# WTP Site Selection



# Conceptual Layout Example

## Recommended location



Note: Actual layout may vary significantly based on selected treatment processes

# WTP Path Forward

- Chestnut site is the recommended location for new WTP.
  - Located adjacent to existing WTP #2

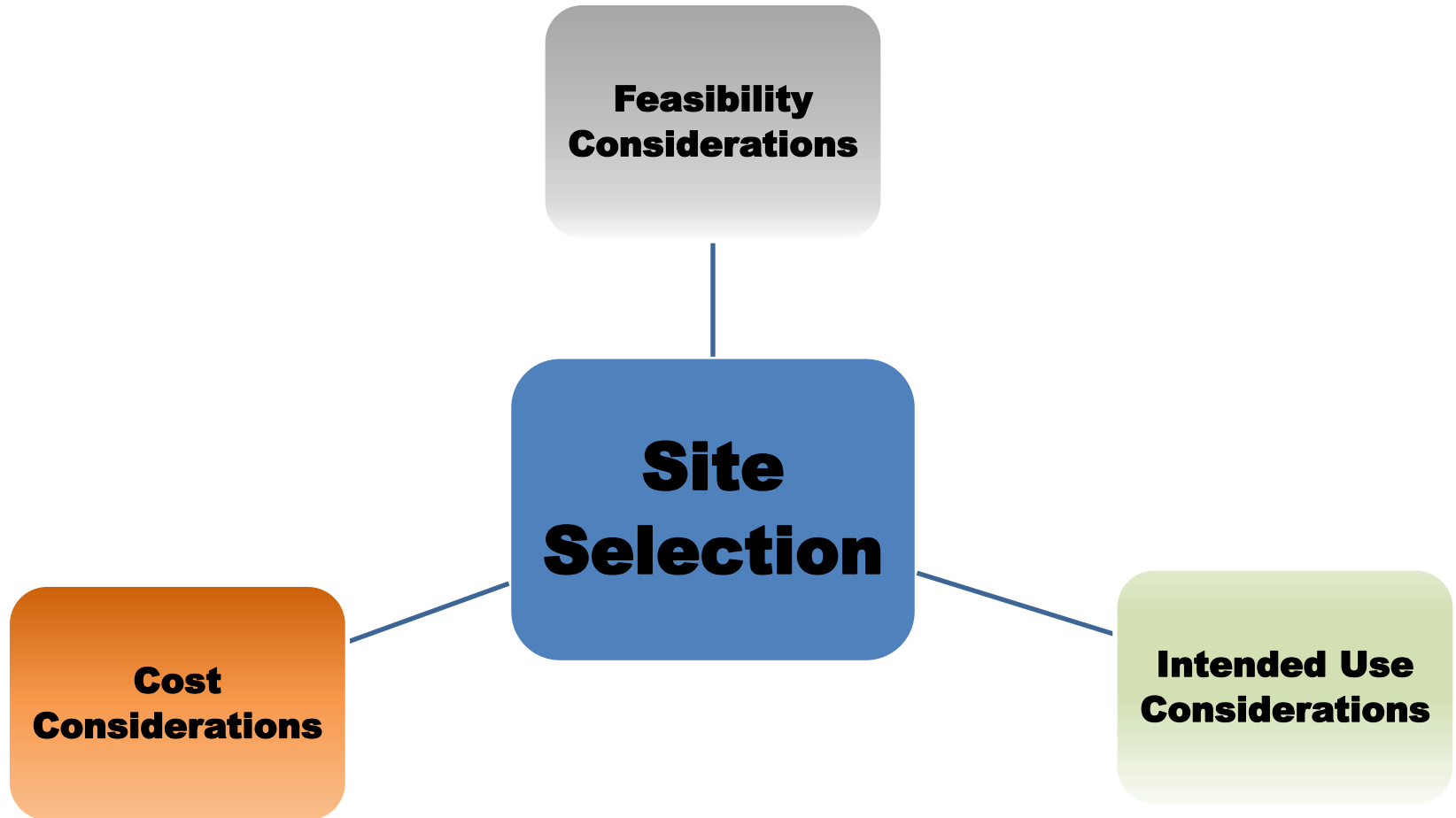
# Terminal Storage

## Equalization Storage (EQ Storage)



## Emergency Storage (EM Storage)

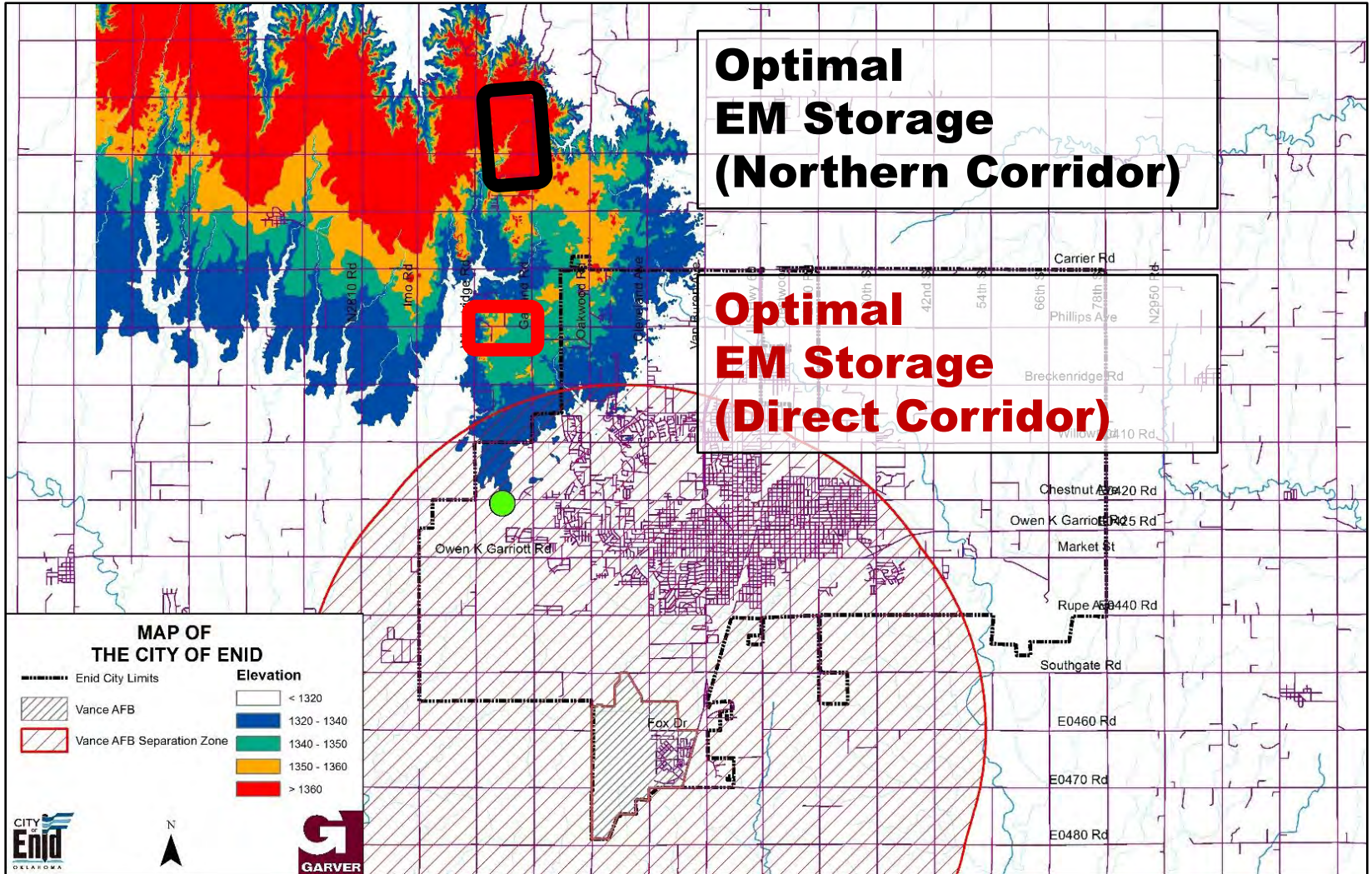






- Feasibility Considerations
  - Adequate site footprint
  - Environmental considerations
  - EM: outside 5 mile radius from Woodring Airport and Vance AFB
- Cost Considerations
  - Along raw waterline route
  - High elevation (relative to WTP location)
- Intended Use Considerations
  - EM: proximity to population base
  - EQ: consistent water quality and site security

# TSR Siting Results



# TSR Path Forward

- Recommend continued TSR/EM design with two optimized locations
  - Northern Corridor (black outline) site
  - Direct Corridor (red outline) site
- TSR/EQ location options
  - Adjacent to WTP
  - Adjacent to TSR/EM

# Summary

- Intake
  - Finalize rankings and site recommendation in early January.
  - Present site recommendation to Commission for consideration and action in February.
- WTP
  - Present Chestnut site recommendation to Commission for consideration and action in January.
- TSR
  - Present general location recommendations to Commission for consideration and action in January.

## Phase I Update

